

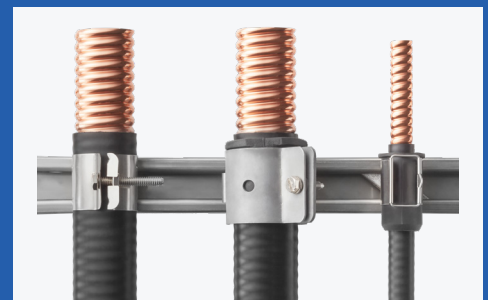


RFS Technologies
an Amphenol Company

WAVEGUIDE & ACCESSORIES

SELECTION GUIDE

Edition 1 rev. A | 10.2023



RFS TECHNOLOGIES, AN AMPHENOL COMPANY

TABLE OF CONTENTS

INTRODUCTION

FLEXWELL® Elliptical Waveguide

[portfolio overview](#)

1

ELLIPTICAL WAVEGUIDE

Specifications for the most reliable waveguides,
connectors and accessories [in the industry](#)

2

TWISTFLEX

A complete portfolio of EIA

[flexible waveguides](#) and IEC models on request

8

RECTANGULAR COMPONENTS

Rectangular waveguide components

[to make any connection, anywhere](#)

9

PRESSURIZATION PRODUCTS

Dehydrators to prevent moisture, condensation and
degradation in performance, and a vast array of
products for [installation,](#)

[operation and maintenance](#)

10

COMPLETE SOLUTIONS

Everything you need to [support your](#)
[complete waveguide systems](#)

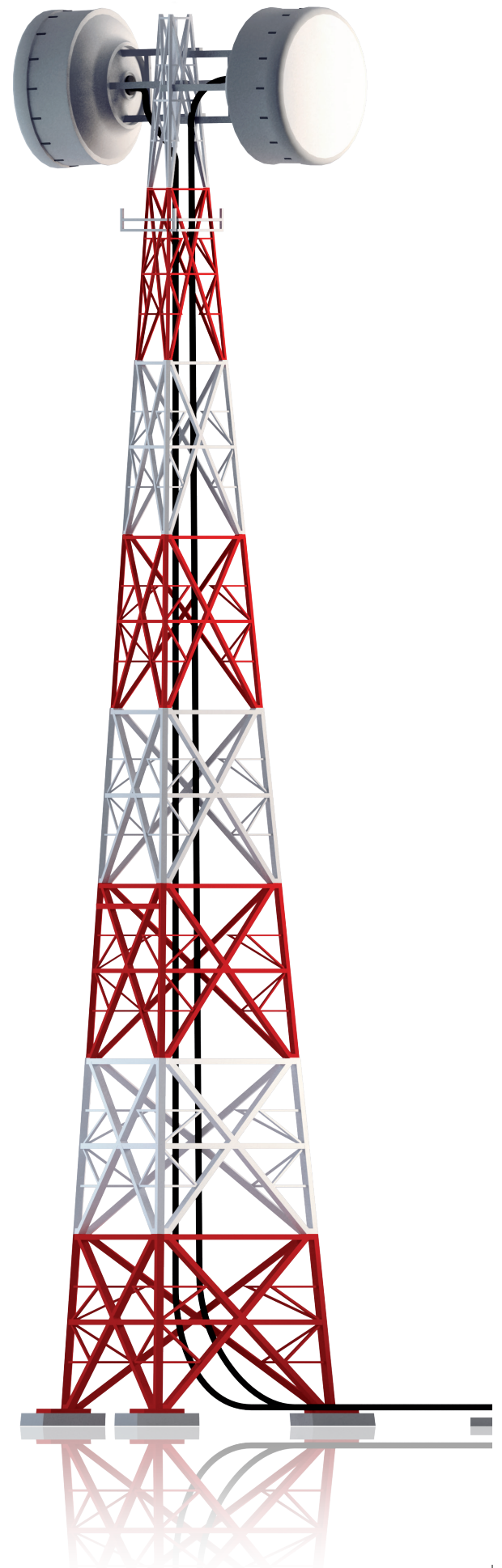
11

MODEL STRUCTURES

Understanding Waveguide and Twistflex

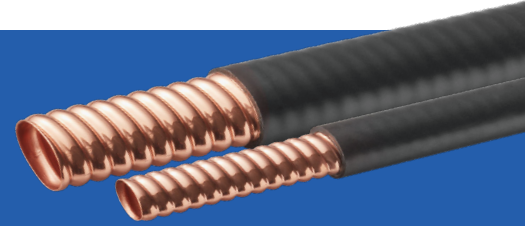
[model numbers](#)

12



RFS TECHNOLOGIES, AN AMPHENOL COMPANY OFFERS A COMPLETE PORTFOLIO OF THE **HIGHEST QUALITY & MOST RELIABLE WAVEGUIDES FOR NORTH AMERICA APPLICATIONS**

We provide trusted and reliable solutions for all long haul, mobile, satellite and radar application needs through its broad portfolio of high quality FLEXWELL® Elliptical Waveguides, Connectors, Components, Tools and Pressurization Products.



FLEXWELL® products have been used in thousands of successful installations worldwide. They are the highest quality, best performing, and most reliable elliptical waveguides in the industry.

For more than 50 years, FLEXWELL elliptical waveguides have successfully supplemented traditional rigid rectangular and circular waveguide configurations for the transmission of RF energy at microwave frequencies. Available in a wide variety of premium and standard models, FLEXWELL is constructed of longitudinally continuous seam welded, highly conductive copper tube, corrugated and precision formed into an elliptical cross section. It is manufactured in continuous lengths using a special seam welding process. With FLEXWELL, our customers benefit from:

- Portfolio of elliptical waveguides that cover the entire range of microwave frequencies
- Unique corrugation design for maximum strength and flexibility
- Excellent electrical performance
- Low attenuation and good return loss (VSWR as low as 1.06); highest average power
- 24 hour pressure test performed on every waveguide
- Reduced installation cost and time compared to using rigid rectangular waveguides
- Easy transportation in coils or on drums
- Training and superior technical support

Additionally, we offer a full range of options, connectors, pressurization equipment and accessories to support your end-to-end radio link network. RFS Technologies, Inc. offers tuneable connectors for premium performance waveguides and non-tuneable connectors for standard performance waveguides according to the EIA standard. These connectors are manufactured from brass forgings and are very simple and easy to install with basic hand tools, no expensive flanging tools are required. Our connectors based on the IEC standard are all fixed tuned. Together with the dedicated flanging tools and premium performance waveguides, these IEC connectors meet the highest VSWR / return loss requirements over the complete frequency band without tuning.

RFS Technologies offers the elliptical waveguides to cover 6, 7, 8 and 11GHz

Frequency			L6GHz		U6 GHz		7GHz		8 GHz				10 GHz		11 GHz
	5.6	5.85	5.9	5.925	6.4	6.425	7.1	7.125	7.75	8.5	10	10.2	10.3	10.5	11.7
Model Number	EP60					EP78					EP105				
	EP65														

Note: Each waveguide is available in standard and premium performance model. Specify the performance level (STD or PREM) when ordering

FLEXWELL ELLIPTICAL WAVEGUIDE

EP60 Series: 5.6-6.425 GHz



ORDERING INFORMATION | EIA: WR137 | IEC: R70

Maximum Frequency Band, GHz	Standard Waveguide Model Number	Premium Waveguide Model Number
4.50-6.425	EP60 (STD*)	EP60 (PREM*) / EP60JFN**

*Specify performance level when ordering **Flame and fire retardant jacket option available upon demand

PRODUCT SPECIFICATIONS

GENERAL SPECIFICATIONS			
Dimensions over Jacket	mm, in	55 x 33	2.2 x 1.3
Weight	kg/m, lb/ft	1.1	0.74
Min. Bending Radii, without rebending E-Plane	mm, in	200	8
Min. Bending Radii, without rebending H-Plane	mm, in	550	22
Min. Bending Radii, with rebending E-Plane	mm, in	300	12
Min. Bending Radii, with rebending H-Plane	mm, in	800	31
Jacket Type	J JFN	PE, Black	PE, Flame Retardant, Black
Max. Twist	degree, m, ft	4	1.2
Max. Operating Pressure	bar, psi	0.5	7
Max. Pulling Length per Hoisting Grip	m, ft	100	305
Standard Hanger Spacing	m, ft	0.9	3

TEMPERATURE SPECIFICATIONS			
Installation	°C, °F	-40 to 60	-40 to 140
Storage	°C, °F	-70 to 85	-94 to 185
Operation	°C, °F	-50 to 85	-58 to 185

ELECTRICAL SPECIFICATIONS			
		EP60 PREM	EP60 STD
Operating Frequency Band	GHz	5.6-6.425	
Low Band Attenuation	dB/100m, dB/100ft	4.15, 1.26	
Mid Band Attenuation	dB/100m, dB/100ft	3.95, 1.2	
High Band Attenuation	dB/100m, dB/100ft	3.8, 1.16	
Max. VSWR / Return Loss	- / dB	1.062 / 30.5	1.15 / 23.1

ACCESSORIES

EIA Accessories

Model Number	Description
C137-060FG	Connector EP60 CPR 137G fix-tunned
C137-060TG	Connector EP60 CPR 137G tunable
G343-060FG	Connector EP60 UG-343/344U fix-tunned
C137-060TG-PRETUNED	Connector EP60 CPR 137G pre-tuned
PW-C137	Pressure window CPR 137G, brass
PW-G137	Pressure window UG-343/344U, brass

Standard Accessories

Model Number	Description
CLAMP-060	Clamp EP60, bolt -on
ANGLE-UI	Universal angle adaptor, stainless steel, kit of 10
GKIT-24-060	Grounding kit EP60, 6AWG grounding wire 24"
GKIT-60-060	Grounding kit EP60, 6AWG grounding wire 60"
WFT-060	Single wall/roof feed through system EP60
FTP4-2X2*	4 cable (2x2) wall feed through panel
BOOT4-060	Boot EP60 for FTP4-xx
HOIST1-158L	Hoisting grip, open, E58, E60, E65

*FTP for other cable amount is available

IEC Accessories

Model Number	Description
D70-060FP-W	Connector 154 IEC-PDR 70 (5.6-6.425 GHz)
PW070-V-1	Pressure window, light type, UDR 70, brass
SHIM070-D-1	Shim for PDR 70, copper beryllium
FDIE-U060	Flanging die for basic tool FTOOL-U038130
FTOOL-U038130	Basic Flanging Tool for E38 to E130 waveguide
P2000-001	Tube of Plast 2000 20ccm

Premium Accessories

Model Number	Description
CLAMP-R-060	Universal clamp with clamp lining EP60
GKIT-24-060P	Grounding kit, Grounding wire 7AWG (16 mm²) 24"

FLEXWELL ELLIPTICAL WAVEGUIDE

EP65 Series: 5.9-7.125 GHz



ORDERING INFORMATION | IEC: R70 | EIA: WR137

Maximum Frequency Band, GHz	Standard Waveguide Model Number	Premium Waveguide Model Number
5.00-7.125	EP65 (STD*)	EP65 (PREM*) / EP65JFN**

*Specify performance level when ordering **Flame and fire retardant jacket option available upon demand

PRODUCT SPECIFICATIONS

GENERAL SPECIFICATIONS			
Dimensions over Jacket	mm, in	51 x 30	2.0 x 1.2
Weight	kg/m, lb/ft	0.75	0.5
Min. Bending Radii, without rebending E-Plane	mm, in	200	8
Min. Bending Radii, without rebending H-Plane	mm, in	500	20
Min. Bending Radii, with rebending E-Plane	mm, in	300	12
Min. Bending Radii, with rebending H-Plane	mm, in	600	24
Jacket Type	J JFN	PE, Black PE, Flame Retardant, Black	
Max. Twist	degree, m, ft	5	1.5
Max. Operating Pressure	bar, psi	0.5	7
Max. Pulling Length per Hoisting Grip	m, ft	100	305
Standard Hanger Spacing	m, ft	0.9	3

TEMPERATURE SPECIFICATIONS			
Installation	°C, °F	-40 to 60	-40 to 140
Storage	°C, °F	-70 to 85	-94 to 185
Operation	°C, °F	-50 to 85	-58 to 185

ELECTRICAL SPECIFICATIONS			
		EP65 PREM	EP65 STD
Operating Frequency Band	GHz	5.9-7.125	
Low Band Attenuation	dB/100m, dB/100ft	4.9, 1.49	
Mid Band Attenuation	dB/100m, dB/100ft	4.5, 1.37	
High Band Attenuation	dB/100m, dB/100ft	4.25, 1.3	
Max. VSWR / Return Loss	- / dB	1.062 / 30.5	1.15 / 23.1

ACCESSORIES

EIA Accessories

Model Number	Description
C137-065FG	Connector EP65 CPR 137G fix-tunned
C137-065TG	Connector EP65 CPR 137G tunable
G343-065EG	Connector EP65 UG-343/344U fix-tunned
G343-065TG	Connector EP65 UG-343/344U tunable
C137-065TG-PRETUNED	Connector EP60 CPR 137G pre-tuned
PW-C137	Pressure window CPR 137G, brass
PW-G137	Pressure window UG-343/344/U, brass

IEC Accessories

Model Number	Description
D70-065FG	Connector 154 IEC-PDR 70 (5.9-7.15 GHz)
PW070-V-1	Pressure window, light, type, UDR 70, brass
SHIM070-D-1	SHIM R 70 for PDR 70, copper beryllium
FDIE-U065	Flanging die for basic tool FTOOL-U038130
FTOOL-U038130	Basic Flanging Tool for E38 to E130 waveguide

Standard Accessories

Model Number	Description
CLAMP-114	Clamp EP65, bolt -on
ANGLE-UI	Universal angle adaptor, stainless steel, kit of 10
GKIT-24-065	Grounding kit EP65, 6AWG grounding wire 24"
GKIT-60-065	Grounding kit EP65, 6AWG grounding wire 60"
WFT-065	Single wall/roof feed through system EP65
FTP4-2X2*	4 cable (2x2) wall feed through panel
BOOT4-065	Boot EP65 for FTP4-xx
HOIST1-158L	Hoisting grip, open, E58, E60, E65

Premium Accessories

Model Number	Description
GKIT-24-065P	Grounding kit, Grounding wire 7AWG (16 mm ²) 24"
CLAMP-R-065	Universal clamp with clamp lining

*FTP for other cable amount is available

FLEXWELL ELLIPTICAL WAVEGUIDE

EP78 Series: 7.1-8.5 GHz



ORDERING INFORMATION | EIA: WR137, WR112 | IEC: R70, R84

Maximum Frequency Band, GHz	Standard Waveguide Model Number	Premium Waveguide Model Number
5.90-8.50	EP78 (STD*)	EP78 (PREM*) / EP78JFN**

PRODUCT SPECIFICATIONS

*Specify performance level when ordering **Flame and fire retardant jacket option available upon demand

GENERAL SPECIFICATIONS			
Dimensions over Jacket	mm, in	44 x 26	1.7 x 1.0
Weight	kg/m, lb/ft	0.6	0.4
Min. Bending Radii, without rebending E-Plane	mm, in	200	8
Min. Bending Radii, without rebending H-Plane	mm, in	500	20
Min. Bending Radii, with rebending E-Plane	mm, in	250	10
Min. Bending Radii, with rebending H-Plane	mm, in	600	24
Jacket Type	J JFN	PE, Black PE, Flame Retardant, Black	
Max. Twist	degree, m, ft	5	1.5
Max. Operating Pressure	bar, psi	0.5	7
Max. Pulling Length per Hoisting Grip	m, ft	100	305
Standard Hanger Spacing	m, ft	0.9	3

TEMPERATURE SPECIFICATIONS			
Installation	°C, °F	-40 to 60	-40 to 140
Storage	°C, °F	-70 to 85	-94 to 185
Operation	°C, °F	-50 to 85	-58 to 185

ELECTRICAL SPECIFICATIONS			
		EP78 PREM	EP78 STD
Operating Frequency Band	GHz	7.1-8.5	
Low Band Attenuation	dB/100m, dB/100ft	6.2, 1.89	
Mid Band Attenuation	dB/100m, dB/100ft	5.8, 1.77	
High Band Attenuation	dB/100m, dB/100ft	5.6, 1.71	
Max. VSWR / Return Loss	- / dB	1.062 / 30.5	1.15 / 23.1

ACCESSORIES

EIA Accessories

Model Number	Description
C137-078FG	Connector CPR 137G 7.125 – 7.75GHz fix-tuned
C137-078TG	Connector CPR 137G 7.125 – 7.75GHz tunable
C112-078FG	Connector CPR 112G 7.125 – 8.5GHz fix-tuned
C112-078TG	Connector CPR 112G 7.125 – 8.5GHz tunable
C112-078TG-PRETUNED	Connector CPR 112G 7.125 – 8.5GHz pre-tuned
G51-078FG	Connector UG-51/52/U 7.125 – 8.5GHz fix-tuned
G51-078TG	Connector UG-51/52/U 7.125 – 8.5GHz tunable
PW-C137	Pressure window CPR 137G, brass
PW-C112	Pressure window CPR 112G, brass
PW-G112	Pressure window UG-51/52/U, brass

Standard Accessories

Model Number	Description
CLAMP-078	Clamp EP78, bolt -on
ANGLE-UI	Universal angle adaptor, stainless steel, kit of 10
GKIT-24-078	Grounding kit EP78, 6AWG grounding wire 24"
GKIT-60-078	Grounding kit EP78, 6AWG grounding wire 60"
WFT-078	Single wall/roof feed through system EP78
FTP4-2X2*	4 cable (2x2) wall feed through panel
BOOT4-078	Boot EP78 for FTP4-xx
HOIST1-114L	Hoisting grip, open, EP70, EP78

IEC Accessories

Model Number	Description
D70-078FG	Connector 154 IEC-PDR 70 (7.1 - 8.5 GHz)
D84-078FG	Connector 154 IEC-PDR 84 (7.1 - 8.5 GHz)
B84-078FG	Connector 154 IEC-PBR 84 (7.1-8.5 GHz)
PW070-V-1	Pressure window, light type, UDR 70, brass
PW084-V-1	Pressure window, light type, UDR 84, brass
PW084-W-1	Pressure window, light type, UBR 84, brass
SHIM070-D-1	Shim for PDR 70, copper beryllium
SHIM084-D-1	Shim for PDR 84, copper beryllium
SHIM084-B-1	Shim for PBR 84, copper beryllium
FDIE-U078	Flanging die for basic tool FTOOL-U038130
FTOOL-U038130	Basic Flanging Tool for E38 to E130 waveguide

Standard Accessories

Model Number	Description
BOOT4-078	Boot EP78 for FTP4-xx
HOIST1-114L	Hoisting grip, open, EP70, EP78

Premium Accessories

Model Number	Description
CLAMP-R-078-E	Universal clamp with clamp lining EP78
GKIT-24-078P	Grounding kit, Grounding wire 7AWG (16 mm ²) 24"

*FTP for other cable amount is available

FLEXWELL ELLIPTICAL WAVEGUIDE

EP105 Series: 10.0-11.7 GHz



ORDERING INFORMATION | EIA: WR90 | IEC: R100

Maximum Frequency Band, GHz	Standard Waveguide Model Number	Premium Waveguide Model Number
8.10-11.70	EP105 (STD*)	EP105 (PERM*) / EP105JFN*

*Specify performance level when ordering **Flame and fire retardant jacket option available upon demand

PRODUCT SPECIFICATIONS

GENERAL SPECIFICATIONS			
Dimensions over Jacket	mm, in	33 x 20	1.3 x 0.8
Weight	kg/m, lb/ft	0.5	0.34
Min. Bending Radii, without rebending E-Plane	mm, in	130	5
Min. Bending Radii, without rebending H-Plane	mm, in	280	11
Min. Bending Radii, with rebending E-Plane	mm, in	150	6
Min. Bending Radii, with rebending H-Plane	mm, in	300	12
Jacket Type	J	PE, Black	
Max. Twist	degree, m, ft	6	1.8
Max. Operating Pressure	bar, psi	0.5	7
Max. Pulling Length per Hoisting Grip	m, ft	100	305
Standard Hanger Spacing	m, ft	0.6	2

TEMPERATURE SPECIFICATIONS			
Installation	°C, °F	-40 to 60	-40 to 140
Storage	°C, °F	-70 to 85	-94 to 185
Operation	°C, °F	-50 to 85	-58 to 185

ELECTRICAL SPECIFICATIONS			
		EP105 PREM	EP105 STD
Operating Frequency Band	GHz	10.0 - 11.7	
Low Band Attenuation	dB/100m, dB/100ft	9.4, 2.87	
Mid Band Attenuation	dB/100m, dB/100ft	9.1, 2.77	
High Band Attenuation	dB/100m, dB/100ft	8.9, 2.71	
Max. VSWR / Return Loss	- / dB	1.062 / 30.5	1.15 / 23.1

ACCESSORIES

EIA Accessories

Model Number	Description
C90-105FG	Connector CPR 90G (10.5-11.7 GHz) fix-tunned
C90-105TG	Connector CPR 90G (10.5-11.7 GHz) tunable
C90-105TG-PRETUNED	Connector CPR 90G (10.5-11.7 GHz) pre-tuned
PW-C090	Pressure window CPR 90G, brass

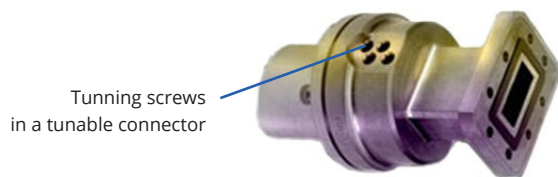
Standard Accessories

Model Number	Description
CLAMP-105	Clamp EP105, bolt -on
ANGLE-UI	Universal angle adaptor, stainless steel, kit of 10
GKIT-24-105	Grounding kit EP105, 6AWG grounding wire 24"
GKIT-60-105	Grounding kit EP105, 6AWG grounding wire 60"
WFT-105	Single wall/roof feed through system EP105
FTP4-2X2*	4 cable (2x2) wall feed through panel
BOOT4-105	Boot EP105 for FTP4-xx
HOIST1-78L	Hoisting grip, open, EP100, EP105

*FTP for other cable amount is available

Tunable and Pre-Tuned Connectors

A tunable waveguide connector, different than fix-tunned connector, can be adjusted or tuned in the field to achieve optimal electrical performance in operating frequency range. Tuning a waveguide connector involves adjusting the tuning screws in the connector. This process can be done in the field. Customers can also order new pre-tuned connectors from the factory which would save time and simplify installation.



TWISTFLEX SELECTION GUIDE



Twistflex is fabricated from spiral wound silver plated bronze strip. Twistflex is provided with EIA or IEC flanges. EIA twistflex includes mounting hardware for one flange. In twistflex with different flange on each end, hardware is supplied for both flanges. IEC twistflex includes gaskets and mounting hardware for both flanges. Standard lengths are 24" (60 cm), 36" (90 cm) and 48" (120 cm).

EIA TWISTFLEX ORDERING INFORMATION

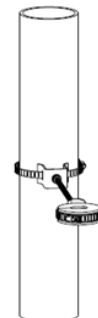
Frequency	Model Number	Flange 1	Flange 2	Length
5.85 - 8.2 GHz	TF137-CC1-012I	CPR137G	CPR137G	12 inch
	TF137-CC1-024I	CPR137G	CPR137G	24 inch
	TF137-CC1-036I	CPR137G	CPR137G	36 inch
	TF137-CC1-048I	CPR137G	CPR137G	48 inch
	TF137-CC1-060I	CPR137G	CPR137G	60 inch
7.05 - 10.0 GHz	TF112-CC1-012I	CPR112G	CPR112G	12 inch
	TF112-CC1-024I	CPR112G	CPR112G	24 inch
	TF112-CC1-036I	CPR112G	CPR112G	36 inch
	TF112-CC1-048I	CPR112G	CPR112G	48 inch
8.2 - 12.4 GHz	TF090-CC1-012I	CPR090G	CPR090G	12 inch
	TF090-CC1-024I	CPR090G	CPR090G	24 inch
	TF090-CC1-036I	CPR090G	CPR090G	36 inch
	TF090-CC1-048I	CPR090G	CPR090G	48 inch

Note: Contact RFS Technologies for other lengths or flange combinations.

ACCESSORIES

EIA Accessories

Model Number	Description
916933	Twistflex hanger assembly WR137
916932	Twistflex hanger assembly WR112
916705	Twistflex hanger assembly WR090



Twistflex hanger assembly includes a twistflex clamp with cushion, a 12 inch threaded rod, and hardware to attach it to the round member of the tower.

RECTANGULAR COMPONENTS SELECTION GUIDE



During site renovations, it is not uncommon to come across a mixture of different connector types or sizes between the antenna and the transmitter. For these cases RFS Technologies offers a large variety of rectangular waveguide components like coaxial adaptors, straight sections and E- and H-Bends.

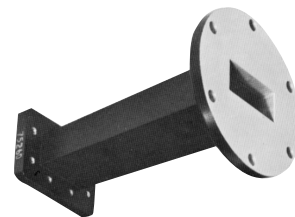
EIA RECTANGULAR COMPONENTS ORDERING INFORMATION

Frequency	Model Number	Flange 1	Flange 2 / Connector	Length	Description
5.85 - 8.2 GHz	NADP137-C-1-O	CPR137G	N Female Connector		Waveguide to Coax Adaptor
	HB070-CC-1-W-010M	CPR137G	CPR137G	4 inch	90 Degree H Bend
	EB070-CC-1-W-010M	CPR137G	CPR137G	4 inch	90 Degree E Bend
	SW070-CC-1-W-010M	CPR137G	CPR137G	4 inch	Straight Waveguide Section
	FADP-C137-M137	CPR137G	CMR137G	5 inch	Flange Adaptor
	TS137-CC-1-O-006I	CPR137G	CPR137G	6 inch	Waveguide Twist
	TRAN-C137-C112	CPR137G	CPR112G	12 inch	Waveguide Transition
7.05 - 10.0 GHz	NADP112-C-1-O	CPR112G	N Female Connector		Waveguide to Coax Adaptor
	SW112-CW-1-G-004I	CPR112G	UBR84	4 inch	Straight Waveguide Section
	FADP-C112-U112	CPR112G	UG51	5 inch	Flange Adaptor
	TRAN-C137-C112	CPR137G	CPR112G	12 inch	Waveguide Transition
8.2 - 12.4 GHz	NADP090-C-1-O	CPR090G	N Female Connector		Waveguide to Coax Adaptor
	HB090-CC	CPR090G	CPR090G	4 inch	90 Degree H Bend
	EB090-CC	CPR090G	CPR090G	4 inch	90 Degree E Bend
	FADP-C090-M090	CPR090G	CMR090G	5 inch	Flange Adaptor
	TS090-CC-1-O-006I	CPR090G	CPR090G	6 inch	Waveguide Twist

Note: Contact RFS Technologies for other lengths or flange combinations.



Waveguide to Coax Adaptor



Waveguide Transition or Flange Adaptor



Straight Waveguide Section



Waveguide Twist



H Bend and E Bend

PRESSURIZATION PRODUCTS COMPLETE END-TO-END SOLUTIONS

Including dehydrator to prevent moisture, condensation and degradation in performance, and a vast array of products for installation, operation, and maintenance.

RFS Technologies, Inc. provides full range of dehydrators and accessories with flow capacity to handle customer needs in various application including radar, microwave and broadcasting antennas and transmission lines.

BD Series dehydrators employ a fully digital operating platform offering the most accurate readings of operating variables, either from the front panel or by a remote IP connection.

BD Series consist of dehydrators with various flow capacities and necessary accessories for versatile mounting, easy connection to the waveguides, air cables and antennas, and maintaining high efficiency and reliability of the dehydrators.

RFS Technologies, Inc. offers all the necessary accessories with the dehydrator. Start-up kits and manifold kits include all air fittings and manifolds for interconnection of the dehydrator with pressurizable antennas, transmission lines and feeder systems. Installation kits provide versatile mounting options. Maintenance kits are recommended to ensure the highest level of reliability and lowest lifecycle cost of the dehydrators.

For more details and ordering information of the accessories, read [datasheet](#) or contact RFS Technologies

Pressurizable Systems



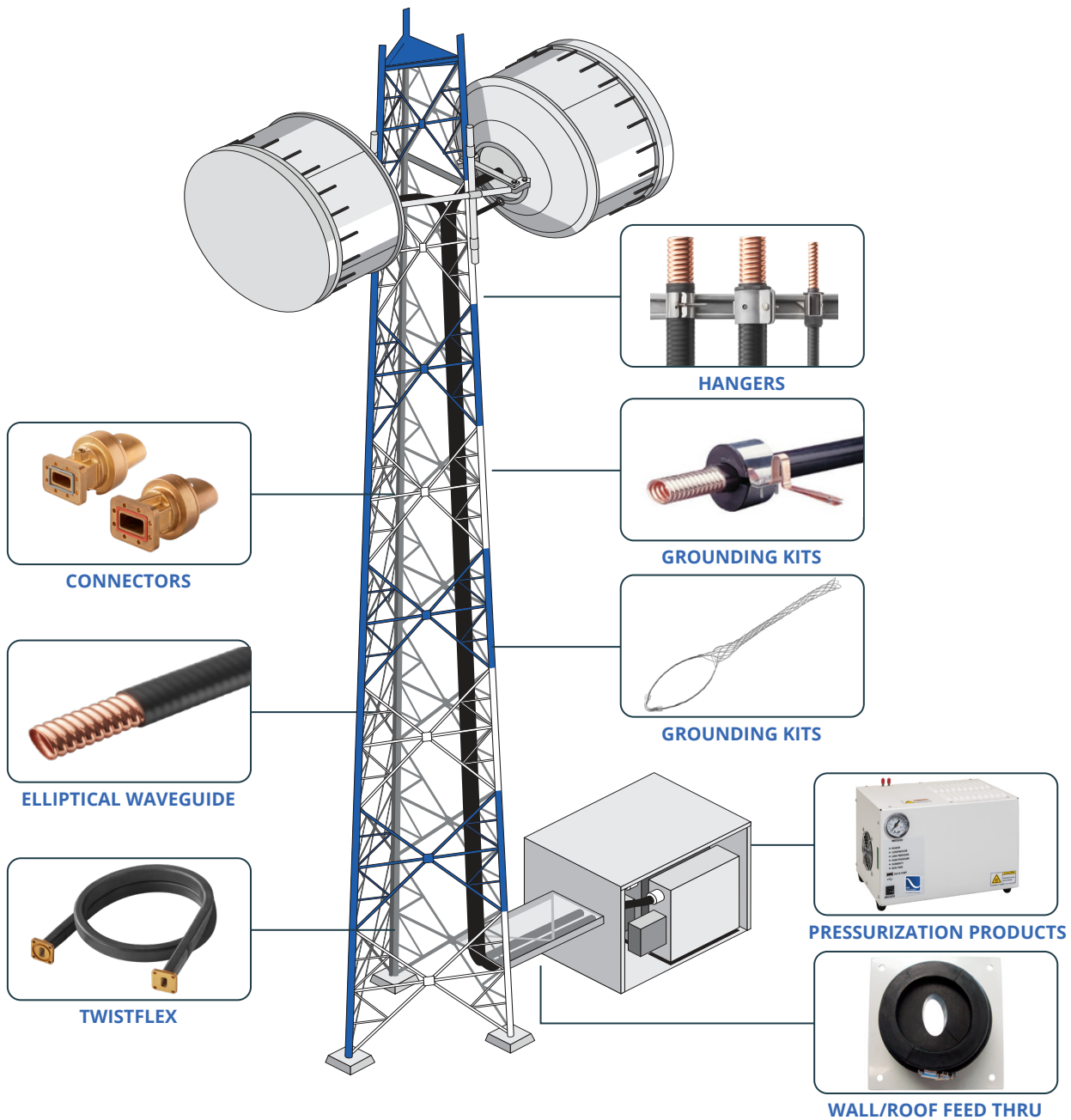
DEHYDRATOR ORDERING INFORMATION

SERIES NAME	APPLICATIONS	MODEL NAME	DESCRIPTION
BD210WLP	Telecom/Radar Waveguides and Antennas	BD210WLP	110-125VAC 50/60HZ DEHYDRATOR, 0.3-7.5 PSIG
		BD210WLP-V	110-125VAC 50/60HZ VERTICAL WALL MOUNTED DEHYDRATOR, 0.3-7.5 PSIG
BD550W	Telecom/Radar Waveguides and Antennas & Broadcasting Cables and Antennas	BD550W	110-125VAC 50/60HZ DEHYDRATOR, 2-15 PSIG
		BD550WLP	110-125VAC 50/60HZ LOW PRESSURE DEHYDRATOR, 0.3-7.5 PSIG
BD1500W		BD1500W	110-125VAC 50/60HZ DEHYDRATOR, 2-15 PSIG
		BD1500WLP	110-125VAC 50/60HZ LOW PRESSURE DEHYDRATOR, 0.3-7.5 PSIG
BD4200W	Broadcasting Site with Long and Multiple Cables and Antennas	BD4200W	110-125VAC 50/60HZ DEHYDRATOR, 5-20 PSIG
		BD4200WLP	110-125VAC 50/60HZ LOW PRESSURE DEHYDRATOR, 0.3-10 PSIG
BD8400W		BD8402W	208-253VAC 50/60HZ DEHYDRATOR, 0-15 PSIG

Note: 220V AC Vversion is available upon request

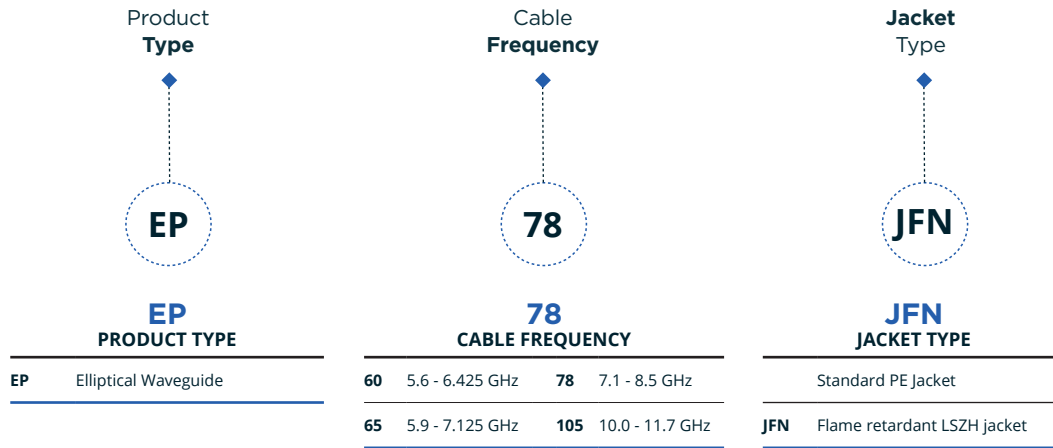
COMPLETE SOLUTIONS

RFS Technologies, Inc. offers a full range of waveguides, connectors, twistflex, pressurization equipment, to support your waveguide system.



UNDERSTANDING WAVEGUIDE MODEL NAMES

All **waveguide** model names are based on a naming structure that tells you:



All **twistflex** model names are based on a naming structure that tells you:



WAVEGUIDE QUICK SHIP PROGRAM

For more information please click [here](#) or call 203.630.3311 option #2

The waveguide quick ship program ships commonly used elliptical waveguides and related accessories in two (2) weeks from Meriden, Connecticut, USA.

WAVEGUIDE QUICK SHIP PROGRAM

To stay ahead of the competition, you need the power to accelerate site deployments. And you need a partner that can help you get the job done.

RFS Technologies is committed to powering your success. And we've launched our Waveguide Quick Ship program to help you achieve more and faster. With this program, waveguides and accessories are shipped from Meriden, Connecticut, USA, in two weeks from purchase order date.

EASY ORDERING IN A ONE-STOP SHOP

Additionally, RFS Technologies offers a full range of connectors, pressurization equipment, and accessories to support your end-to-end microwave waveguide network. We have included most-commonly used waveguides, connectors, and accessories in the Quick Ship program, which makes sure the whole package is shipped in two weeks after the order date. So, you can start site installation right after receiving these products.

We also offer technical support, field and classroom training, and BoM generation assistance.

FASTER ACCESS TO THE BEST ELLIPTICAL WAVEGUIDES IN THE INDUSTRY

RFS Technologies' elliptical waveguide products have been used in thousands of successful installations. They are the highest-quality, best-performing, and most reliable elliptical waveguides in the industry.

RFS Technologies has carefully chosen the most popular elliptical models. With streamlined manufacturing and expanded capacity, we can ship selected waveguides without compromising on testing, cutting, and re-reeling processes. You are guaranteed to receive products compliant with published specifications and your cut length requirements.



MAXIMUM ORDER QUANTITIES COVERED UNDER QUICK SHIP PROGRAM

	Unit	5/6 GHz System		6 GHz System		10/11 GHz System	
		Model Numbers	QTY	Model Numbers	QTY	Model Numbers	QTY
Elliptical Waveguide	ft	EP60	3000	EP65	5000	EP105	3000
Fixed Tuned Connector	pc	C137-060FG	20	C137-065FG	20	C90-105FG	20
Tunable Connector	pc	C137-060TG	20	C137-065TG	20	C90-105TG	20
Grounding Kit	pc	GKIT-60-060	60	GKIT-60-065	90	GKIT-60-105	60
Hanger Kit	Kit of 10pcs	CLAMP-060	100	CLAMP-114	150	CLAMP-105	100
Hoisting Grip	pc	HOIST1-158L	20	HOIST1-158L	30	HOIST1-78L	20
Angle Member Adapter Kit	Kit of 10pcs	ANGLE-CLPI	100	ANGLE-CLPI	150	ANGLE-CLPI	100
4" Boot	pc	BOOT4-060	20	BOOT4-065	30	BOOT4-105	20
Twistflex	pc	TF137-CC1-036I	20	TF137-CC1-036I	30	TF090-CC1-036I	20
Pressure Window	pc	PW-C137	20	PWC-137	20	PW-C090	20

- Note:
1. Specify waveguide performance (STD or PREM) on purchase order.
 2. Does not include connector assembly.
 3. Larger order quantities can be shipped within 4-6 weeks.

NOTES

NOTES



an Amphenol Company