



ORTRONICS

# HEALTHCARE GUIDE

 legrand®

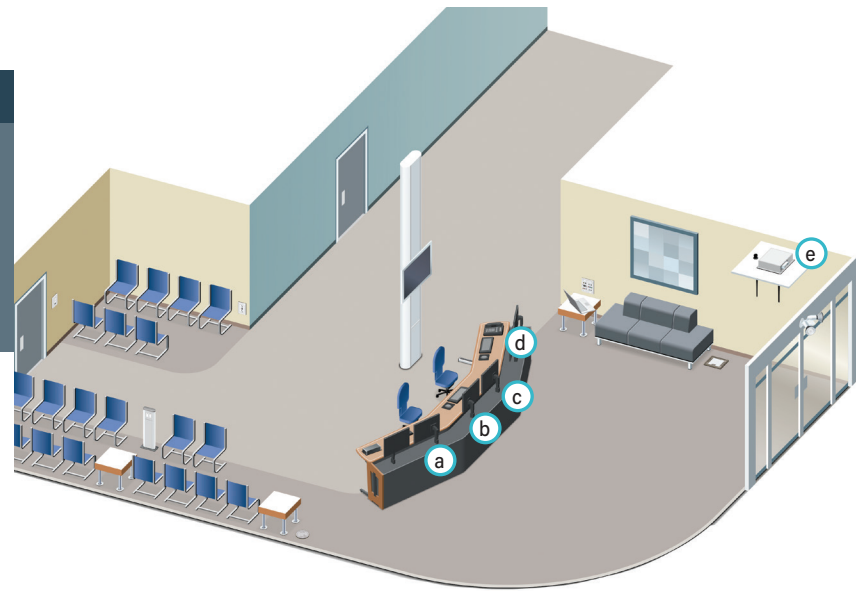


# Healthcare Solutions Model

In today's highly competitive healthcare environment, supporting patients and caregivers is the top priority. To help hospitals put patients first, Legrand ensures that your building is in the best shape it can be. Legrand provides a range of innovative flexible solutions designed to enable you to take better control of your operating costs. Legrand also offers many ways that reduce energy consumption, and also has many products that let you manage moves, adds and changes so that you can adapt to new technology. These solutions create a stronger and healthier infrastructure that will help physicians to deliver better care to your patients.

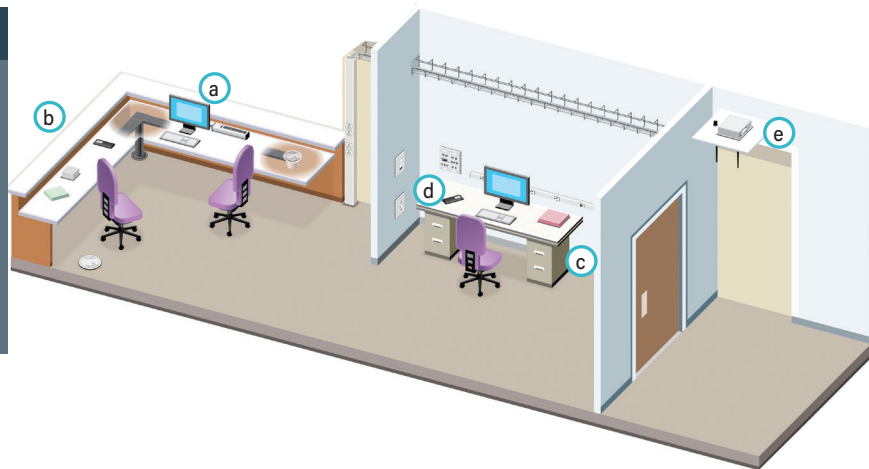
## Atrium & Admissions

No-hassle patient check-in, a safe, open environment plus access to internet and infotainment are quickly becoming the norm in today's modern healthcare facilities. Legrand solutions allow you to create open floor plans from the atrium to admissions while providing access to power A/V and communications.



## Nurses Station

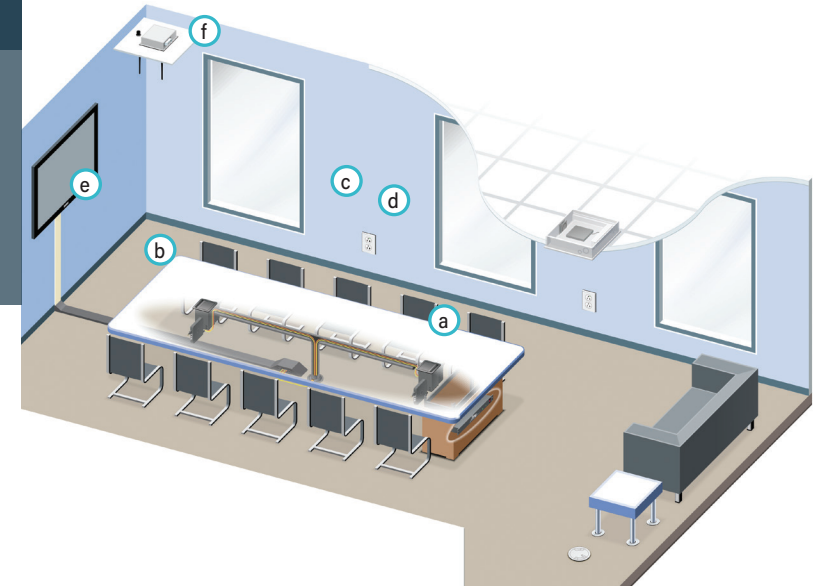
Nurses are the first line of defense. That's why from lighting control systems that help minimize eyestrain to advanced data communications solutions that provide real-time access to patient information, Legrand has made supporting these essential caregivers a top priority. This allows nurses – and the rest of the medical team – to focus on the top priority: providing patients with better care.



- a EZ Patch.....pg 8
- b Surface Mount Boxes.....pg 6
- c Faceplates/Workstation.....pg 7
- d HDJ Jacks.....pg 6
- e Powerwise.....pg 10

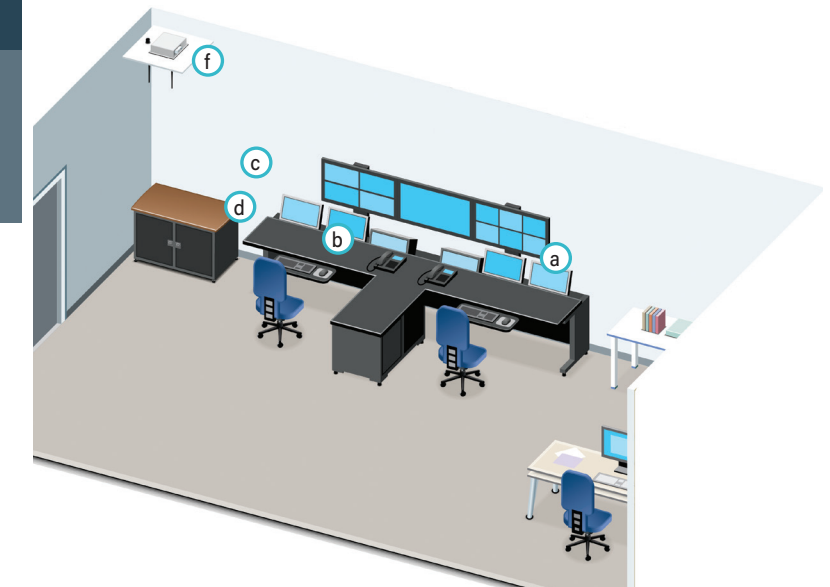
## Meeting Room

Healthcare facilities now include conference rooms that are used for conferences, education and meetings. These rooms all need access to communication technology, and provide for cutting edge A/V and communication connectivity. The InteGreat Series allows for easy and aesthetic way to meets the needs of these high performing meeting spaces.



## Security Room

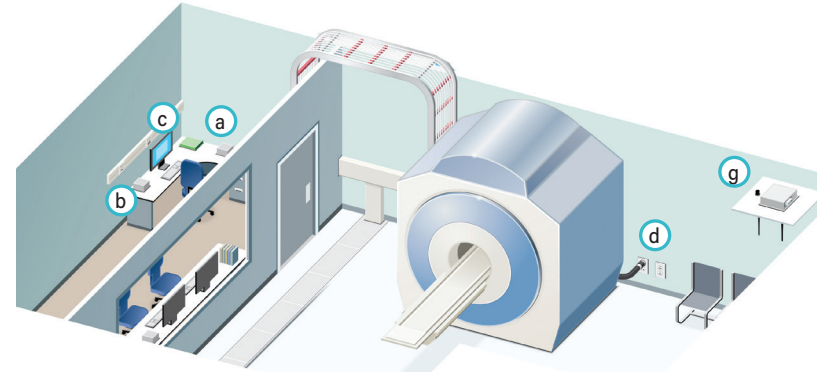
Hospital security is more important than it ever has been in the past. Doctor, patient and staff security needs to be ensured at all times. Security centers must have multiple video systems running on secure servers that Legrand products make possible.



- a EZ Patch.....pg 8
- b Surface Mount Boxes.....pg 6
- c Faceplates/Workstation.....pg 7
- d HDJ Jacks.....pg 6
- e HDJ Multimedia.....pg 6
- f Powerwise.....pg 10

**MRI Room**

From computer-assisted robotic surgeries to sophisticated diagnostic imaging to outpatient surgical procedures, high-capacity power systems are essential for every modern healthcare building. And because technologies can change in a heartbeat, cabling and network systems must adapt easily to rapidly changing environments, all while maintaining the highest standards for performance and reliability. When lives are on the line, there's no room for cabling error or receptacle failure.



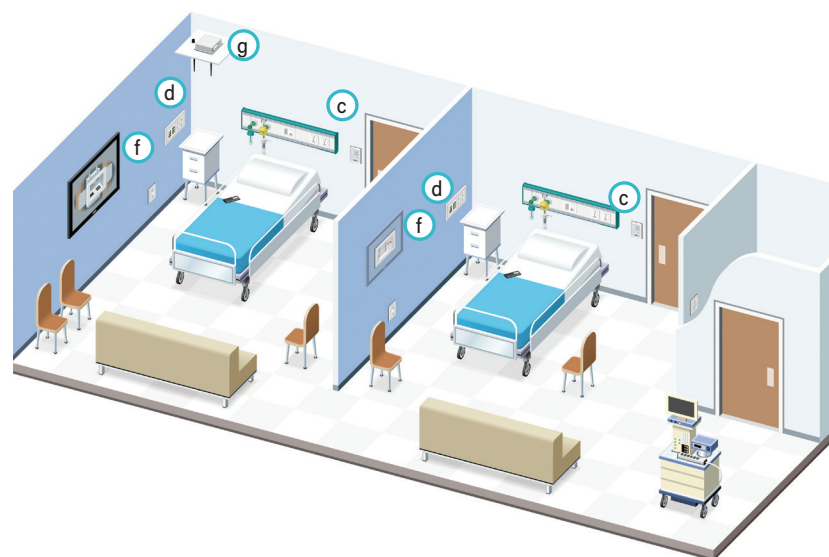
**Lab/Research Room**

Flexibility and safety are of paramount importance in any lab environment. Legrand solutions allow you to manage changing needs easily and safely with our power and protection products, while providing network connectivity for research staff and their diagnostic equipment.



**Patient Room**

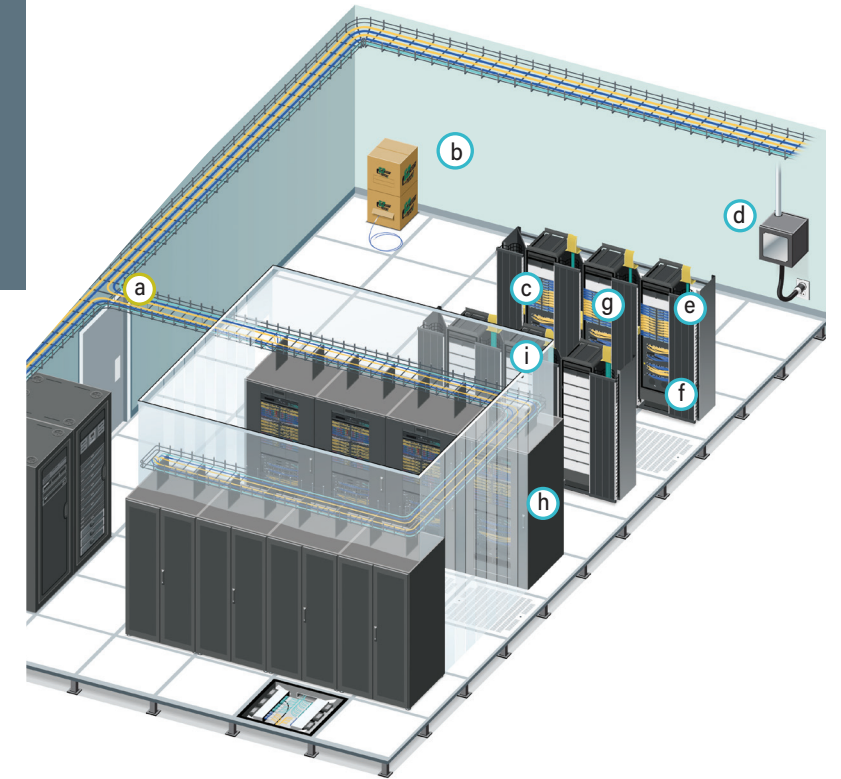
Studies show a positive frame of mind and positive medical outcomes go hand-in-hand. Legrand power and communications systems create a patient-friendly environment that reduces stress while increasing safety.



- a** EZ Patch.....pg 8
- b** Surface Mount Boxes.....pg 6
- c** Faceplates/Workstation.....pg 7
- d** HDJ Jacks.....pg 6
- e** Stainless Steel.....pg 6
- f** Device Protection Adapter.....pg 7
- g** Powerwise.....pg 10

**Data Center**

With a large increase in digital records, data centers are vital to today's healthcare facilities. Data centers provide doctors and staff with instant access to patient information such as billing and insurance information. The increase in digital record keeping means that networks need stronger security and larger storage capabilities. Legrand's datacom solutions are flexible and scalable to accommodate current and future expansions that also support HIPPA and HITECH mandates.



- a** Cablofil® Wire Mesh Cable Tray.....pg 39
- b** EZ Patch.....pg 8
- c** Clarity Copper Solutions.....pg 6
- d** Mighty Mo Wall Mount Cabinet.....pg 34
- e** Mighty Mo 20 Rack.....pg 28
- f** Mighty Mo Vertical Cable Management.....pg 30
- g** Infinium Fiber Solutions.....pg 12
- h** Legrand Cabinet
- i** HiLOC Harness Assembly



## High Density Jacks (HDJ) – Premium Solutions

(Rear Loading, Lacing Cap Termination)

Clarity High Density Jacks (HDJ) unshielded are available in CAT5E, CAT6 and CAT6A, featuring lacing cap termination with icon slot for port ID. Jacks are sold in carton of 20, or bulk pack of 25, termination tool is included with each carton.

PART NO.	DESCRIPTION
HDJ5E-XX	Clarity CAT5E High Density Jack, UTP, T568A/B
HDJ6-XX	Clarity CAT6 High Density Jack, UTP, T568A/B
HDJ6A-XX	Clarity CAT6A High Density Jack, UTP, T568A/B

REMOVE -XX FOR FOG WHITE, FOR OTHER COLORS REPLACE XX WITH TAIL CODES FROM LIST BELOW

Standard	-00	-13	-27	-36	-42	-43	-44	-45	-78	-88	-99
Fog White	Black	Ivory	Violet	Blue	Red	Orange	Yellow	Green	Dark Gray	White	Wiremold Ivory

Standard quantities are packs of 20 (00, 36, 88 available in bulk packs of 25)

## High Density Jacks (HDJS) – Shielded

(Rear Loading, Lacing Cap Termination)

Clarity High Density Jacks (HDJS) shielded are available in CAT6 and CAT6A, featuring lacing cap termination. Shielded HDJ modules accept colored icon inserts for high visibility port identification.

PART NO.	DESCRIPTION
HDJS6	Clarity Shielded CAT6 High Density Jack Plenum Rated
HDJS6A	Clarity Shielded CAT6A High Density Jack Plenum Rated

## HDJ Multimedia Modules – Premium Solutions

Clarity High Density Jack multimedia modules create a quality solution for your unique installation requirements.

Fiber HDJ Modules are available on 73.

PART NO.	DESCRIPTION
HDJF-XX	HDJ F Connector, F/F 75 Ohm
HDJHDMI-XX	HDJ HDMI Connector, F/F
HDJBL10-XX	1-Port HDJ Blank, 10 Pack
HDJ21DCA-XX	HDJ Barrel Connector, Type A
HDJ35ST-XX	HDJ 3.5mm Stereo Jack, F/F, 180° Exit

NOTE: Remove -XX for Fog White, for other colors, replace XX with 00 (Black), 78 (Dark Gray), 88 (White).

## HDJ Surface Mount Boxes – Premium Solutions

Compatible with HDJ series jacks and modules. Label field, screws and double-sided adhesive tape are included for mounting onto almost any surface.

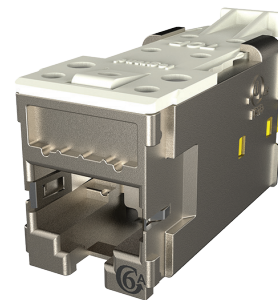
PART NO.	DESCRIPTION
404HDJ1-XX	1-Port HDJ Plastic Surface Mount Box, Plenum Rated
404HDJ2-XX	2-Port HDJ Plastic Surface Mount Box, Plenum Rated
404HDJ4-XX*	4-Port HDJ Plastic Surface Mount Box
404HDJ6-XX	6-Port HDJ Plastic Surface Mount Box

NOTE: Remove -XX for Fog White, for other colors, replace XX with 88 (White).

\* Additional colors available, contact customer service for details



HDJ6A-36



HDJS6A



HDJ21DCA



HDJ21DCA



404HDJ1

## HDJ Workstation Face Plates & Frames – Premium Solutions

HDJ wall plates and frames are supplied with labeling fields and mounting hardware. Accepts rear-loading HDJ series jacks or modules.

PART NO.	DESCRIPTION
403HDJ11-XX	1-Port Face Plate, HDJ Jack, Single-Gang
403HDJ12-XX	2-Port Face Plate, HDJ Jack, Single-Gang
403HDJ13-XX	3-Port Face Plate, HDJ Jack, Single-Gang
403HDJ14-XX	4-Port Face Plate, HDJ Jack, Single-Gang
403HDJ16-XX	6-Port Face Plate, HDJ Jack, Single-Gang
403HDJ212-XX	12-Port Face Plate, HDJ Jack, Dual-Gang
403SHDJ11	1-Port Face Plate, HDJ Jack, Single-Gang Stainless Steel
403SHDJ12	2-Port Face Plate, HDJ Jack, Single-Gang Stainless Steel
403SHDJ13	3-Port Face Plate, HDJ Jack, Single-Gang Stainless Steel
403SHDJ14	4-Port Face Plate, HDJ Jack, Single-Gang Stainless Steel
403SHDJ16	6-Port Face Plate, HDJ Jack, Single-Gang Stainless Steel
403SHDJ28	8-Port Face Plate, HDJ Jack, Single-Gang Stainless Steel
403SHDJ212	12-Port Face Plate, HDJ Jack, Dual-Gang Stainless Steel
419HDJ2-XX	2-Port HDJ Rectangular Stylistics Frame
419HDJ4-XX	4-Port HDJ Rectangular Stylistics Frame
40300270	Single Gang Cover Plate with Label Fields
40300271	Double Gang Cover Plate with Label Fields

NOTE: Remove -XX for Fog White, for other colors, replace XX with 00 (Black), 13 (Ivory), 78 (Dark Gray), 88 (White), 99\* (Wiremold Ivory). \* MOQ required, contact customer service.



403HDJ16-88



403SHDJ14



419HDJ2-13



40300270

## Field Term Plugs – Standard Solutions

Field terminable PCB wired 8 position modular plugs, able to be terminated to either T568A or B wiring, designed for use with solid conductor cable.

PART NO.	DESCRIPTION
HDPUC6A-5PK	Unshielded CAT6A Field Terminated 8 Position Modular Plugs, 5 Pack
HDPUC65E-5PK	Unshielded CAT6/5E Field Terminated 8 Position Modular Plugs, 5 Pack
HDPSC6A-5PK	Shielded CAT6A Field Terminated 8 Position Modular Plugs, 5 Pack
HDPSC6A90-5PK	Shielded CAT6A 90-Degree Field Terminated 8 Position Modular Plugs, 5 Pack



HDPUC6A-5PK



HDPSC6A90-5PK

## Dongles – Standard Solutions

Quick release device protection adapters protect IT equipment and eliminate trip hazards by reducing pull-out force for applications that require a hard wired connection to the LAN. Backward compatible to CAT6 and CAT5E.

PART NO.	DESCRIPTION
DPA6A5PK-08	CAT6A Device Protection Adapter, 5 Pack, Gray
DPA6A5PK-09	CAT6A Device Protection Adapter, 5 Pack, White



DPA6A5PK



# EZ Patch

## EZ Patch Flat Pack

**EZFP Clarity Cords: EZFPM aa bb Q xx - yy**

<b>aa</b> 6 = CAT 6 6A = CAT6A	<b>bb</b> 03 = 3' 09 = 9' 15 = 15' 05 = 5' 10 = 10' 20 = 20' 07 = 7' 12 = 12' 25 = 25'	<b>xx</b> 12 = 12 Cords	<b>yy</b> 00 = Black 04 = Yellow 07 = Violet 02 = Red 05 = Green 08 = Gray 03 = Orange 06 = Blue 09 = White
--------------------------------------	---	----------------------------	--

Example: EZFPM6A05Q12-06 EZ Patch Flat Pack, Clarity, CAT6A, 5ft, 12 Pack, Blue

**EZFP RDC 28AWG Cords: EZFPR aa bb Q xx - yy**

<b>aa</b> 6 = CAT 6 6A = CAT6A	<b>bb</b> 03 = 3' 09 = 9' 15 = 15' 05 = 5' 10 = 10' 20 = 20' 07 = 7' 12 = 12' 25 = 25'	<b>xx</b> 12 = 12 Cords	<b>yy</b> 00 = Black 04 = Yellow 07 = Violet 02 = Red 05 = Green 08 = Gray 03 = Orange 06 = Blue 09 = White
--------------------------------------	---	----------------------------	--

Example: EZFPR615Q12-08 EZ Patch Flat Pack, 28AWG, CAT6, 15ft, 12 Pack, Gray

## EZ Patch Boxes

**EZC aa bb Q xx - yy**

<b>aa</b> 5E = CAT 5E 6 = CAT 6 6A = CAT6A	<b>bb</b> Length: see charts	<b>xx</b> # of cords: see charts	<b>yy</b> Color: see note below charts
---	---------------------------------	-------------------------------------	---

### CAT 5E

Length "bb" Ranges	QTY "xx"
"01" to "02" = 1-2 FT	100
"03" to "07" = 3-7 FT	50
"08" to "12" = 8-12 FT	40
"13" to "15" = 13-15 FT	25

For color options replace "YY" suffix: -09 = White, -08 = Gray, -06 = Blue, -05 = Green, -04 = Yellow, -03 = Orange

Contact Customer Service for availability

### CAT 6

Length "bb" Ranges	QTY "xx"
"01" to "02" = 1-2 FT	100
"03" to "07" = 3-7 FT	50
"08" to "12" = 8-12 FT	40
"13" to "15" = 13-15 FT	25

For quantity greater than 99 add an extra digit to part # (EX. Q100 = Quantity 100).

For color options replace "YY" suffix: -11 = Pink, -09 = White, -08 = Gray, -07 = Purple, -06 = Blue, -05 = Green, -04 = Yellow, -03 = Orange, -02 = Red, -00 = Black

Contact Customer Service for availability

### CAT 6A

Length "bb" Ranges	QTY "xx"
"01" to "02" = 1-2 FT	75
"03" to "05" = 3-5 FT	50
"06" to "07" = 6-7 FT	40
"08" to "11" = 8-11 FT	30
"12" to "13" = 12-13 FT	25
"14" to "15" = 14-15 FT	20

For color options replace "YY" suffix: -09 = White, -07 = Purple, -06 = Blue, -05 = Green, -02 = Red, -00 = Black

Contact Customer Service for availability

## EZ Patch Boxes Reduced Diameter: EZRD aa bb Q xx - yy

<b>aa</b> 6 = CAT 6	<b>bb</b> Length: see charts	<b>xx</b> # of cords: see charts	<b>yy</b> 04 = Yellow 08 = Gray 06 = Blue 09 = White
------------------------	---------------------------------	-------------------------------------	--

## LENGTH & QUANTITY

Length "bb" Ranges	QTY "xx"
"01" to "03" = 1-3 FT	100
"04" to "05" = 4-5 FT	90
"06" to "07" = 6-7 FT	80
"08" to "10" = 8-10 FT	70
"11" to "20" = 11-20 FT	50

Standard configurations shown. Note: For quantity greater than 99 add an extra digit to part # (EX. Q100 = Quantity 100).



EZ Patch Flat Pack



EZ Patch Boxes

# Patch Cords/Patch Panels

## Clarity Patch Cords - Premium Solutions

Clarity patch cords feature stranded conductors, combining performance with flexibility for simple cable management.

PART NO.	PATCH CORD	SHIELDED PATCH CORD	28 AWG REDUCED DIAMETER
CAT5E	MC5EYY-XX		
CAT6	MC6YY-XX	MCS6YY-XX	RDC6YY-XX
CAT6A	MC6AYY-XX	MCS6AYY-XX	RDC610YY-XX

### CLARITY PATCH CORD LENGTHS AND COLOR OPTIONS

#### Length Suffix

Replace YY with length suffix below

01=1 ft 02=2 ft 03=3 ft 04=4 ft 05=5 ft 06=6 ft 07=7 ft 08=8 ft 09=9 ft  
10=10 ft 11=11 ft 12=12 ft 13=13 ft 14=14 ft 15=15 ft 20=20 ft 25=25 ft

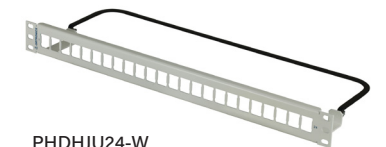
#### Color Suffix

Remove -XX for Fog White, for other colors replace XX with color suffix below

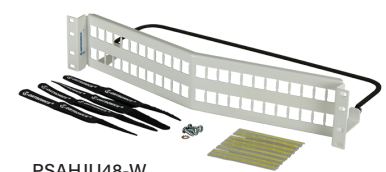
-00	-02	-03	-04	-05	-06	-07	-08	-09	-11
Black	Red	Orange	Yellow	Green	Blue	Violet	Gray	White	Pink



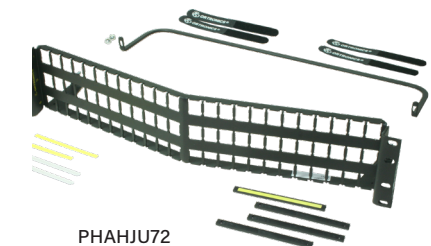
MC6A03-06



PHDHJU24-W



PSAHJU48-W



PHAHJU72

## HDJ Unshielded (UTP) Patch Panels - Premium Solutions

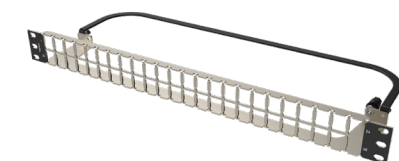
24, 48 and 72-port Clarity HDJ unloaded patch panels. Available in flat and angled. Accepts rear-loading HDJ series jacks or modules. Includes rear wire manager.

FLAT		ANGLED		DESCRIPTION
Black	White	Black	White	
PHDHJU24	PHDHJU24-W	PHAHJU24	PHAHJU24-W	24-Port HDJ Unloaded Patch Panel, 1RU
PSDHJU48	PSDHJU48-W	PSAHJU48	PSAHJU48-W	48-Port Standard Density HDJ Unloaded Patch Panel, 2RU
PHDFMU48	-	-	-	48-Port HDJ Unloaded Fiber Panel Kit, with Label Bar, 1RU
PHDHJU48	PHDHJU48-W	PHAHJU48	PHAHJU48-W	48-Port HDJ Unloaded Patch Panel, 1RU
PHDHJU72	PHDHJU72-W	PHAHJU72	PHAHJU72-W	72-Port HDJ Unloaded Patch Panel, 2RU
HDCM001	-	-	-	Fiber Rear Cable Management Tray, 1RU, Management Spools Included

## HDJ Shielded (FTP) Patch Panels - Premium Solutions

24 and 48-Port Clarity HDJ shielded, unloaded patch panels. Available in flat and angled, accepts HDJS series jacks. Jacks rear load into panel. Includes rear wire manager and ground lugs.

FLAT		ANGLED		DESCRIPTION
Black	White	Black	White	
PHDHJSU24	PHDHJSU24-W	PHAHDJSU24	PHAHDJSU24-W	24-Port HDJ Shielded, Unloaded Patch Panel, 1RU
PHDHJSU48	PHDHJSU48-W	PHAHDJSU48	PHAHDJSU48-W	48-Port HDJ Shielded, Unloaded Patch Panel, 1RU
PSDHJSU48	PSDHJSU48-W	PSAHDJSU48	PSAHDJSU48-W	48-Port HDJ Shielded, Unloaded Patch Panel, 2RU



PHDHJSU48

# Pre-Terminated Copper Systems

Each Clarity® SNAP cable assembly includes an identification label, which includes part number, performance level, and serialized quality assurance number for future traceability

## PRH

### Multi Cable Harness Matrix

Choose your cable type, number of cables, color, length and leg style using the shaded code.

Notes: Contact sales for lead-times and minimums for other cable colors.



PRH2R6B06XXX11

CABLE TYPE	# OF CABLES	COLOR	LENGTH (Includes Legs)	RJ45 END LEGS		SNAP END LEGS	
CAT6A Plenum	XP	6 in a Spiral-Bound Bundle	6B	No stagger w/ Protective Sock	1	No Stagger w/ Protective Sock	1
CAT6A Riser	XR	6 in Mesh	6M	Stagger Left w/ Protective Sock	2	Stagger Left w/ Protective Sock	2
CAT6 Plenum	2P			Stagger Right w/ Protective Sock	3	Stagger Right w/ Protective Sock	3
CAT6 Riser	2R			No Stagger w/ Pulling Sock	4	No Stagger w/ Pulling Sock	4
				Stagger Left w/ Pulling Sock	5	Stagger Left w/ Pulling Sock	5
				Stagger right w/ Pulling Sock	6	Stagger right w/ Pulling Sock	6

Example -PRH2R6B06XXX11

## PRS

### Single Cable Harness Matrix

Choose your cable type, number of cables, color, length and leg style using the shaded code.

Notes: Contact sales for lead-times and minimums for other cable colors.



PRS2R09XXX00

CABLE TYPE	COLOR	LENGTH (Includes Legs)	CABLE NUMBER LABEL	
			No #	00
CAT6A Plenum	XP	Blue 06 XXX (Feet)	#1	01
CAT6A Riser	XR		#2	02
CAT6 Plenum	2P		#3	03
CAT6 Riser	2R		#99	99

Example - PRS2R09XXX00

## Powerwise Pre-Terminated Assemblies – Premium Solutions

Built with Superior Essex PowerWise® 1G 4PPoE cable, these assemblies provide the best performance and overall value for 4 Pair Power over Ethernet (4PPoE) applications requiring up to 100W of power and up to 1 Gigabit Ethernet performance. PowerWise 1G 4PPoE assemblies are specifically designed to mitigate temperature build-up, offer exceptional energy efficiency and ensure performance (up to 1 Gigabit Ethernet) over the lifetime of your system.

RJ45 TO RJ45	RJ45 TO BLUNT	DESCRIPTION
PW5EPYYDB-XX	PW5EPYYSB-XX	CAT5E 1G Solid Cable Assemblies – Plenum
PW5ERYDB-XX	PW5ERYYSB-XX	CAT5E 1G Solid Cable Assemblies – Riser

### POWERWISE LENGTH AND COLOR CHOICES

Replace YY with length suffix and XX with color suffix below

Length Suffix				Color Suffix			
03=3 ft	05=5 ft	10=10 ft	15=15 ft	-00	-06	-07	-09
20=20 ft	25=25 ft	30=30 ft	35=35 ft	Blue	Blue	Violet	White
40=40 ft	45=45 ft	50=50 ft	60=60 ft				
70=70 ft	80=80 ft	90=90 ft	100=100 ft				



PW5ER10DB-07

# SNAP Pre-Terminated Copper Systems



## SNAP Panels – Improved Rear Cable Management

Clarity® SNAP™ patch panels offer improved rear cable management with the addition of an adjustable depth rear management bar. The rear portion of these bars is also removable to provide more working room for the initial termination of panels. After cables are SNAP terminated, the rear bars are attached and adjusted to the depth that best matches the cable and rack selections.

SNAP panels are also supplied with SNAP-on positioning bend limiters. These plastic cable management aids assist with maintaining proper bend radius of all cables while minimizing the stress on any one cable. This is especially beneficial for cable bundles, as this allows the dissipation of any stress across the entire bundle instead of any one cable termination.

FLAT PANELS		
FLAT 24-PORT PART NO.	FLAT 48-PORT PART NO.	DESCRIPTION
PPCF610U24	PPCF610U48	Clarity 10G flat panels with 6-port modules
PPCF66U24	PPCF66U48	Clarity 6 flat panels with 6-port modules
ANGLED PANELS		
ANGLED 24-PORT PART NO.	ANGLED 48-PORT PART NO.	DESCRIPTION
PPCA610U24	PPCA610U48	Clarity 10G angled panels with 6-port modules
PPCA66U24	PPCA66U48	Clarity 6 angled panels with 6-port modules



PPCF66U24



PPCA66U48

## SNAP TracJack Workstation Modules

(SNAP to Standard RJ45)

PART NO.	DESCRIPTION
TJSN6A-XX	Clarity CAT6A
TJSN6-XX	Clarity CAT6

NOTE: For color options, replace XX with 09 (Fog White), 36 (Blue), 42 (Orange), 44 (Yellow), 45 (Green), 68 (Gray).



TRACJACK FACE PLATE



TJSN6-36



TJSNIC-53

## SNAP Inline Couplers

(SNAP to SNAP feedthru)

SNAP™ inline coupler will allow multiple lengths of SNAP cable assemblies to be connected together in a horizontal channel or permanent link. This product is targeted for use in the open office, flexible workplaces or environments where there is a predisposition that work station layouts will be frequently modified. Factory terminated cabling offers a time saving approach to initial installation and future MAC work.

PART NO.	DESCRIPTION
TJSNIC-53	SNAP inline coupler TracJack®, orange



# Infinium acclAIM

acclAIM has redefined fiber architecture, replacing cassette-based solutions with direct connections, which eliminates extra components, and cost. acclAIM delivers the lowest insertion loss available on the market, the most optical headroom, improved density, flexibility and system lifecycle.

The acclAIM™ Alignment Independent Multifiber (AIM) fiber interconnect system is designed to mate multiples of 8-fiber trunk cable connectors directly to arrays of twin-fiber patch cord connectors by means of a “conversion adapter”.

## Features and Benefits

- Approaching Infinite Scalability: Based on the simplified design, unparalleled performance, and flexibility of architecture, Infinium acclAIM has an almost limitless migration path
  - Media Interface: 10GBASE, 25GBASE, 40GBASE, 100GBASE, 400GBASE & Beyond
- Sustainable Migration: Due to the vast migration capability acclAIM enables sustainability through fewer components and drastically longer life cycles making the acclAIM network infrastructure solution a sustainable building asset for decades to come.
- Application Defined Polarity: Polarity can be adapted to nearly any link configuration; preplanned, on site, or on the fly - No option to determine when ordering or designing.
- Direct Mating Breakout: acclAIM connectors mate directly to an array of twin fiber patch cords - Simplify Connectivity
- No Gender Considerations: No pins, just direct connections
- Go Live Faster: Easy to stock and short lead times for conversion adapters enable rapid or emergency deployment
- Near Lossless: Insertion loss near zero
- Scan QR code for updates
- HDFA Ultra-High Density Plus (UHD+): Max # of fibers per RU **192F** (96 MDC)
- OFP Ultra High Density: Max # of fibers per RU **144F** (72 MDC)



## Fiber Conversion Adapter Panels

Part Number	Description	Connector Style	Fiber / Adapter Count	Color
HDFP-AAE24AC	Infinium Adapter	acclAIM to acclAIM	24 (3 - Adapters)	Blue
HDFP-AAE24LC	Infinium Adapter	acclAIM to acclAIM	24 (3 - Adapters)	Aqua
HDFP-AAE24QC	Infinium Adapter	acclAIM to acclAIM	24 (3 - Adapters)	Lime
HDFP-AAE48AC	Infinium Adapter	acclAIM to acclAIM	48 (6 - Adapters)	Blue
HDFP-AAE48LC	Infinium Adapter	acclAIM to acclAIM	48 (6 - Adapters)	Aqua
HDFP-AAE48QC	Infinium Adapter	acclAIM to acclAIM	48 (6 - Adapters)	Lime
HDFP-AME24LC	acclAIM / MDC (4)	acclAIM / MDC (4)	24 (3 - Adapters)	Aqua
HDFP-AME24QC	acclAIM / MDC (4)	acclAIM / MDC (4)	24 (3 - Adapters)	Lime
HDFP-AME24AC	acclAIM / MDC (4)	acclAIM / MDC (4)	24 (3 - Adapters)	Blue
HDFP-AME48LC	acclAIM / MDC (4)	acclAIM / MDC (4)	48 (6 - Adapters)	Aqua
HDFP-AME48QC	acclAIM / MDC (4)	acclAIM / MDC (4)	48 (6 - Adapters)	Lime
HDFP-AME48AC	acclAIM / MDC (4)	acclAIM / MDC (4)	48 (6 - Adapters)	Blue
OFP-AAE24AC	Q-Series	acclAIM to acclAIM	24 (3 - Adapters)	Blue
OFP-AAE24LC	Q-Series	acclAIM to acclAIM	24 (3 - Adapters)	Aqua
OFP-AAE24QC	Q-Series	acclAIM to acclAIM	24 (3 - Adapters)	Lime
OFP-AAE48AC	Q-Series	acclAIM to acclAIM	48 (6 - Adapters)	Blue
OFP-AAE48LC	Q-Series	acclAIM to acclAIM	48 (6 - Adapters)	Aqua
OFP-AAE48QC	Q-Series	acclAIM to acclAIM	48 (6 - Adapters)	Lime



## acclAIM Splice-On Pigtail

Part Number	Connector Style	Core Diam.	Fiber Type	Fiber Count	Jacket Type	Length	UOM	Color
C00AMC37S5J0M0003M	acclAIM to Laser Cleaved Blunt End	9/125 µm	OS2 (SM)	8	Plenum	2	Meters	Yellow
C00AMC37S5E0M0003M	acclAIM to Laser Cleaved Blunt End	50/125 µm	OM4 (MM)	8	Plenum	3	Meters	Aqua

# Infinium acclAIM



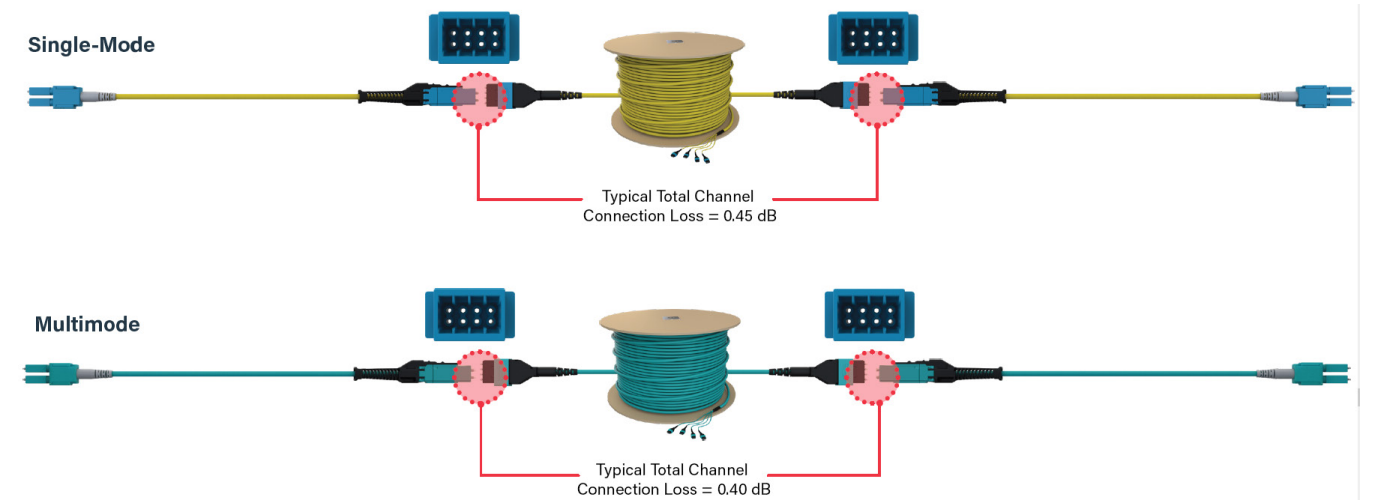
## Fiber Trunk Cable Assembly

Part Number	Description	Fiber Type	Fiber Count	Polarity	Jacket Type	Length	UoM
CAMAMC37S5JMM0xxM(F)	Infinium Core	OS2	8	C	Plenum	xxx	M / F
CAMAMC37S5EMM0xxM(F)	Infinium Core	OM4	8	C	Plenum	xxx	M / F
CAMAMC37S5HMM0xxM(F)	Infinium Core	OM5	8	C	Plenum	xxx	M / F
CAMAMC63SAJMM0xxM(F)	Infinium Core	OS2	24	C	Plenum	xxx	M / F
CAMAMC63SAEMM0xxM(F)	Infinium Core	OM4	24	C	Plenum	xxx	M / F
CAMAMC63SAHMM0xxM(F)	Infinium Core	OM5	24	C	Plenum	xxx	M / F
CAMAMC63SEJMM0xxM(F)	Infinium Core	OS2	48	C	Plenum	xxx	M / F
CAMAMC63SEEMM0xxM(F)	Infinium Core	OM4	48	C	Plenum	xxx	M / F
CAMAMC63SEHMM0xxM(F)	Infinium Core	OM5	48	C	Plenum	xxx	M / F

Note: UOM = Unit of Measure - (M) Meters / (F) Feet  
 Note: Other Pre-Configured options are available or trunks can be fully customized to fit your individual need.

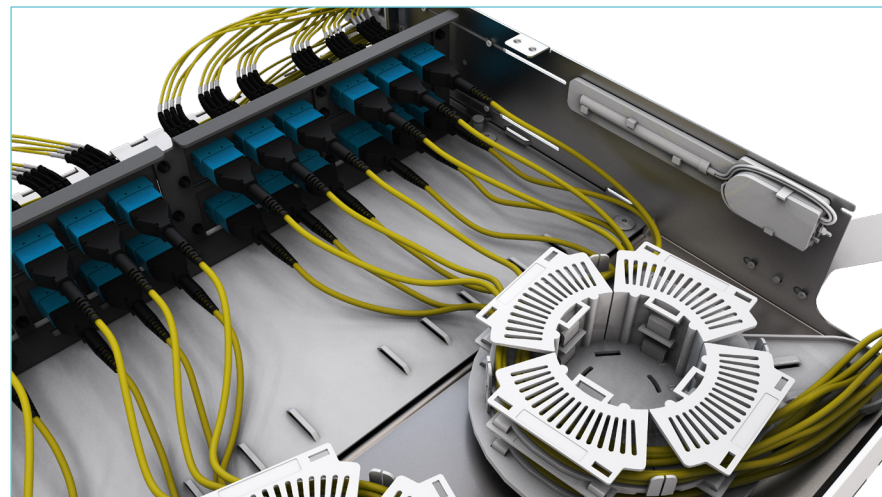
## Pre-Configured LC Uniboot to MDC Patch Cords

Part Number	Description	Fiber Type	Polarity	Form Factor	Jacket Type	Length	UOM	Insertion Loss (Max)
L1-802JA2JYB0002F	Infinium Core, LC Uniboot to MDC	OS2	A-A	Duplex DFX	Plenum	2	Feet	0.30 dB
L1-802JA2JYB0003F	Infinium Core, LC Uniboot to MDC	OS2	A-A	Duplex DFX	Plenum	3	Feet	0.30 dB
L1-802JA2JYB0004F	Infinium Core, LC Uniboot to MDC	OS2	A-A	Duplex DFX	Plenum	4	Feet	0.30 dB
L1-802JA2JYB0001M	Infinium Core, LC Uniboot to MDC	OS2	A-A	Duplex DFX	Plenum	1	Meters	0.30 dB
L1-802JA2JYB0002M	Infinium Core, LC Uniboot to MDC	OS2	A-A	Duplex DFX	Plenum	2	Meters	0.30 dB
L1-802JA2JYB0003M	Infinium Core, LC Uniboot to MDC	OS2	A-A	Duplex DFX	Plenum	3	Meters	0.30 dB
L1-802JA2EAB0002F	Infinium Core, LC Uniboot to MDC	OM4	A-A	Duplex DFX	Plenum	2	Feet	0.50 dB
L1-802JA2EAB0003F	Infinium Core, LC Uniboot to MDC	OM4	A-A	Duplex DFX	Plenum	3	Feet	0.50 dB
L1-802JA2EAB0004F	Infinium Core, LC Uniboot to MDC	OM4	A-A	Duplex DFX	Plenum	4	Feet	0.50 dB
L1-802JA2EAB0001M	Infinium Core, LC Uniboot to MDC	OM4	A-A	Duplex DFX	Plenum	1	Meters	0.50 dB
L1-802JA2EAB0002M	Infinium Core, LC Uniboot to MDC	OM4	A-A	Duplex DFX	Plenum	2	Meters	0.50 dB
L1-802JA2EAB0003M	Infinium Core, LC Uniboot to MDC	OM4	A-A	Duplex DFX	Plenum	3	Meters	0.50 dB



## LC to acclAIM Harness

Part Number	Connector Style	Core Diameter	Fiber Type	Fiber Count	Length	UoM	Color
C80AM137S5JEM0001M	4x LC to acclAIM	9/125 µm	OS2 (SM)	8	1	Meters	Yellow
C80AM137S5JEM0002M	4x LC to acclAIM	9/125 µm	OS2 (SM)	8	2	Meters	Yellow
C80AM137S5JEM0003M	4x LC to acclAIM	9/125 µm	OS2 (SM)	8	3	Meters	Yellow
C80AM137S5JEM0004M	4x LC to acclAIM	9/125 µm	OS2 (SM)	8	4	Meters	Yellow
C80AM137S5JEM0005M	4x LC to acclAIM	9/125 µm	OS2 (SM)	8	5	Meters	Yellow
C80AM137S5JEM0010M	4x LC to acclAIM	9/125 µm	OS2 (SM)	8	10	Meters	Yellow
C80AM137S5JEM0002F	4x LC to acclAIM	9/125 µm	OS2 (SM)	8	2	Feet	Yellow
C80AM137S5JEM0003F	4x LC to acclAIM	9/125 µm	OS2 (SM)	8	3	Feet	Yellow
C80AM137S5JEM0004F	4x LC to acclAIM	9/125 µm	OS2 (SM)	8	4	Feet	Yellow
C80AM137S5JEM0005F	4x LC to acclAIM	9/125 µm	OS2 (SM)	8	5	Feet	Yellow
C80AM137S5JEM0010F	4x LC to acclAIM	9/125 µm	OS2 (SM)	8	10	Feet	Yellow
C80AM137S5JEM0015F	4x LC to acclAIM	9/125 µm	OS2 (SM)	8	15	Feet	Yellow
C80AM137S5EEM0001M	4x LC to acclAIM	50/125 µm	OM4 (MM)	8	1	Meters	Aqua
C80AM137S5EEM0002M	4x LC to acclAIM	50/125 µm	OM4 (MM)	8	2	Meters	Aqua
C80AM137S5EEM0003M	4x LC to acclAIM	50/125 µm	OM4 (MM)	8	3	Meters	Aqua
C80AM137S5EEM0004M	4x LC to acclAIM	50/125 µm	OM4 (MM)	8	4	Meters	Aqua
C80AM137S5EEM0005M	4x LC to acclAIM	50/125 µm	OM4 (MM)	8	5	Meters	Aqua
C80AM137S5EEM0010M	4x LC to acclAIM	50/125 µm	OM4 (MM)	8	10	Meters	Aqua
C80AM137S5EEM0002F	4x LC to acclAIM	50/125 µm	OM4 (MM)	8	2	Feet	Aqua
C80AM137S5EEM0003F	4x LC to acclAIM	50/125 µm	OM4 (MM)	8	3	Feet	Aqua
C80AM137S5EEM0004F	4x LC to acclAIM	50/125 µm	OM4 (MM)	8	4	Feet	Aqua
C80AM137S5EEM0005F	4x LC to acclAIM	50/125 µm	OM4 (MM)	8	5	Feet	Aqua
C80AM137S5EEM0010F	4x LC to acclAIM	50/125 µm	OM4 (MM)	8	10	Feet	Aqua
C80AM137S5EEM0015F	4x LC to acclAIM	50/125 µm	OM4 (MM)	8	15	Feet	Aqua



## M4 Drawer Face – Premium Solutions

The Infinium HD-E enclosures, a 2018 Cabling Installation & Maintenance Innovators Awards Silver Honoree, are the perfect solution for fiber networks in data centers and building networks. The high-density footprint accommodates up to 96 LC fibers in a 1U rack space. These enclosures have many innovative features designed with installers, contractors, and network professionals in mind – providing a simplified process when installing or working within the enclosures.

This enclosure features an M4 (Base 12) drawer face, accepting Legrand’s HDFP adapter panels, M4 cassettes, and M4 splice cassettes. The drawer face can be removed and replaced with a LM8 (Base 8) drawer face for network upgrades or migrations after being installed within a rack.

### Features:

- Single-person install and tool-less adjustments
- Internal LED lights and white tray for visibility
- Easy migration between Base 12 and Base 8
- Innovative Cable Management
- Max # of fibers per RU (SC) – **48** (LC) – **96**
- Max # of fibers per RU (12F MPO) – **384**
- Max # of fibers per RU (24F MPO) – **768**
- Cassettes/Adapter panels per RU – **4**

PART NO.	DESCRIPTION
INFC01U-M4-E	Infinium HD-E Rack Mount Enclosure 1U, M4 Drawer Face
INFC02U-M4-E	Infinium HD-E Rack Mount Enclosure 2U, M4 Drawer Face
INFC04U-M4-E	Infinium HD-E Rack Mount Enclosure 4U, M4 Drawer Face

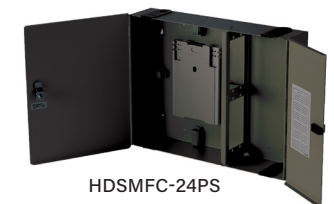


## High Density Wall Mount Fiber Patch/Splice Enclosure – Premium Solutions

The High-Density Wall Mount Fiber Patch/Splice Enclosure system is designed to support high density LAN or POL applications in building networks. The all steel chassis enables reliable protection and management of fiber optic cable patching, splicing, and connecting. The enclosure also enables distribution of backbone cabling to active equipment, switching, or cross/interconnect horizontal area. The 4-panel footprint accommodates up to 96 LC fibers. Each enclosure is compatible with HDFP Adapter Panels, Fiber Splice Trays, and LM4/M4 Pre-terminated or Splice Cassettes.

### Features:

- High Density: Accepts 8, 12, 16 or 24 fiber LM4 or M4 pre-terminated or splice cassettes, splice tray, and HDFP adapter panels
- Low-Profile Design: Providing unobtrusive protection and management of all enclosed cabling infrastructure
- Cable Management: Protect and safely route all sensitive fibers with the included cable management system, central strength member bracket, and bend limiters
- Cable Ingress and Egress: Four ingress or egress points with rubber grommets help to protect and route all connectivity infrastructure.



PART NO.	DESCRIPTION	MAX FIBER COUNT	MAX LC PORT COUNT	MAX PANEL COUNT
HDSMF-24PS-00	High Density Wall Mount Fiber Patch/Splice Enclosure, 4 Panel, Black	768	96	4



# Infinium™ High Density Enhanced Enclosure System

## High-Density Fiber Patch Panel – Premium Solutions

Legrand® raised floor patch panels allow data center managers and designers to take advantage of under-utilized installation space beneath the raised floor structure, providing greater flexibility in structured cabling design and maximizing usage of premium data center floor space. Specifically designed to be installed in raised floor enclosures that are part of the cabling pathways, the raised floor fiber patch panels address the special bend radius and depth requirements of fiber optic cabling systems.

The raised floor patch panel is also often used with the Mighty Mo® overhead rack, found on page 136. The Mighty Mo overhead cable pathway racks provide cable management and an innovative mounting method for 19 in rack mount copper and fiber panels and enclosures. The overhead pathway racks allow horizontal connectivity to be supported by the overhead pathway, freeing up valuable rack or cabinet space below.

### Features:

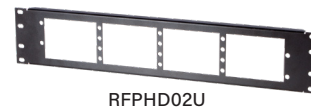
- Fiber patch panel for underfloor or overhead installation
- 19 in W, 1-unit or 2-unit high models available
- Designed for installation within 2 ft x 2ft underfloor box with angled mounting rails
- Removable/reusable labeling cards

### Benefits

- Allows data center manager to take advantage of under-utilized space beneath raised floor or overhead
- Provides the flexibility to suit any installation
- Horizontal patch panel orientation
- Convenient and accurate cabling administration and record keeping that is easily removed to provide rear patching access

## High-Density Flush Mounting Fiber Patch Panel

PART NO.	HEIGHT	ADAPTER COMPATIBILITY	CASSETTE COMPATIBILITY	CAPACITY	MAX FIBER COUNT (LC)
RFPHD01U	1 RU	HDFP	LM4 / M4	4	96 Quad
RFPHD02U	2 RU	HDFP	LM4 / M4	8	192 Quad



RFPHD02U

## Flush Mounting Fiber Patch Panel

PART NO.	HEIGHT	ADAPTER COMPATIBILITY	CASSETTE COMPATIBILITY	CAPACITY	MAX FIBER COUNT (LC)
RFP01U	1 RU	OFP	LM2 / M2	3	72 Quad
RFP02U	2 RU	OFP	LM2 / M2	6	144 Quad



RFP01U

# Infinium™ High Density Enhanced Enclosure System



## High-Density Cable Manager

The high-density cable manager can be used behind the Mighty Mo® overhead cable pathway rack to manage excess slack. Includes: (1) 8pk of 1/4 round cable management spools (Makes (2) complete spools)

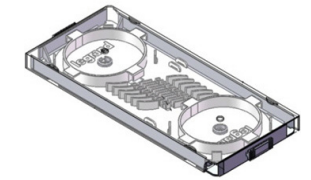
PART NO.	DESCRIPTION
HDCM-001	High Density Cable Manger, 1 RU - Black
HDCM-002	High Density Cable Manger, 2 RU - Black
60401185	Additional Fiber Spool Kit, (1) 8 Pack, makes 2 complete spools



HDCM-001

## Splice Tray Kits

PART NO.	DESCRIPTION
FST4-F012	Compact Splice Tray Kit, Fusion Splice Single Fiber - 12 Fiber
FST3-F048	Compact Splice Tray Kit, Fusion Splice Single Fiber - 48 Fiber
FST3-A144	Splice Tray Kit, Fusion Splice Ribbon Fiber - 144 Fiber



FST4-F012



FST3-F048



FST3-A144

# Adapter Panels

## HDFP Adapter Panel – Premium Solutions

Infinium HDFP Adapter Panels offer pass through connections and front-loading access. The compact design optimizes space and features fiber port labeling for easier identification. Compatible with Infinium HD-E Rack Mount Fiber Enclosure with M4 Drawer Face.

PART NO.	CONNECTOR STYLE	FIBER TYPE	FIBER COUNT	COLOR
HDFP-BLANK	NA	NA	NA	Black
HDFP-LCD08AC	LC Duplex	OS2 (SM)	8	Blue
HDFP-LCD08LC	LC Duplex	OM3 / OM4 (MM)	8	Aqua
HDFP-LCD08QC	LC Duplex	OM5 (MM)	8	Lime
HDFP-LCD12AC	LC Duplex	OS2 (SM)	12	Blue
HDFP-LCD12CC	LC Duplex APC	OS2 (SM)	12	Green
HDFP-LCD12LC	LC Duplex	OM3 / OM4 (MM)	12	Aqua
HDFP-LCD12QC	LC Duplex	OM5 (MM)	12	Lime
HDFP-LCD12MB	LC Duplex	OM1 (MM)	12	Beige
HDFP-LCQ16AC	LC Quad	OS2 (SM)	16	Blue
HDFP-LCQ16LC	LC Quad	OM3 / OM4 (MM)	16	Aqua
HDFP-LCQ16QC	LC Quad	OM5 (MM)	16	Lime
HDFP-LCQ24AC	LC Quad	OS2 (SM)	24	Blue
HDFP-LCQ24BC	LC Quad	OS2 (SM)	24	Orange
HDFP-LCQ24FC	LC Quad	All	24	White
HDFP-LCQ24GC	LC Quad	OS2 (SM)	24	Red
HDFP-LCQ24HC	LC Quad	All	24	Black
HDFP-LCQ24JC	LC Quad	OM3 / OM4 (MM)	24	Violet
HDFP-LCQ24LC	LC Quad	OM3 / OM4 (MM)	24	Aqua
HDFP-LCQ24QC	LC Quad	OM5 (MM)	24	Lime
HDFP-LCQ24MB	LC Quad	OM1 (MM)	24	Beige
HDFP-MDC32AC	MDC	OS2 (SM)	32	Blue
HDFP-MDC32LC	MDC	OM3/OM4 (MM)	32	Aqua
HDFP-MDC32QC	MDC	OM5 (MM)	32	Lime
HDFP-MPA72CA	(6) MPO	OS2 (SM)	72	Green
HDFP-MPA72FA	(6) MPO	OM5 (MM)	72	White
HDFP-MPA72LA	(6) MPO	OM3 / OM4 (MM)	72	Aqua
HDFP-MPA72ED	(6) MPO	All (TYPE B-Aligned key)	72	Gray
HDFP-MPA72GA	(6) MPO	All (24)	144	Red
HDFP-MPA96CA	(8) MPO	OS2 (SM)	96	Green
HDFP-MPA96FA	(8) MPO	OM5 (MM)	96	White
HDFP-MPA96LA	(8) MPO	OM3 / OM4 (MM)	96	Aqua
HDFP-SCD12AC	SC Duplex	OS2 (SM)	12	Blue
HDFP-SCD12CC	SC Duplex APC	OS2 (SM)	12	Green
HDFP-SCD12LC	SC Duplex	OM3 / OM4 (MM)	12	Aqua
HDFP-SCD12QC	SC Duplex	OM5 (MM)	12	Lime



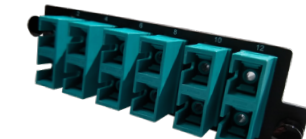
HDFP-LCD12LC



HDFP-LCQ24AC



HDFP-MPA96CA



HDFP-SCD12AC

# Cassettes

## M4 Cassettes – Premium Solutions

Infinium M4 Cassettes are part of a complete fiber solution. When combined with matched Infinium Trunks and Infinium Patch Cable Assemblies the solution can enable industry leading pre-terminated performance and universal polarity for simple, fast and consistent and simplified installation. Compatible with Infinium HD-E Rack Mount Fiber Enclosure with M4 Drawer Face.

ITEM NO.	CONNECTOR STYLE (FR TO RR)	FIBER TYPE	FIBER COUNT	TIER LEVEL	TOTAL INSERTION LOSS (MAX)	FRONT INSERTION LOSS (MAX)	REAR INSERTION LOSS (MAX)	RETURN LOSS (MIN)	POLARITY
LM4-LC12H-1A1UN	LC PC - MPO (M) PC	OM4	12	Core	1.25dB	0.50dB	0.75dB	19dB	Universal
LM4-LC24H-2A1UN	LC PC - MPO (M) PC	OM4	24	Core	1.25dB	0.50dB	0.75dB	19dB	Universal
LM4-LC24H-3C1UN	LC PC - 3 MPO(F) PC	OM4	24	Core	1.25dB	0.50dB	0.75dB	19dB	Universal
LM4-LC12J	LC UPC - MPO (M) APC	OS2	12	Core	1.05dB	0.30dB	0.75dB	52dB	Universal
LM4-LC24J	LC UPC - MPO (M) APC	OS2	24	Core	1.05dB	0.30dB	0.75dB	52dB	Universal
LM4-LC24J-3C1UN	LC UPC - 3 MPO(F) APC	OS2	24	Core	1.05dB	0.30dB	0.75dB	52dB	Universal
LM4-LA24J-3C1UN	LC APC - 3 MPO(F) APC	OS2	24	Core	1.15dB	0.40dB	0.75dB	54.6dB	Universal
LM4-LC24H-3C3UN	LC PC - 3 MPO(F) PC	OM4	24	Ultra	0.50dB	0.15dB	0.35dB	19dB	Universal
LM4-LA12J-1A2UN	LC APC - MPO (M) APC	OS2	12	Ultra	0.60dB	0.25dB	0.35dB	54.6dB	Universal
LM4-LC12J-1A2UN	LC UPC - MPO (M) APC	OS2	12	Ultra	0.60dB	0.25dB	0.35dB	52dB	Universal
LM4-LC24J-2A2UN	LC UPC - MPO (M) APC	OS2	24	Ultra	0.60dB	0.25dB	0.35dB	52dB	Universal
LM4-LC24J-1A2H1	LC UPC - MPO 24F (M) APC	OS2	24	Ultra	0.60dB	0.25dB	0.35dB	52dB	100GbE to 10GbE*
LM4-LC12H	LC PC - MPO (M) PC	OM4	12	Ultra	0.50dB	0.15dB	0.35dB	19dB	Universal
LM4-LC24H	LC PC - MPO (M) PC	OM4	24	Ultra	0.50dB	0.15dB	0.35dB	19dB	Universal
LM4-LA24J-3C2UN	LC APC - 3 MPO(F) APC	OS2	24	Ultra	0.60dB	0.25dB	0.35dB	54.6dB	Universal
LM4-LC24J-3C2UN	LC UPC - 3 MPO(F) APC	OS2	24	Ultra	0.60dB	0.25dB	0.35dB	52dB	Universal
LM4-LC24J-1A3H1	LC UPC - MPO 24F (M) APC	OS2	24	Quantum	0.375dB	0.14dB	0.235dB	52dB	100GbE to 10GbE*
LM4-LC12H-1A4UN	LC PC - MPO (M) APC	OM4	12	Quantum	0.35dB	0.10dB	0.25dB	37dB	Universal
LM4-LC24H-2A4UN	LC PC - MPO (M) APC	OM4	24	Quantum	0.35dB	0.10dB	0.25dB	37dB	Universal
LM4-LC12W	LC PC - MPO (M) APC	OM5	12	Quantum	0.35dB	0.10dB	0.25dB	37dB	Universal
LM4-LC24W	LC PC - MPO (M) APC	OM5	24	Quantum	0.35dB	0.10dB	0.25dB	37dB	Universal
LM4-LC12J-1A3UN	LC UPC - MPO (M) APC	OS2	12	Quantum	0.375dB	0.14dB	0.235dB	52dB	Universal
LM4-LC24J-2A3UN	LC UPC - MPO (M) APC	OS2	24	Quantum	0.375dB	0.14dB	0.235dB	52dB	Universal
M4MAE24-09A2K1	(3)MPO (M) APC - (2)MPO (M) APC	OS2	24	Ultra	0.70dB	0.35dB	0.35dB	52dB	40GbE to 100GbE*
M4MAE24-09B2K1	(3)MPO (M) APC - (1)MPO (M) APC	OS2	24	Ultra	0.70dB	0.35dB	0.35dB	52dB	40GbE to 100GbE*
M4MAE24-50EB3K1	(3)MPO (M) PC - (1)MPO (M) PC	OM4	24	Ultra	0.70dB	0.35dB	0.35dB	17dB	40GbE to 100GbE*
M4MAE24-50EA3K1	(3)MPO (M) PC - (2)MPO (M) PC	OM4	24	Ultra	0.70dB	0.35dB	0.35dB	17dB	40GbE to 100GbE*
M4MAE48-50EA3K1	(6)MPO (M) PC - (4)MPO (M) PC	OM4	48	Ultra	0.70dB	0.35dB	0.35dB	17dB	40GbE to 100GbE*
M4MAE48-50EB3K1	(6)MPO (M) PC - (2)MPO (M) PC	OM4	48	Ultra	0.70dB	0.35dB	0.35dB	17dB	40GbE to 100GbE*
M4MBE48-50EA3K1	(6)MPO (F) PC - (4)MPO (M) PC	OM4	48	Ultra	0.70dB	0.35dB	0.35dB	17dB	40GbE to 100GbE*
M4MAE48-09A2K1	(6)MPO (M) APC - (4)MPO (M) APC	OS2	48	Ultra	0.70dB	0.35dB	0.35dB	52dB	40GbE to 100GbE*
M4MBE48-09B2K1	(6)MPO (M) APC - (2)MPO (M) APC	OS2	48	Ultra	0.70dB	0.35dB	0.35dB	52dB	40GbE to 100GbE*
M4MAE48-09B2K1	(6)MPO (F) APC - (2)MPO (M) APC	OS2	48	Ultra	0.70dB	0.35dB	0.35dB	52dB	40GbE to 100GbE*
M4MAE24-09A3K1	(3)MPO (M) APC - (2)MPO (M) APC	OS2	24	Quantum	0.47dB	0.235dB	0.235dB	52dB	40GbE to 100GbE*
M4MAE24-09B3K1	(3)MPO (M) APC - (1)MPO (M) APC	OS2	24	Quantum	0.47dB	0.235dB	0.235dB	52dB	40GbE to 100GbE*
M4MAE24-50WB4K1	(3)MPO (M) APC - (1)MPO (M) APC	OM5	24	Quantum	0.50dB	0.25dB	0.25dB	37dB	40GbE to 100GbE*
M4MAE24-50WA4K1	(3)MPO (M) APC - (2)MPO (M) APC	OM5	24	Quantum	0.50dB	0.25dB	0.25dB	37dB	40GbE to 100GbE*
M4MAE48-50WA4K1	(6)MPO (M) APC - (4)MPO (M) APC	OM5	48	Quantum	0.50dB	0.25dB	0.25dB	37dB	40GbE to 100GbE*
M4MAE48-50WB4K1	(6)MPO (M) APC - (2)MPO (M) APC	OM5	48	Quantum	0.50dB	0.25dB	0.25dB	37dB	40GbE to 100GbE*
M4MBE48-50WA4K1	(6)MPO (F) APC - (4)MPO (M) APC	OM5	48	Quantum	0.50dB	0.25dB	0.25dB	37dB	40GbE to 100GbE*
M4MAE48-09A3K1	(6)MPO (M) APC - (4)MPO (M) APC	OS2	48	Quantum	0.47dB	0.235dB	0.235dB	52dB	40GbE to 100GbE*
M4MAE48-09B3K1	(6)MPO (M) APC - (2)MPO (M) APC	OS2	48	Quantum	0.47dB	0.235dB	0.235dB	52dB	40GbE to 100GbE*
M4MBE48-09B3K1	(6)MPO (F) APC - (2)MPO (M) APC	OS2	48	Quantum	0.47dB	0.235dB	0.235dB	52dB	40GbE to 100GbE*



# Splice Cassettes

## M4 Splice Cassettes – Premium Solutions

Infinium M4 Splice Cassettes enable industry leading performance, fast field termination, and provide cable management within the housing. The Splice Cassettes are designed for use with Single-Mode (OS2) or Multimode (OM4/OM5) Fiber, Houses 12-24 fibers and are available in LC Duplex or LC Quad port configurations. Compatible with Infinium HD-E Rack Mount Fiber Enclosure with M4 Drawer Face.



ITEM NO.	CONNECTOR STYLE	FIBER TYPE	FIBER COUNT	TIER LEVEL	CONNECTOR INSERTION LOSS (MAX)	CONNECTOR RETURN LOSS (MIN)	SPLICE TYPE
M4LCD12-09S1A1	LC UPC	OS2	12	Core	0.30dB	55dB	Single Fiber
M4LCQ24-09R1A1	LC UPC	OS2	24	Core	0.30dB	55dB	Ribbon Fiber
M4LAD12-09S1A1	LC APC	OS2	12	Core	0.40dB	65dB	Single Fiber
M4LAQ24-09R1A1	LC APC	OS2	24	Core	0.40dB	65dB	Ribbon Fiber
M4SCD12-09S1A1	SC UPC	OS2	12	Core	0.30dB	55dB	Single Fiber
M4SAD12-09S1A1	SC APC	OS2	12	Core	0.40dB	65dB	Single Fiber
M4LAD12-09R1A1	LC APC	OS2	12	Core	0.40dB	65dB	Ribbon Fiber
M4LAQ24-09S1A1	LC APC	OS2	24	Core	0.40dB	65dB	Single Fiber
M4LCD12-09R1A1	LC UPC	OS2	12	Core	0.30dB	55dB	Ribbon Fiber
M4LCD12-50ER1A1	LC PC	OM4	12	Core	0.50dB	26dB	Ribbon Fiber
M4LCQ24-09S1A1	LC UPC	OS2	24	Core	0.30dB	55dB	Single Fiber
M4LCQ24-50ES1A1	LC PC	OM4	24	Core	0.50dB	26dB	Single Fiber
M4SAD12-09R1A1	SC APC	OS2	12	Core	0.40dB	65dB	Ribbon Fiber
M4SCD12-09R1A1	SC UPC	OS2	12	Core	0.30dB	55dB	Ribbon Fiber
M4SCD12-50ER1A1	SC PC	OM4	12	Core	0.50dB	26dB	Ribbon Fiber
M4LCD12-50ES3A1	LC PC	OM4	12	Ultra	0.15dB	26dB	Single Fiber
M4LCQ24-50ER3A1	LC PC	OM4	24	Ultra	0.15dB	26dB	Ribbon Fiber
M4SCD12-50ES3A1	SC PC	OM4	12	Ultra	0.15dB	26dB	Single Fiber
M4LCD12-50ER3A1	LC PC	OM4	12	Ultra	0.15dB	26dB	Ribbon Fiber
M4LCQ24-50ES3A1	LC PC	OM4	24	Ultra	0.15dB	26dB	Single Fiber
M4SCD12-50ER3A1	SC PC	OM4	12	Ultra	0.15dB	26dB	Ribbon Fiber
M4LCD12-09R2A1	LC UPC	OS2	12	Ultra	0.25dB	55dB	Ribbon Fiber
M4LCD12-09S2A1	LC UPC	OS2	12	Ultra	0.25dB	55dB	Single Fiber
M4LCQ24-09R2A1	LC UPC	OS2	24	Ultra	0.25dB	55dB	Ribbon Fiber
M4LCQ24-09S2A1	LC UPC	OS2	24	Ultra	0.25dB	55dB	Single Fiber
M4LCD12-50ER4A1	LC PC	OM4	12	Quantum	0.10dB	40dB	Ribbon Fiber
M4LCD12-50ES4A1	LC PC	OM4	12	Quantum	0.10dB	40dB	Single Fiber
M4LCD12-50WR4A1	LC PC	OM5	12	Quantum	0.10dB	40dB	Ribbon Fiber
M4LCD12-50WS4A1	LC PC	OM5	12	Quantum	0.10dB	40dB	Single Fiber
M4LCQ24-50ER4A1	LC PC	OM4	24	Quantum	0.10dB	40dB	Ribbon Fiber
M4LCQ24-50ES4A1	LC PC	OM4	24	Quantum	0.10dB	40dB	Single Fiber
M4LCQ24-50WR4A1	LC PC	OM5	24	Quantum	0.10dB	40dB	Ribbon Fiber
M4LCQ24-50WS4A1	LC PC	OM5	24	Quantum	0.10dB	40dB	Single Fiber
M4SCD12-50ER4A1	SC PC	OM4	12	Quantum	0.10dB	40dB	Ribbon Fiber
M4SCD12-50WR4A1	SC PC	OM5	12	Quantum	0.10dB	40dB	Ribbon Fiber
M4LCD12-09R3A1	LC PC	OS2	12	Quantum	0.14dB	55dB	Ribbon Fiber
M4LCD12-09S3A1	LC PC	OS2	12	Quantum	0.14dB	55dB	Single Fiber
M4LCQ24-09S3A1	LC PC	OS2	24	Quantum	0.14dB	55dB	Single Fiber
M4LCQ24-09R3A1	LC PC	OS2	24	Quantum	0.14dB	55dB	Ribbon Fiber

# Trunk Cables

## Infinium Fiber Trunk Cable Assembly Configurator

CONCATENATED PART NO.	PERFORMANCE LEVEL	CONN. A	CONN. B	POLARITY	CABLE TYPE	CABLE VENDOR	FIBER COUNT	FIBER TYPE	BREAK-OUT A	BREAK-OUT B	OPTIONS	LENGTH	UNIT OF MEASURE
Q8686B37S7QMM2125F	Q	86	86	B	37	S	7	Q	M	M	2	125	F

**Performance Level**

Q - Quantum  
U - Ultra  
C - Core

**CONNECTORS A & B SIDE**

**acclA/M Connectors**  
AM - SM or MM Octal Ferrule

**Quantum Performance (MTP)**  
70 - SM Pinned  
71 - SM Non-Pinned  
85 - SM PRO Pinned  
86 - SM PRO Non-Pinned  
1E - MM APC Non-Pinned  
1U - MM PRO APC Pinned  
1V - MM PRO APC Non-Pinned  
41A - MM APC Pinned

**LC Connectors**  
01 - LC (Core, Ultra, Quantum MM)  
35 - LC (Quantum SM)

**Core Performance (MTP)**  
46 - MM Pinned  
47 - MM Non-Pinned  
62 - SM Pinned  
63 - SM Non-Pinned  
1G - MM PRO Pinned  
1H - MM PRO Non-Pinned  
1N - SM PRO Pinned  
1P - SM PRO Non-Pinned

**Ultra Performance (MTP)**  
54 - MM Pinned  
55 - MM Non-Pinned  
70 - SM Pinned  
71 - SM Non-Pinned  
83 - MM PRO Pinned  
84 - MM PRO Non-Pinned  
85 - SM PRO Pinned  
86 - SM PRO Non-Pinned

**Polarity**

0 - LC Non-Clipped  
2 - LC Clipped A-B  
B - Type B: 1-1  
C - Type C: 1-1

**Cable Type**

10 - 3.0mm (Above 12F)  
37 - 3.0mm (12F or Less)  
63 - 2.0mm (Base-8)  
67 - 3.0mm, LSZH, 12F  
68 - 2.0mm, LSZH, 12F  
Other types available

**Cable Vendor**

0 - Non-Specific  
S - Superior Essex  
D - Draka/Prysmian (LSZH)

**Fiber Count**

5 - 8F  
7 - 12F  
A - 24F  
E - 48F  
Other counts available

**Options**

1 - Spool only  
2 - Spool, Pulling Eye, No Labels  
8 - Spool, Pulling Eye, Labels  
More options available for Pulling Eye and Labeling  
'Unspooled' Options Available

**Length**

xxx - Must be 3 Digits

**Unit of Measure**

F - Feet    M - Meters

**Breakouts (Sides A & B)**

E - LC No Stagger  
F - LC Standard Stagger  
M - MTP No Stagger  
N - MTP Standard Stagger

### Instructions

Use the applicable feature tables, select the appropriate designation code and apply to the coordinating cell in the configurator.

**Please Note:** With hundreds of configuration options, this table has been condensed to the most common choices to simplify the trunk assembly configuration process, there are various rules for trunk construction that may be applied, forcing a change to the part number.

If you require other configuration options or assistance with designing the appropriate trunk for your application, please contact Legrand support.

Phone number **1.800.934.5432** Email **customerservice.DAT@legrand.us**

### Pre-Configured Trunk Examples

PART NO.	DESCRIPTION
Q7171B10S7QMM8125F	Infinium Quantum, 125ft, 12F MTP to MTP (Non-Pinned, No Stagger), Plenum OS2, Type B:1-1 Polarity, Spool, PE-A, Label-A
Q1E1EB10S7EMM8125F	Infinium Quantum, 125ft, 12F MTP to MTP (Non-Pinned, No Stagger), Plenum OM4, Type B:1-1 Polarity, Spool, PE-A, Label-A
U5555B10S7EMM8125F	Infinium Ultra, 125ft, 12F MTP to MTP (Non-Pinned, No Stagger), Plenum OM4, Type B:1-1 Polarity, Spool, PE-A, Label-A
U6363B10S7JMM8125F	Infinium Ultra, 125ft, 12F MTP to MTP (Non-Pinned, No Stagger), Plenum OS2, Type B:1-1 Polarity, Spool, PE-A, Label-A
C4747B10S7EMM8125F	Infinium Core, 125ft, 12F MTP to MTP (Non-Pinned, No Stagger), Plenum OM4, Type B:1-1 Polarity, Spool, PE-A, Label-A
C6363B10S7JMM8125F	Infinium Core, 125ft, 12F MTP to MTP (Non-Pinned, No Stagger), Plenum OS2, Type B:1-1 Polarity, Spool, PE-A, Label-A

## Infinium Fiber Patch Cord Assembly Configurator

CONCATENATED PART NO.	PERFORMANCE LEVEL	CONN. A	CONN. B	POLARITY	CABLE DIAMETER	FIBER TYPE	JACKET COLOR	JACKET TYPE	PACKAGING	LENGTH	UNIT OF MEASURE
L1-0101B2QY21010F	L1	01	01	B	2	Q	Y	2	1	010	F
<b>Performance Level</b> L1 - Core L3 - Ultra L4 - Quantum		<b>CONN. (Connectors)</b> 01 - LC Duplex 02 - SC 35 - SM Quantum LC Duplex 80 - LC Uniboot 2M - SM Quantum LC Uniboot		<b>Cable Diameter</b> 2 - 2.0mm 3 - 3.0mm		<b>Jacket Color</b> A - Aqua Y - Yellow		<b>Packaging</b> 0 - No Test Result (Core) 1 - Test Result (Ultra/Quantum)		<b>Unit of Measure</b> F - Feet M - Meters	
		<b>Polarity</b> A - A-A (Clipped) B - A-B (Clipped) <i>Standard</i>		<b>Fiber Type</b> E - OM4 H - OM5 J - OS2 Q - OS2 Quantum		<b>Jacket Type</b> 2 - Riser Duplex Zip B - Plenum Duplex DFX (Uniboot) D - Plenum Duplex Zip E - LSZH Duplex Zip L - LSZH Duplex DFX (Uniboot)					

### Instructions

Use the applicable feature tables, select the appropriate designation code and apply to the coordinating cell in the configurator.

**Please Note:** With hundreds of configuration options, this table has been condensed to the most common choices to simplify the patch cable assembly configuration process. If you require other configuration options or assistance with designing the appropriate patch cable assembly for your application, please contact Legrand support.

Phone number **1.800.934.5432** Email **customerservice.DAT@legrand.us**

# Infinium Core Single-Mode Patch Cables

## Pre-Configured Infinium Core Single-Mode Patch Cable Assemblies

**Individual Patch Cable Assembly - Standard Insertion Loss:** 0.30 dB Insertion loss

**Part of a Standard Loss System:** When combined with Infinium Core Trunks and Infinium Core Cassettes

- Single-mode total channel connection loss: 2.1 dB
- Single-mode total channel connection return loss: 40 dB

**Cable Size:** All configurations below are 2mm duplex zipcord - other configuration options available

**Fiber Type:** Supports Single-Mode OS2 Fiber

**Polarization:** A-B and is designed to pair with Infinium Universal Polarity Cassettes - Reconfigurable

**Jacket Color:** Yellow - other configuration options available

**Compliance:** BAA or TAA

PART NO.	DESCRIPTION	FIBER TYPE	POLARITY	FORM FACTOR	JACKET TYPE	LENGTH	UOM	INSERTION LOSS (MAX)
L1-0101B2JYD0005F	Infinium Core, LC to LC	OS2	A-B	Duplex	Plenum	5	Feet	0.30 dB
L1-0101B2JYD0010F	Infinium Core, LC to LC	OS2	A-B	Duplex	Plenum	10	Feet	0.30 dB
L1-0102B2JYD0001F	Infinium Core, LC to SC	OS2	A-B	Duplex	Plenum	1	Feet	0.30 dB
L1-0102B2JYD0002F	Infinium Core, LC to SC	OS2	A-B	Duplex	Plenum	2	Feet	0.30 dB
L1-0102B2JYD0003F	Infinium Core, LC to SC	OS2	A-B	Duplex	Plenum	3	Feet	0.30 dB
L1-0101B2JYD0001M	Infinium Core, LC to LC	OS2	A-B	Duplex	Plenum	1	Meters	0.30 dB
L1-0101B2JYD0002M	Infinium Core, LC to LC	OS2	A-B	Duplex	Plenum	2	Meters	0.30 dB
L1-0101B2JYD0003M	Infinium Core, LC to LC	OS2	A-B	Duplex	Plenum	3	Meters	0.30 dB
L1-0102B2JYD0001M	Infinium Core, LC to SC	OS2	A-B	Duplex	Plenum	1	Meters	0.30 dB
L1-0102B2JYD0002M	Infinium Core, LC to SC	OS2	A-B	Duplex	Plenum	2	Meters	0.30 dB
L1-0102B2JYD0003M	Infinium Core, LC to SC	OS2	A-B	Duplex	Plenum	3	Meters	0.30 dB
L1-802JB2JYB0005F	Infinium Core, LC Uniboot to MDC	OS2	A-B	Duplex DFX	Plenum	5	Feet	0.30 dB
L1-802JB2JYB0010F	Infinium Core, LC Uniboot to MDC	OS2	A-B	Duplex DFX	Plenum	10	Feet	0.30 dB
L1-802JB2JYB0001M	Infinium Core, LC Uniboot to MDC	OS2	A-B	Duplex DFX	Plenum	1	Meters	0.30 dB
L1-802JB2JYB0002M	Infinium Core, LC Uniboot to MDC	OS2	A-B	Duplex DFX	Plenum	2	Meters	0.30 dB
L1-802JB2JYB0003M	Infinium Core, LC Uniboot to MDC	OS2	A-B	Duplex DFX	Plenum	3	Meters	0.30 dB



# Infinium Core Multimode Patch Cables

## Pre-Configured Infinium Core Multimode Patch Cable Assemblies

**Individual Patch Cable Assembly – Standard Insertion Loss:** 0.50 dB Insertion loss

**Part of a Standard Loss System:** When combined with Infinium Core Trunks and Infinium Core Cassettes

- Multimode total channel connection loss: 2.5 dB
- Multimode total channel connection return loss: 16 dB

**Cable Size:** All configurations below are 2mm duplex zipcord - other configuration options available

**Fiber Type:** Supports Multimode OM4 Fiber – other configuration options available

**Polarization:** A-B and is designed to pair with Infinium Universal Polarity Cassettes – Reconfigurable

**Jacket Color:** Aqua - other configuration options available

**Compliance:** BAA or TAA

PART NO.	DESCRIPTION	FIBER TYPE	POLARITY	FORM FACTOR	JACKET TYPE	LENGTH	UOM	INSERTION LOSS (MAX)
L1-0101B2EAD0005F	Infinium Core, LC to LC	OM4	A-B	Duplex	Plenum	5	Feet	0.50 dB
L1-0101B2EAD0010F	Infinium Core, LC to LC	OM4	A-B	Duplex	Plenum	10	Feet	0.50 dB
L1-0102B2EAD0001F	Infinium Core, LC to SC	OM4	A-B	Duplex	Plenum	1	Feet	0.50 dB
L1-0102B2EAD0002F	Infinium Core, LC to SC	OM4	A-B	Duplex	Plenum	2	Feet	0.50 dB
L1-0102B2EAD0003F	Infinium Core, LC to SC	OM4	A-B	Duplex	Plenum	3	Feet	0.50 dB
L1-0101B2EAD0001M	Infinium Core, LC to LC	OM4	A-B	Duplex	Plenum	1	Meters	0.50 dB
L1-0101B2EAD0002M	Infinium Core, LC to LC	OM4	A-B	Duplex	Plenum	2	Meters	0.50 dB
L1-0101B2EAD0003M	Infinium Core, LC to LC	OM4	A-B	Duplex	Plenum	3	Meters	0.50 dB
L1-0102B2EAD0001M	Infinium Core, LC to SC	OM4	A-B	Duplex	Plenum	1	Meters	0.50 dB
L1-0102B2EAD0002M	Infinium Core, LC to SC	OM4	A-B	Duplex	Plenum	2	Meters	0.50 dB
L1-0102B2EAD0003M	Infinium Core, LC to LC	OM4	A-B	Duplex	Plenum	3	Meters	0.50 dB
L1-802JB2EAB0005F	Infinium Core, LC Uniboot to MDC	OM4	A-B	Duplex DFX	Plenum	5	Feet	0.50 dB
L1-802JB2EAB0010F	Infinium Core, LC Uniboot to MDC	OM4	A-B	Duplex DFX	Plenum	10	Feet	0.50 dB
L1-802JB2EAB0001M	Infinium Core, LC Uniboot to MDC	OM4	A-B	Duplex DFX	Plenum	1	Meters	0.50 dB
L1-802JB2EAB0002M	Infinium Core, LC Uniboot to MDC	OM4	A-B	Duplex DFX	Plenum	2	Meters	0.50 dB
L1-802JB2EAB0003M	Infinium Core, LC Uniboot to MDC	OM4	A-B	Duplex DFX	Plenum	3	Meters	0.50 dB

# Fusion Splice-On Connectors



## Infinium Fusion Splice-On Connectors – Premium Solutions

The fusion splicing method for Infinium fusion splice-on connectors is accomplished by fusing the field fiber to the factory-cleaved fiber stub to ensure ease of use and optimal performance. The unique boot allows the entire splice to be concealed and protected. The 3mm connectors have the addition of an extended brass crimp sleeve that provides extra protection to the splice and utilizes the Kevlar® for maximized pull strength.

PART NO.	STYLE	FIBER TYPE	JACKET SIZE	HOUSING COLOR	BOOT COLOR	PACK COLOR
205KNF9GA-62	LC	Multimode (OM1)	900µm	Beige	Beige	1
205KNF9FA-62	SC	Multimode (OM1)	900µm	Beige	Beige	1
205KNF9EA-62	ST	Multimode (OM1)	900µm	Metallic	Beige	1
205KNF9GA-50T	LC	Multimode (OM3/OM4)	900µm	Beige	Aqua	1
205KNF9FA-50T	SC	Multimode (OM3/OM4)	900µm	Beige	Aqua	1
205KNF9EA-50T	ST	Multimode (OM3/OM4)	900µm	Metallic	Aqua	1
205KNF9GA-50E	LC	Multimode (OM4)	900µm	Beige	Magenta	1
205KNF9FA-50E	SC	Multimode (OM4)	900µm	Beige	Magenta	1
205KNF9GA-50W	LC	Multimode (OM5)	900µm	Lime	Lime	1
205KNF9SA-09	LC	Single-Mode (OS2)	900µm	Blue	White	1
205KNF9RA-09	SC	Single-Mode (OS2)	900µm	Blue	White	1
205KNF9QA-09	ST	Single-Mode (OS2)	900µm	Metallic	White	1
205KNF9MA-09	LC APC	Single-Mode (OS2)	900µm	Green	Green	1
205KNF9LA-09	SC APC	Single-Mode (OS2)	900µm	Green	Green	1
205KNF3GA-62	LC	Multimode (OM1)	3.0 mm	Beige	Beige	1
205KNF3FA-62	SC	Multimode (OM1)	3.0 mm	Beige	Beige	1
205KNF3EA-62	ST	Multimode (OM1)	3.0 mm	Metallic	Beige	1
205KNF3GA-50T	LC	Multimode (OM3/OM4)	3.0 mm	Beige	Aqua	1
205KNF3FA-50T	SC	Multimode (OM3/OM4)	3.0 mm	Beige	Aqua	1
205KNF3EA-50T	ST	Multimode (OM3/OM4)	3.0 mm	Metallic	Aqua	1
205KNF3GA-50E	LC	Multimode (OM4)	3.0 mm	Magenta	Magenta	1
205KNF3FA-50E	SC	Multimode (OM4)	3.0 mm	Magenta	Magenta	1
205KNF3GA-50W	LC	Multimode (OM5)	3.0 mm	Lime	Lime	1
205KNF3SA-09	LC	Single-Mode (OS2)	3.0 mm	Blue	White	1
205KNF3RA-09	SC	Single-Mode (OS2)	3.0 mm	Blue	White	1
205KNF3QA-09	ST	Single-Mode (OS2)	3.0 mm	Metallic	White	1
205KNF3MA-09	LC APC	Single-Mode (OS2)	3.0 mm	Green	Green	1
205KNF3LA-09	SC APC	Single-Mode (OS2)	3.0 mm	Green	Green	1



205KNF9SA-09



205KNF3GA-50E

# Mighty Mo 20

## Mighty Mo 20 Channel Racks

Mighty Mo 20 channel racks are designed to provide greater flexibility and optimum efficiency to any size network. The top trough with built-in waterfall provides bend radius control and efficient patch cable routing. Honeycomb side rails on all depth channel racks provide the ultimate in distribution cable management. The honeycomb side rails, combined with airflow baffles, create a patented system that manages intake and exhaust air from side-vented equipment.

PART NO.	RACK UNIT	CHANNEL DEPTH	RAIL TYPE
MM20706-X	45 RU (7 ft)	6.5 in	Tapped #12-24
MM20710-X	45 RU (7 ft)	10.5 in	Tapped #12-24
MM20716-X	45 RU (7 ft)	16.25 in	Tapped #12-24
MM20724-X	45 RU (7 ft)	24 in	Tapped #12-24
MM2072438-X	45 RU (7 ft)	24 in	Punched, 3/8 in Square
MM20730-X	45 RU (7 ft)	30 in	Tapped #12-24
MM2073038-X	45 RU (7 ft)	30 in	Punched, 3/8 in Square
MM20810-X	51 RU (8 ft)	10.5 in	Tapped #12-24
MM20816-X	51 RU (8 ft)	16.25 in	Tapped, #12-24
MM20824-X	51 RU (8 ft)	24 in	Tapped #12-24
MM2082438-X	51 RU (8 ft)	24 in	Punched, 3/8 in Square
MM20830-X	51 RU (8 ft)	30 in	Tapped #12-24
MM2083038-X	51 RU (8 ft)	30 in	Punched, 3/8 in Square

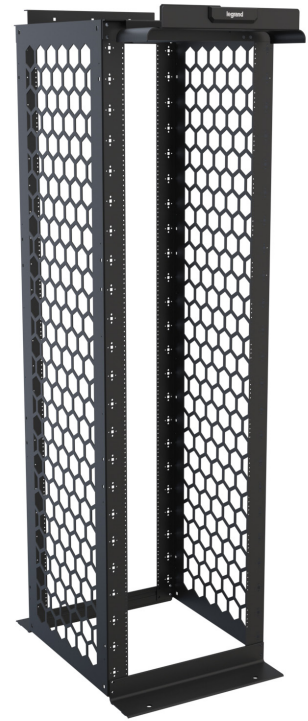
NOTE: For color, replace X with B (Black) or W (White).  
Patent numbers: 8,130,494 and 8,256,181 and D803,789

## Mighty Mo 20 Dual Adjustable Base 4-Post Racks

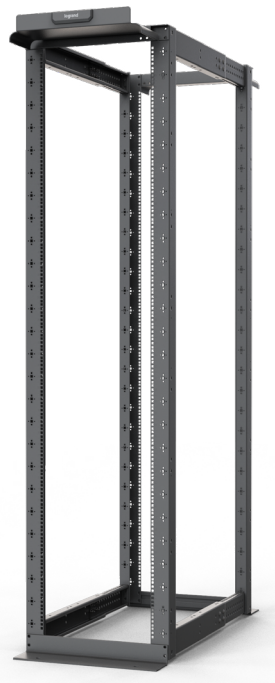
Mighty Mo 20 Dual Adjustable Base 4-post racks provide greater flexibility and optimum efficiency in any data center or telecom room. The base angles adjust in depth with the rails reducing the overall foot print when the rail spacing is reduced. Front and rear waterfalls allow for equipment patching and server patching. All styles of Mighty Mo 20 vertical managers can be mounted to the front or rear.

PART NO.	RACK UNIT	RAIL SPACING	RAIL TYPE
MM2072132DAB12-X	45	21 in - 32 in	Tapped #12-24
MM2072132DAB38-X	45	21 in - 32 in	Punched, 3/8 in Square
MM2073142DAB12-X	45	31 in - 42 in	Tapped #12-24
MM2073142DAB38-X	45	31 in - 42 in	Punched, 3/8 in Square
MM2082132DAB12-X	51	21 in - 32 in	Tapped #12-24
MM2082132DAB38-X	51	21 in - 32 in	Punched, 3/8 in Square
MM2083142DAB12-X	51	31 in - 42 in	Tapped #12-24
MM2083142DAB38-X	51	31 in - 42 in	Punched, 3/8 in Square

NOTE: For colors replace X with B (Black), W (White).  
Patent Numbers: 8,130,494 and 8,256,181



MM20724-B



MM2072132DAB38-B

# Mighty Mo 20

## Mighty Mo 20 Fixed 4-Post Racks

Mighty Mo 20 4-post racks provide greater flexibility and optimum efficiency in any data center. The fixed racks provide an economical mounting platform for switches and servers. Front and rear waterfalls allow for equipment patching and server patching. All styles of Mighty Mo 20 vertical managers can be mounted front or rear and airflow baffles can be mounted to manage the airflow of side breathing equipment.

PART NO.	RACK UNIT	RAIL SPACING	RAIL TYPE
MM20730FXD12-X	45RU (7 ft)	30 in	Tapped, #12-24
MM20730FXD38-X	45RU (7 ft)	30 in	Punched, 3/8 in Square
MM20830FXD12-X	51RU (8 ft)	30 in	Tapped, #12-24
MM20830FXD38-X	51RU (8 ft)	30 in	Punched, 3/8 in Square

NOTE: For color, replace X with B (Black) or W (White)  
Patent numbers: 8,130,494 and 8,256,181

## Mighty Mo 20 Vertical Cable Management Panels

MM20 Vertical Cable Management Panels provide an efficient way to manage rack cabling and can be mounted to MM20 in DAB and FXD 4-post racks. The unique honeycomb design allows for proper cable routing and cable bend radius control. The panels hex pattern will accept MM20 universal cable troughs, cable disks and hexguard cable protectors.

PART NO.	DESCRIPTION
MM207VCMP-X	MM20 Vertical Cable Management Panel, 7 ft
MM208VCMP-X	MM20 Vertical Cable Management Panel, 8 ft

NOTE: For colors replace X with B (Black), W (White).



MM20730FXD12-B



MM207VCMP-B



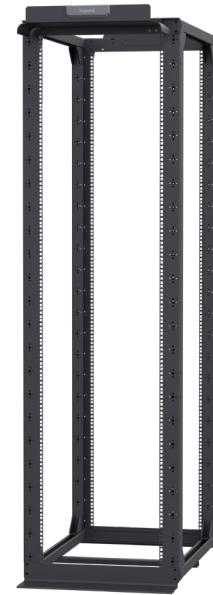
# Mighty Mo 20

## Mighty Mo 20 Adjustable 4-Post Racks

Mighty Mo 20 4-post racks provide greater flexibility and optimum efficiency in any data center. The adjustable rack allows all 4 mounting rails to be adjusted even after the rack has been fastened to the floor. Front and rear waterfalls allow for equipment patching and server patching. All styles of Mighty Mo 20 vertical managers can be mounted front or rear and airflow baffles can be mounted to manage the airflow of side breathing equipment.

PART NO.	RACK UNIT	MAXIMUM RAIL SPACING	RAIL TYPE
MM20730ADJ12-X	45 RU (7 ft)	30 in	Tapped, #12-24
MM20730ADJ38-X	45 RU (7 ft)	30 in	Punched, 3/8 in Square
MM20736ADJ12-X	45 RU (7 ft)	36 in	Tapped, #12-24
MM20736ADJ38-X	45 RU (7 ft)	36 in	Punched, 3/8 in Square
MM20742ADJ12-X	45 RU (7 ft)	42 in	Tapped, #12-24
MM20742ADJ38-X	45 RU (7 ft)	42 in	Punched, 3/8 in Square
MM20830ADJ12-X	51 RU (8 ft)	30 in	Tapped, #12-24
MM20830ADJ38-X	51 RU (8 ft)	30 in	Punched, 3/8 in Square
MM20836ADJ12-X	51 RU (8 ft)	36 in	Tapped, #12-24
MM20836ADJ38-X	51 RU (8 ft)	36 in	Punched, 3/8 in Square
MM20842ADJ12-X	51 RU (8 ft)	42 in	Tapped, #12-24
MM20842ADJ38-X	51 RU (8 ft)	42 in	Punched, 3/8 in Square

NOTE: For color, replace X with B (Black) or W (White).  
Patent numbers: 8,130,494 and 8,256,181



MM20736ADJ38-B

## Mighty Mo 20 Horizontal Managers

Horizontal cable managers are available in 2RU and 4RU sizes. Fingers begin 3/4 in from the face of rack to provide bend limitation for cables, protecting cables, equipment and network performance. Included hinged cover mounts with six heavy duty clips allow them to be opened one handed without becoming "unhinged". Manufactured from UL94V-0 rated plastic.

PART NO.	DESCRIPTION
MM20HMF2RU-X	2 RU Single-Sided Horizontal Manager
MM20HMF4RU-X	4 RU Single-Sided Horizontal Manager

NOTE: For color, replace X with B (Black) or W (White)

Patent Number: 9,429,252

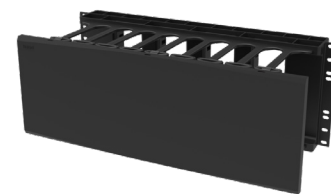


MM20HMF2RU-B

## Standard EIA Horizontal Managers

Horizontal cable managers are available in 1RU, 2RU, 3RU, and 4RU sizes. Fingers begin 3/4 in from the face of rack to provide bend limitation for cables, protecting cables, equipment and network performance. Included hinged cover mounts with six heavy duty clips allow them to be opened one handed without becoming "unhinged". Manufactured from UL94V-0 rated plastic.

PART NO.	SIDED TYPE	MANAGEMENT TYPE	HEIGHT (RU)	W MAXIMUM FILL CAPACITY (.250 DIA. CABLES)
SHMC1RU	Single	Multiple Fingers	1	26
SHMC2RU			2	91
SHMC3RU			3	155
SHMC4RU			4	219



SHMC4RU

NOTE: Standard finish is Black, add W to the end of the Part Number for a White finish

# Mighty Mo 20

## Mighty Mo 20 Vertical Manager with Door

The wire frame and rack unit finger design promotes efficient routing of patch cords between racks. Dual hinged slam latch doors allow easy access during moves, adds and changes. Supplied with four cable management spools to provide slack storage for fiber jumpers and twelve bend limiting clips to protect fiber entering the vertical manager.

PART NO.	DESCRIPTION
MM20VMD706-X	6.5 in W x 10.25 in D for 7 ft MM20 racks
MM20VMD710-X	10.5 in W x 15 in D for 7 ft MM20 racks
MM20VMD712-X	12.25 in W x 15 in D for 7 ft MM20 racks
MM20VMD806-X	6.5 in W x 10.25 in D for 8 ft MM20 racks
MM20VMD810-X	10.5 in W x 15 in D for 8 ft MM20 racks
MM20VMD812-X	12.25 in W x 15 in D for 8 ft MM20 racks

NOTE: For color, replace X with B (Black) or W (White).  
06 (6.5) in wide managers are 10.25 in deep. All other managers are 15 in deep.  
Patent number: 9,303,440



MM20VMD710-B

## Mighty Mo 20 Universal Cable Troughs

Universal cable troughs snap into the hex pattern on the Mighty Mo 20 channel racks and are used to create a front to rear or vertical trough on the inside or outside of the channel. They can be mounted in a row to create a continuous trough or rotated at 30° increments to support cables through directional changes. Up to 3 HiLOC™ harnesses can be toollessly mounted into each trough.

PART NO.	DESCRIPTION
MM20UCT2X2-B	2 in x 2 in x 5.25 in Trough with Hex Mounting For MM20 Channel Racks, 6-Pack - Black
MM20UCT2X2-W	2 in x 2 in x 5.25 in Trough with Hex Mounting For MM20 Channel Racks, 6-Pack - White

NOTE: Patent Number: 9,429,252



MM20UCT2X2-B

## Mighty Mo 20 Bending Limiting Clips

Bend limiting clips snap on to any finger on the vertical management cage to provide bend limitation for fiber jumpers entering and exiting the cage. The half oval design provides 180° protection for fiber jumpers.

PART NO.	DESCRIPTION
MM20BLC-B	Mighty Mo 20 BEND LIMITING CLIP 6.25 in L, 12 Pack - Black (For VMD or VMS Style Managers)
MM20BLC-W	Mighty Mo 20 BEND LIMITING CLIP 6.25 in L, 12 Pack - White (For VMD or VMS Style Managers)



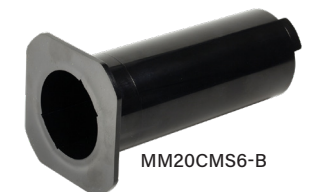
MM20BLC-B

## Mighty Mo 20 Cable Management Spools

Cable management spools effectively manage excess fiber cable slack, providing flexibility and the proper bend radius for cables. They mount at rack unit intervals on the front of the 6 in wide vertical manager or on the front and rear of the 10 in and wider vertical managers with fingers.

PART NO.	DESCRIPTION
MM20CMS6-X	Mighty Mo 20 Cable Management Spool 6.25 in W, 12 Pack Set of 4 (For VMD or VMS Style Managers)
MM20CMS10-X	Mighty Mo 20 Cable Management Spool 10in W, 12 Pack Set of 4 (For VMD or VMS Style Managers)

NOTE: For colors replace X with B (Black), W (White)



MM20CMS6-B

# Mighty Mo 20

## Tool-Less Filler Panels

Tool-less snap-in filler panels are used to fill open rack units in racks and cabinets where separation of cold air and hot air is required. They are designed to work with active equipment and flat or angled patch panels. The tool-less snap-in filler panels unique patented design allows them to snap into 19 in EIA/ECA-310-E compliant tapped or square hole mounting rails. Because no field modification is required to fit a tapped hole, the panel can be remounted in a square hole in the future eliminating the need to stock two different types of panels. Available in black and white.

PART NO.	DESCRIPTION
BFPT-1RU-10	Tool-Less Snap-In Filler Panels - 1 RU, 19 in Wide - 10 pcs
BFPT-2RU-10	Tool-Less Snap-In Filler Panels - 2 RU, 19 in Wide - 10 pcs

NOTE: Standard finish is Black, add -W to the end of the Part Number for a White finish.  
Patent number: 8,955,693



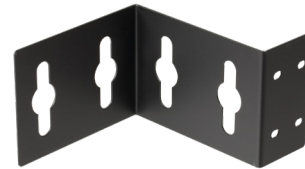
BFPT-2RU-10

## Mighty Mo 20 PDU Mounting Brackets

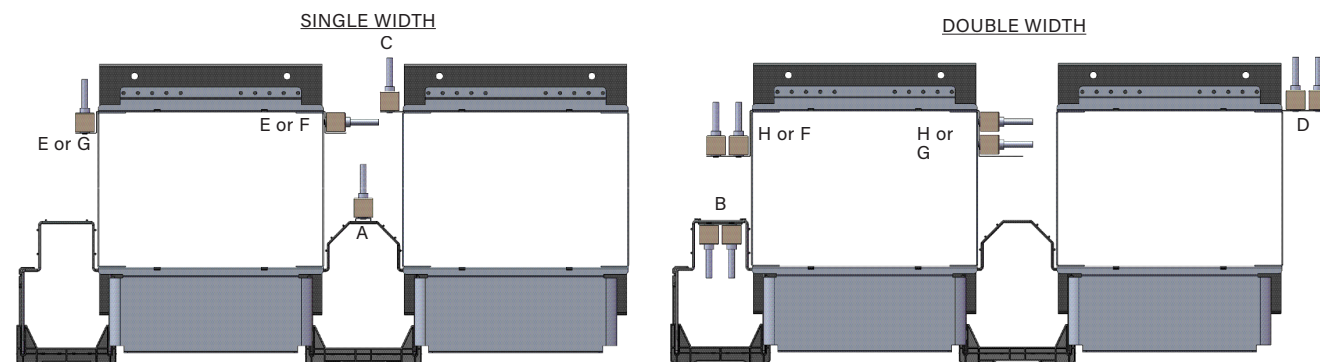
Legrand Mighty Mo 20 PDU mounting bracket kits are designed to mount "Button Mount" PDUs to the VMD style vertical managers or rear channels of the Mighty Mo 20 open racks. Offset, Flat and vertical manager style brackets are available, which provide multiple mounting options.

PART NO.	DESCRIPTION	LOCATION
MM20PDUMBVM1W-X	Cage Mount, 1 Wide	A
MM20PDUMBVM2W-X	Cage Mount, 2 Wide	B
MM20PDUMBFT1W-X	Rack Mount, Flat, 1 Wide	C
MM20PDUMBFT2W-X	Rack Mount, Flat, 2 Wide	D
MM20PDUMB1D1W-X	Rack Mount, 1 Deep, 1 Wide	E
MM20PDUMB1D2W-X	Rack Mount, 1 Deep, 2 Wide	F
MM20PDUMB2D1W-X	Rack Mount, 2 Deep, 1 Wide	G
MM20PDUMB2D2W-X	Rack Mount, 2 Deep, 2 Wide	H

NOTE: For colors replace X with B (Black), W (White).



MM20PDUMB2D2W-B



# Overhead Cable Pathway Racks



The Mighty Mo Overhead cable Pathway Rack simplifies above rack cable management by adding RU space for patch panels without taking up any additional floor space. The racks can be easily installed in several orientations using threaded rods suspended from the ceiling or by being attached to existing overhead cable pathway systems from Legrand, including Cablofil® wire mesh tray and tubular runway.

The Mighty Mo overhead cable pathway rack features up to eight rack units and a snap-fit 3-piece plastic waterfall which allows for exceptional cable egress down to adjacent racks or cabinets. Manufactured from a welded steel frame, the rugged overhead rack is ready to install right out of the box, perfect for new builds or retrofits in data centers and telecom rooms.

## Mighty Mo Overhead Cable Pathway Racks

The Mighty Mo® cable pathway rack series is available in RU increments from 2RU through 8RU, and in both black and white.

PART NO.	DESCRIPTION	RU
MMOHR-2RU-X	Mighty Mo Overhead Cable Pathway Rack, 2RU	2
MMOHR-3RU-X	Mighty Mo Overhead Cable Pathway Rack, 3RU	3
MMOHR-4RU-X	Mighty Mo Overhead Cable Pathway Rack, 4RU	4
MMOHR-5RU-X	Mighty Mo Overhead Cable Pathway Rack, 5RU	5
MMOHR-6RU-X	Mighty Mo Overhead Cable Pathway Rack, 6RU	6
MMOHR-7RU-X	Mighty Mo Overhead Cable Pathway Rack, 7RU	7
MMOHR-8RU-X	Mighty Mo Overhead Cable Pathway Rack, 8RU	8

NOTE: For color, replace X with B (Black), W (White).



MMOHR-2RU-W  
CABLOFIL MOUNTED



MMOHR-6RU-B  
TUBULAR RUNWAY  
MOUNTED



MMOHR-6RU-W  
THREADED ROD  
MOUNTED



# Overhead Cable Pathway Racks

## Q-Series Overhead Cable Pathway Racks

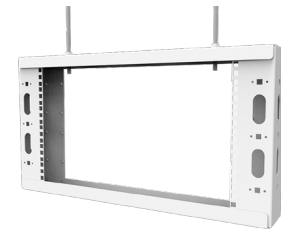
The Q-Series cable pathway rack series is available in RU increments from 2RU through 8RU, and in both black and white.



QSOHR-6RU-W  
CABLOFIL MOUNTED



QSOHR-5RU-B  
TUBULAR RUNWAY MOUNTED



QSOHR-6RU-W  
THREADED ROD MOUNTED

PART NO.	DESCRIPTION	RU
QSOHR-2RU-X	Q-Series Overhead Cable Pathway Rack, 2RU	2
QSOHR-3RU-X	Q-Series Overhead Cable Pathway Rack, 3RU	3
QSOHR-4RU-X	Q-Series Overhead Cable Pathway Rack, 4RU	4
QSOHR-5RU-X	Q-Series Overhead Cable Pathway Rack, 5RU	5
QSOHR-6RU-X	Q-Series Overhead Cable Pathway Rack, 6RU	6
QSOHR-7RU-X	Q-Series Overhead Cable Pathway Rack, 7RU	7
QSOHR-8RU-X	Q-Series Overhead Cable Pathway Rack, 8RU	8

NOTE: For color, replace X with B (Black), W (White).

## Q-Series Overhead Cable Pathway Racks Accessories

PART NO.	DESCRIPTION
QSOHR-RMK-X	Runway Mounting Bracket Kit

NOTE: For color, replace X with B (Black), W (White).

PART NO.	DESCRIPTION
QSOHR-CRB-X	Cable Management Ring, Kit of (4) 3 in Rings

NOTE: For color, replace X with B (Black), W (White).

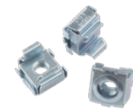
PART NO.	DESCRIPTION
PS-1224CN	Cage Nuts 12-24 Thread, Pack of 50



QSOHR-RMK-B



QSOHR-RMK-B



PS-1224CN

# Standard EIA Racks

## Standard EIA 2-Post & 4-Post Racks

Standard EIA 2 and 4-post racks provide greater flexibility and optimum efficiency in any data center. The 4-post racks provide an economical mounting platform for switches and servers.

PART NO.	TYPE	COLOR	RU	HEIGHT	WIDTH	DEPTH	LOAD RATING (LBS)
19-72-T2SDB	2-Post	Black	38	72 in	20.19 in	3 in	750
19-84-T2SDB		Black	45	84 in		3 in	
19-84-T2SD		Clear	45	84 in		3 in	
19-84-6T2SDB		Black	45	84 in		6 in	
19-96-T2SDB		Black	51	96 in		3 in	
19-96-T2SD		Clear	51	96 in		3 in	
19-84-T4SDA2132*	4-Post Adjustable	Black	45	84 in	21 in - 32 in		
19-96-T4SDA2132		Black	51	96 in			
19-84-SSDA2132*		Black	45	84 in			

NOTE: Clear color indicates coated metal finish.

\*T4SDA2132 has 12-24 tapped mounting rails, SSDA2132 has 3/8" square hole mounting rails



19-84-T4SDA2132



19-84-T2SD

# Wall Mount Cabinets

## Swing-Out Wall Mount Cabinets

PART NO.	HEIGHT	RAIL TYPE	DOOR TYPE	LOAD RATING	DESCRIPTION
SWM12RUPD-26-26	25 in	12 RU	Perforated	125 lbs	Swing-Out Cabinet, 12 RU, Perforated Door
SWM12RUPL-26-26	25 in	12 RU	Plexiglass	125 lbs	Swing-Out Cabinet, 12 RU, Plexiglass Door
SWM12RUSD-26-26	25 in	12 RU	Solid	125 lbs	Swing-Out Cabinet, 12 RU, Solid Door
SWM18RUPD-26-26	35.5 in	18 RU	Perforated	150 lbs	Swing-Out Cabinet, 18 RU, Perforated Door
SWM18RUPL-26-26	35.5 in	18 RU	Plexiglass	150 lbs	Swing-Out Cabinet, 18 RU, Plexiglass Door
SWM18RUSD-26-26	35.5 in	18 RU	Solid	150 lbs	Swing-Out Cabinet, 18 RU, Solid Door
SWM26RUPD-26-26	49.5 in	26 RU	Perforated	200 lbs	Swing-Out Cabinet, 26 RU, Perforated Door
SWM26RUPL-26-26	49.5 in	26 RU	Plexiglass	200 lbs	Swing-Out Cabinet, 26 RU, Plexiglass Door
SWM26RUSD-26-26	49.5 in	26 RU	Solid	200 lbs	Swing-Out Cabinet, 26 RU, Solid Door

SWM26RUSD-26-26



SWM18RUPD-26-26

## Reinforced Swing Out Wall Mount Cabinets

PART NO.	HEIGHT	RAIL TYPE	DOOR TYPE	LOAD RATING	DESCRIPTION
SWMR12RUPD-26-26	25 in	12 RU	Perforated	225 lbs	Swing-Out Cabinet, Reinforced, 12 RU, Perforated Door
SWMR12RUPL-26-26	25 in	12 RU	Plexiglass	225 lbs	Swing-Out Cabinet, Reinforced, 12 RU, Plexiglass Door
SWMR12RUSD-26-26	25 in	12 RU	Solid	225 lbs	Swing-Out Cabinet, Reinforced, 12 RU, Solid Door
SWMR18RUPD-26-26	35.5 in	18 RU	Perforated	325 lbs	Swing-Out Cabinet, Reinforced, 18 RU, Perforated Door
SWMR18RUPL-26-26	35.5 in	18 RU	Plexiglass	325 lbs	Swing-Out Cabinet, Reinforced, 18 RU, Plexiglass Door
SWMR18RUSD-26-26	35.5 in	18 RU	Solid	325 lbs	Swing-Out Cabinet, Reinforced, 18 RU, Solid Door
SWMR26RUPD-26-26	49.5 in	26 RU	Perforated	350 lbs	Swing-Out Cabinet, Reinforced, 26 RU, Perforated Door
SWMR26RUPL-26-26	49.5 in	26 RU	Plexiglass	350 lbs	Swing-Out Cabinet, Reinforced, 26 RU, Plexiglass Door
SWMR26RUSD-26-26	49.5 in	26 RU	Solid	350 lbs	Swing-Out Cabinet, Reinforced, 26 RU, Solid Door



SWM12RUPL-26-26

## Vertical Wall Mount Cabinets

PART NO.	HEIGHT	DEPTH	RAIL TYPE	DOOR TYPE	OPTIONAL RAIL ACCESSORY MOUNTING
VWMFD-4RU-36-B	36 in	12 in	4 RU, Fixed	Full	2RU/4RU Pivoting, 4RU Fixed
VWMFD-8RU-36-B	36 in	18 in	8 RU, Fixed	Full	2RU/4RU Pivoting, 4RU/8RU Fixed
VWMSD-4RU-36-B	36 in	12 in	4 RU, Fixed	Split	2RU/4RU Pivoting, 4RU Fixed
VWMSD-4RU-42-B	42 in	12 in	4 RU, Fixed	Split	2RU/4RU Pivoting, 4RU Fixed
VWMSD-8RU-36-B	36 in	18 in	8 RU, Fixed	Split	2RU/4RU Pivoting, 4RU/8RU Fixed
VWMSD-8RU-42-B	42 in	18 in	8 RU, Fixed	Split	2RU/4RU Pivoting, 4RU/8RU Fixed



VWMFD-8RU-36-B

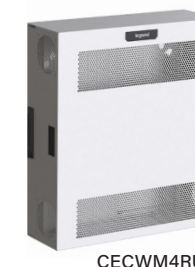
# Wall Mount Cabinets

## Compact Edge Cabinets

The Compact Edge Cabinet (CEC) series wall-mount cabinet offer a unique versatile solution for edge computing, purpose built for equipment and application advancements all in a small form factor. The low-profile design positions rack mount equipment vertically, while allowing access for upgrades, refreshes and adds/drops. When opened the back-pan equipment and connectivity remain in place while the enclosure swings out maximizing accessibility and management. The CEC series cabinet is capable of housing a complete network, including up to 4RU of traditional rack mount equipment, power, thermal management and connectivity. Deploy the cabinet for a low-profile, edge solution that can support any application.



CECWM4RUPL-M



CECWM4RUPD-W

### Features:

- Wide Open Access: When opened the back-pan, equipment, and connectivity remain in place – While the enclosure swings out allowing unfettered accessibility and management.
- PCI Compliance: User access is controlled by an integrated swing handle with lock.
- Vertical Rack Mount: Enables low-profile mounting allowing for easy installation, access, and maintenance.
- Maximizing Space: Two pairs of 4 RU rails are supplied to mount a variety of network equipment, auxiliary equipment, power and panel. One Pivoting Panel Mounting Bracket Kit has been supplied to free up vertical space and improve access to the rear of installed patch panels. (Additional kits sold separately - CECPM1RU)



CECWM4RUSD-B

PART NO.	HEIGHT	RAIL TYPE	DOOR TYPE	LOAD RATING	DESCRIPTION
CECWM4RUPD-X	26.4 in	4 RU	Perforated	135 lbs**	Compact Edge Cabinet, 4 RU, Perforated Door
CECWM4RUPL-X			Plexiglass		Compact Edge Cabinet, 4 RU, Plexiglass Door
CECWM4RUSD-X			Solid		Compact Edge Cabinet, 4 RU, Solid Door

NOTE: Replace X with M (Magnesium), B (Black), W (White)  
Load Rating is 135lbs total (125 per pair mounting rails and 10lbs on the door)

PART NO.	HEIGHT
CECPM1RU-M	Pivoting Panel Mount Bracket Kit

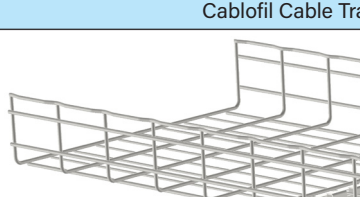


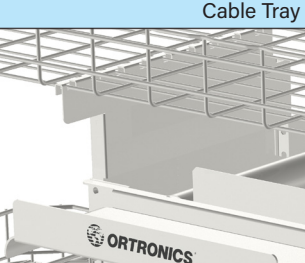
CECPM1RU-M

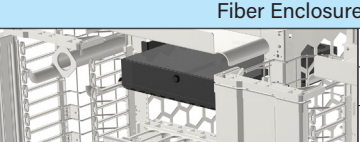


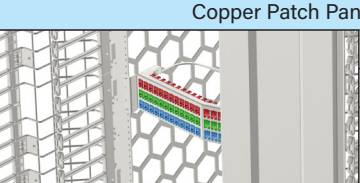
# MIGHTY MO<sup>®</sup> 20 CABLE MANAGEMENT SYSTEM

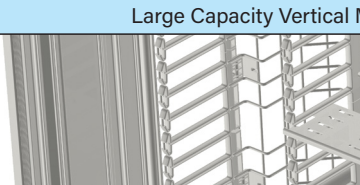
## BUILT FOR THE TELCO ROOM

Cablofil Cable Tray	
	CF105/150
	CF105/300
	CF105/450
	CF105/600

Cable Tray Bracket	
	MM20CTB16-Z
	MM20CTB1624-Z
	MM20CTB30-Z
	MM20CTBH16-Z
	MM20CTBH1624-Z
	MM20CTB30-Z

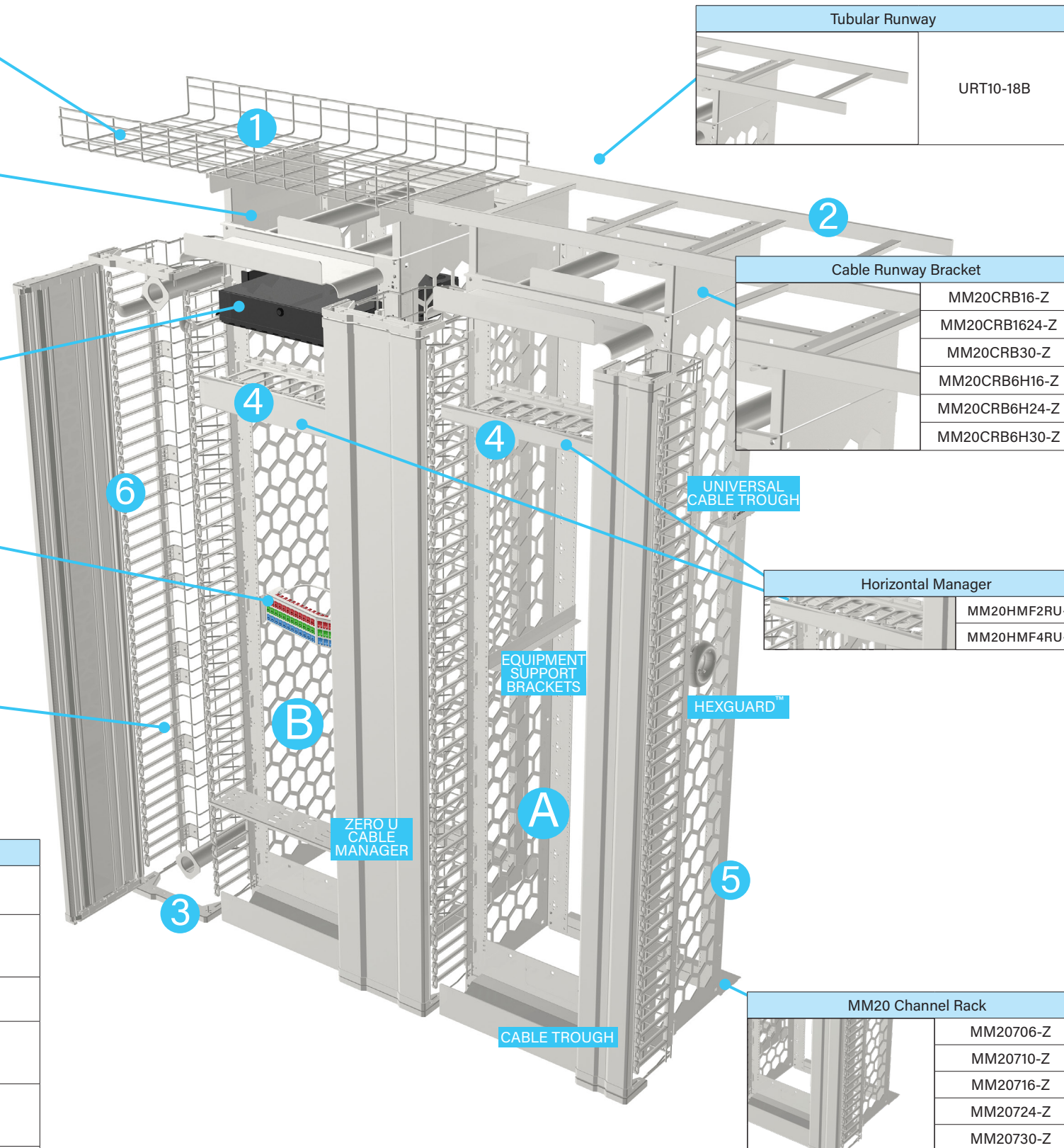
Fiber Enclosure	
	INFC01U-M4-E
	INFC02U-M4-E
	INFC04U-M4-E

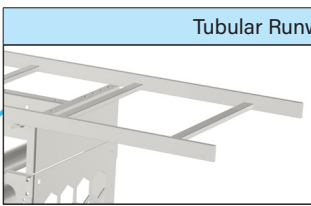
Copper Patch Panels	
	PHDHJU24
	PSDHJU48-W
	PHAHJU48
	PHAHJU72-W

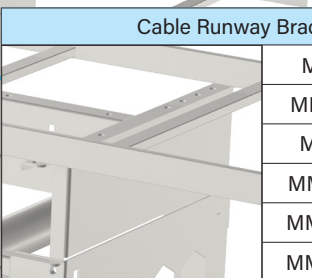
Large Capacity Vertical Managers	
	MM20VMD706-Z
	MM20VMD710-Z
	MM20VMD712-Z
	MM20VMD716-Z

MM20 Solutions for the Telco Room			
Part Numbers	Rack Location	Recommended Usage	Options
MM20716-Z	Rack A	Fiber Box Patch Panels Equipment < 18.5"	STD
MM20706-Z	Rack A	Patch Panels Cable Management	STD
MM20716-Z	Rack B	Fiber Box Patch Panels Equipment < 18.5"	STD
MM20730-Z	Rack B	Network Switches Network Servers Equipment > 18.5"	STD
MM20730-Z	Rack B	Sidebreathing Equipment > 18.5"	Lightweight Baffles Vertical Manager > 12"

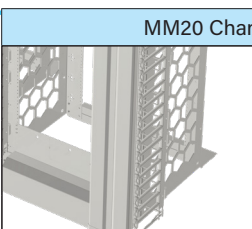
Note: Replace "Z" Color suffix in part numbers with "W" (WHITE) or "B" (BLACK)



Tubular Runway	
	URT10-18B

Cable Runway Bracket	
	MM20CRB16-Z
	MM20CRB1624-Z
	MM20CRB30-Z
	MM20CRB6H16-Z
	MM20CRB6H24-Z
	MM20CRB6H30-Z

Horizontal Manager	
	MM20HMF2RU-Z
	MM20HMF4RU-Z

MM20 Channel Rack	
	MM20706-Z
	MM20710-Z
	MM20716-Z
	MM20724-Z
	MM20730-Z

### CABLE FILL RATES BASED ON MAXIMUM RECOMMENDED 60% FILL

1 Cablofil Cable Tray Fill Rate					
Part Number	Width	Cat 5e .215 dia	Cat 6 .230 dia	Cat 6a .290 dia	Cat 6e .22 dia
CF105/150	6"	176	150	96	176
CF105/300	12"	352	300	192	352
CF105/450	18"	539	460	288	528
CF105/600	24"	715	610	384	704

2 Tubular Runway Fill Rate					
Part Number	Width	Cat 5e .215 dia	Cat 6 .230 dia	Cat 6a .290 dia	Cat 6e .22 dia
URT10-18	18"	96	90	35	94

3 Mighty Mo 20 Vertical Manager Fill Rate					
Part Number	Width	Cat 5e .215 dia	Cat 6 .230 dia	Cat 6a .290 dia	Cat 6e .22 dia
MM20VMD706	6"	255	216	142	245
MM20VMD710	10"	689	583	365	635
MM20VMD712	12"	819	719	443	780
MM20VMD716	16"	1229	1053	651	1164

4 Horizontal Manager Fill Rate						
Part Number	Size	Location	Cat 5e .215 dia	Cat 6 .230 dia	Cat 6a .290 dia	Cat 6e .22 dia
DHMC1RU	1RU	Front	12	12	9	12
DHMC1RU	1RU	Rear	18	13	7	17
DHMC2RU	2RU	Front	78	72	36	72
DHMC2RU	2RU	Rear	68	58	38	60

5 Mighty Mo 20 Channel Rack Fill Rate					
Part Number	Size	Cat 5e .215 dia	Cat 6 .230 dia	Cat 6a .290 dia	Cat 6e .22 dia
MM20706	6.5" depth	119	112	60	119
MM20710	10" depth	196	182	105	189
MM20716	16.25" depth	308	287	165	301
MM20724	24" depth	462	427	245	448
MM20730	30" depth	581	539	305	567

6 Mighty Mo 20 Vertical Manager Single RU Fingers					
Part Number	Size	Cat 5e .215 dia	Cat 6 .230 dia	Cat 6a .290 dia	Cat 6e .22 dia
N/A	1RU	56	39	22	42



**Data Communications**  
60 Woodlawn Street  
West Hartford, CT 06110  
800.934.5432  
legrand.us