

# EVOLVE

Enabling resilient, secure and sustainable IT infrastructure

Schneider Electric's comprehensive DCIM solution, EcoStruxure™ IT, modernizes the monitoring and management of complex, hybrid IT infrastructure.

[ecostruxureit.com](https://ecostruxureit.com)



Life Is On

**Schneider**  
Electric



# Table of contents

## EcoStruxure™ IT and DCIM 3.0 overview

1

What is EcoStruxure IT and this new wave of DCIM?

## What does DCIM 3.0 mean for you?

2

Enterprise, Colo and Solution Providers all have different DCIM needs.

## EcoStruxure IT capabilities

3

Secure monitoring, management, insights, planning, and modeling.

## EcoStruxure IT solutions

4

Making your IT infrastructure resilient, secure, and sustainable.

## Contact sales

5

Interested in learning more about DCIM 3.0 and EcoStruxure IT?

## Start a free 30-day trial

6

Get started now with a free 30-day trial of EcoStruxure IT Expert.





# EcoStruxure™ IT and DCIM 3.0 overview



# EcoStruxure™ IT

## Comprehensive Data Center Infrastructure Management (DCIM) solutions

- **Ensures business continuity** by enabling secure monitoring, management, insights, planning, and modeling whether from a single IT rack to hyper-scale IT, on premises, in the cloud and at the edge.
- **Evolves DCIM** from individual data centers to cover full, hybrid IT environments.
- Addresses industry requirements for a **more resilient, secure, and sustainable IT infrastructure**.
- Features **custom solutions team** comprised of skilled engineers who speak 24 languages and perform customer integrations everywhere in the world.



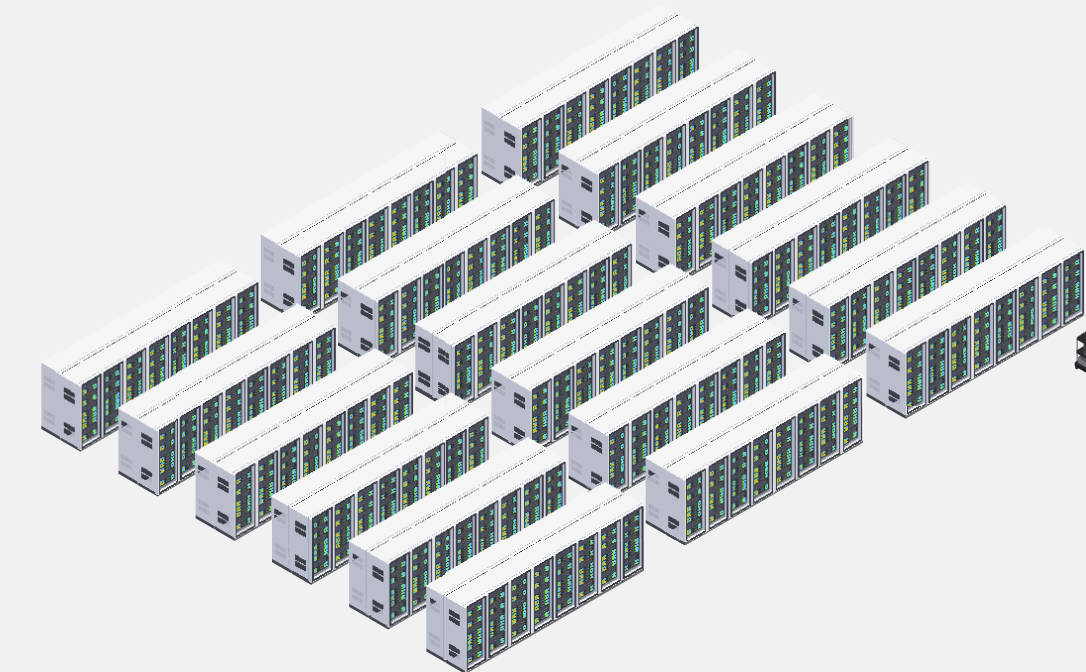
In 60 seconds, learn how EcoStruxure IT addresses the challenges of DCIM 3.0 by modernizing the software portfolio for monitoring and management of sprawling, hybrid IT infrastructure, which has become increasingly complex.



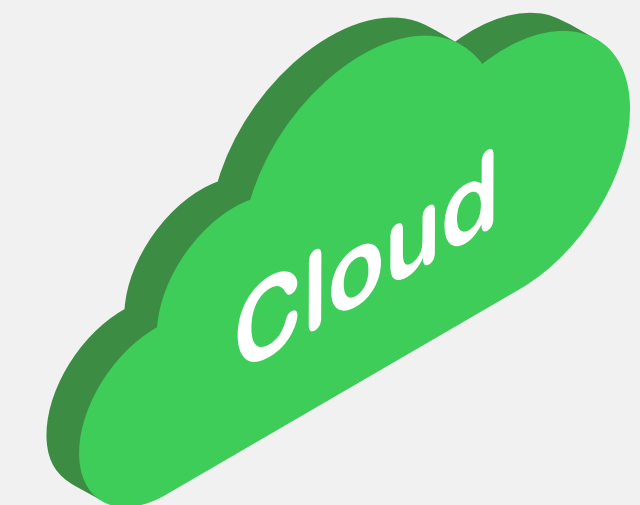
# No clear boundaries to the data center

"The traditional four walls and ceiling no longer contain the datacenter. **The logical data center construct now extends to cloud providers, colocation facilities, edge devices, and edge computing.** Today's data center exists without clear boundaries, creating growing complexity. The new hybrid data computing environment is now much harder to operate as performance, reliability, compliance and security are all more difficult to manage."

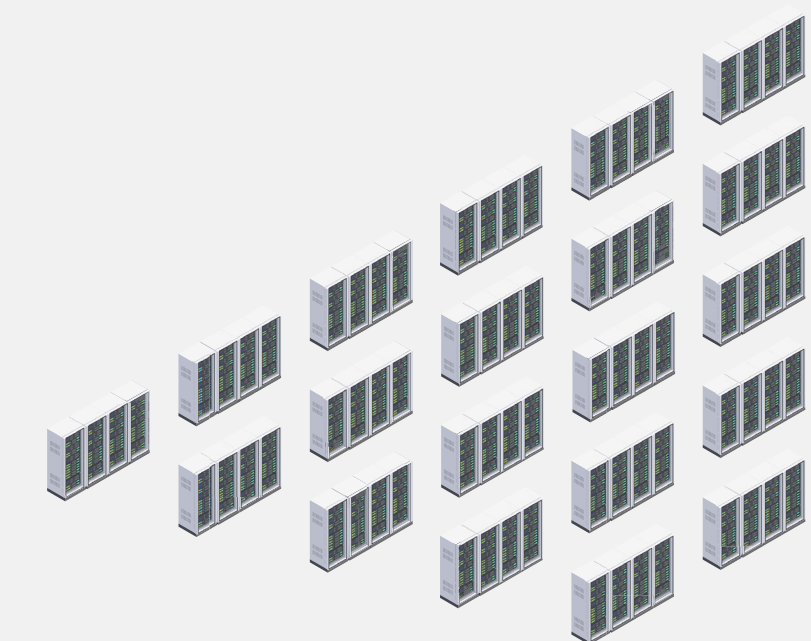
[Source: CIO.com, Don't get left behind. Dramatic change is impacting datacenters and people.](#)



Centralized Data Center



Colo

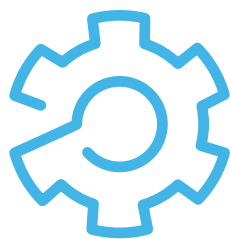


Edge



# The DCIM 3.0 challenge:

Make the hybrid IT environment more resilient, secure and sustainable



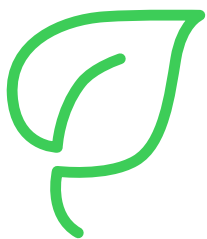
## Resilient

Distributed, hybrid IT environments make it more challenging to maintain resiliency.



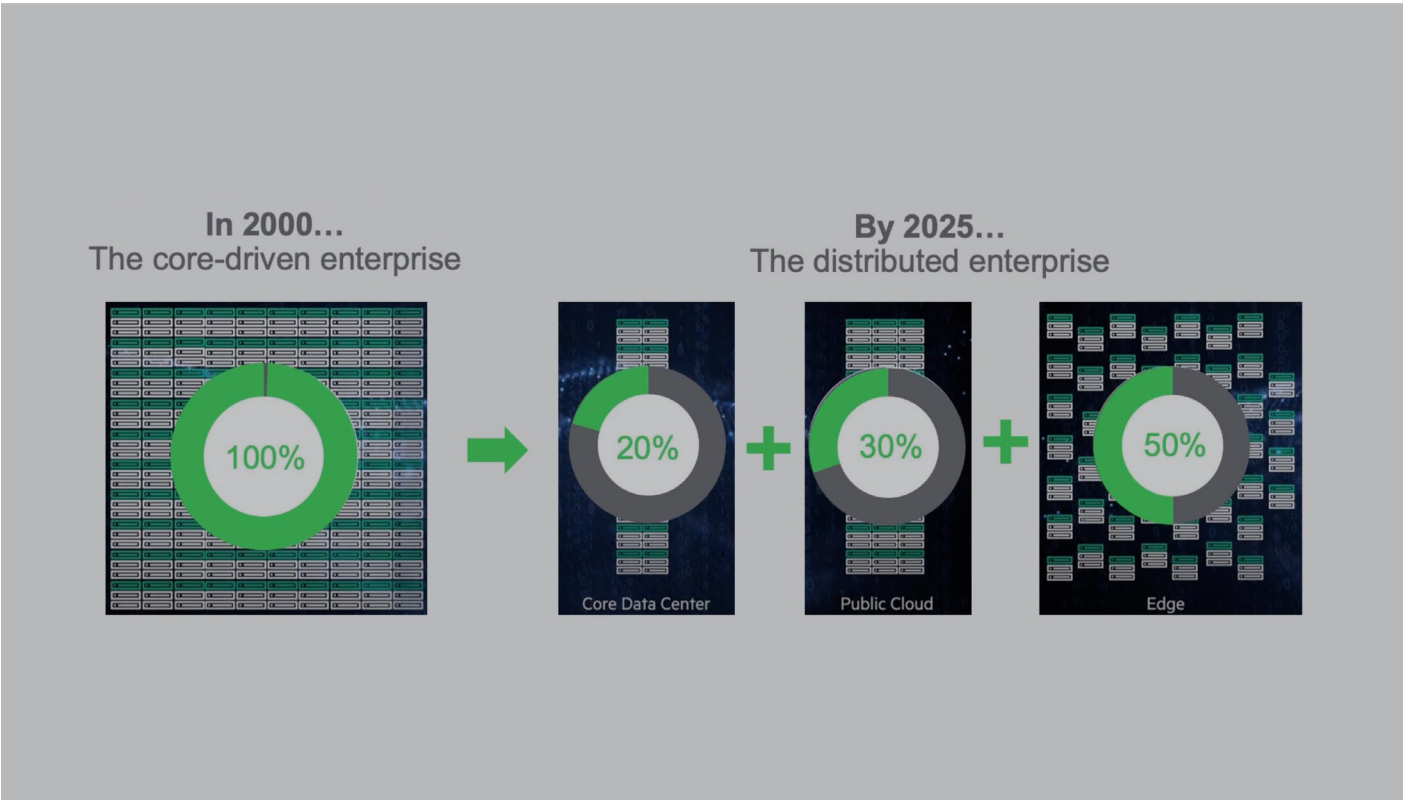
## Secure

Managing at scale and security are the top concerns for distributed IT environments.



## Sustainable

Data center operators are increasingly under pressure to deliver more sustainable operations.



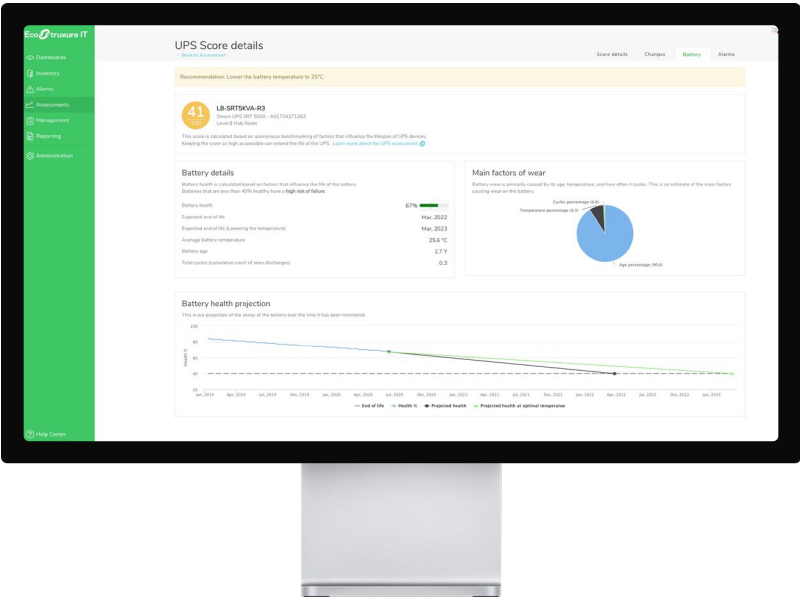
Today's data center operators have continued focus on providing 100% uptime, protecting their attack surface from cybersecurity threats, and delivering more sustainable operations.





# Resilient

EcoStruxure IT enhances resiliency by reducing vulnerability to unplanned downtime

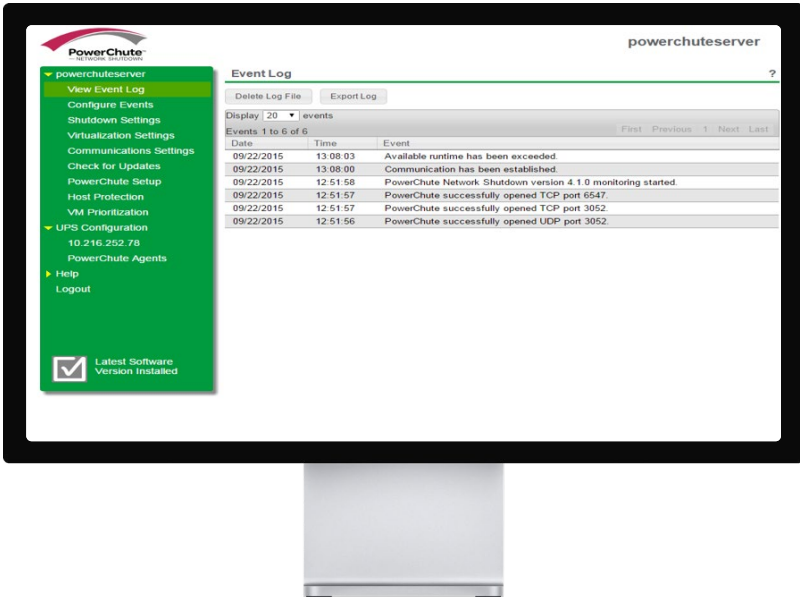


IT Expert

Cloud-based software

Proactive device monitoring, management and health assessments.

[Learn more](#)

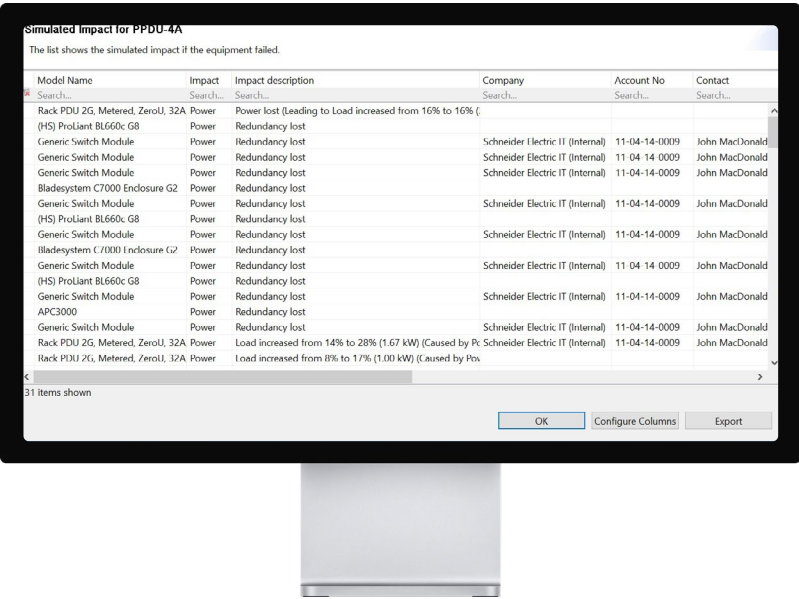


PowerChute

On-prem software

IT-integrated alarms manage and proactively protect server and hyperconverged infrastructures.

[Learn more](#)



IT Advisor

On-prem & Cloud-based software

Run simulated impacts to expose vulnerabilities and address them.

[Learn more](#)



**Sky**, a UK-based multi-media company, has reduced risk of downtime through improved change management planning and impact analysis.



# Secure

EcoStruxure IT provides continuous monitoring to ensure a secure environment



**NetBotz**

Appliances, Cameras, Sensors

Monitor environmental conditions to reduce physical threats.

[Learn more](#)



Lock down racks with access control using permission-based entry and tracking with audit trail to protect IT assets.



Enable surveillance and recording with ability to retain recordings for compliance of critical infrastructure.

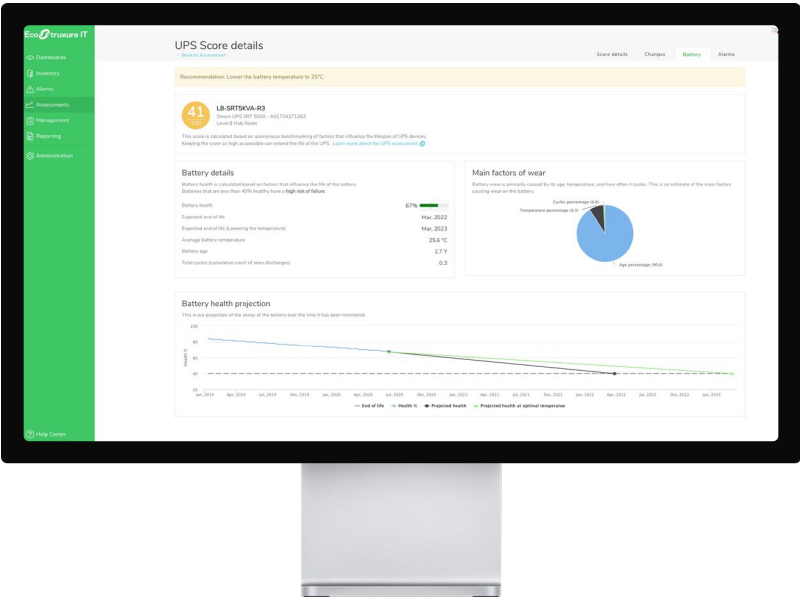


**Leading Edge Data Centres** is creating a network to bring reliable connectivity to regional Australia. It's not easy, but remote monitoring with EcoStruxure helps the company rise to the challenge.





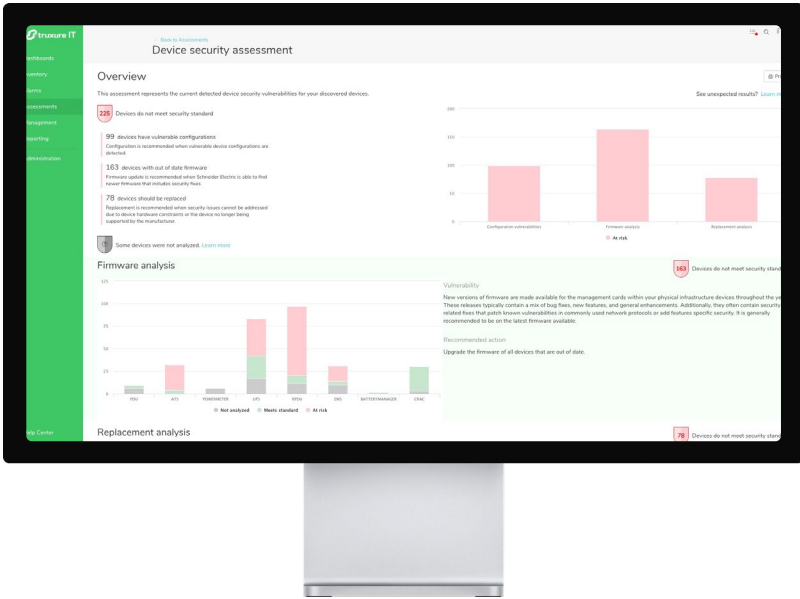
EcoStruxure IT maintains device security policies for a secure environment.



IT Expert & Data Center Expert  
On-prem & Cloud-based software

Perform mass device  
firmware updates to keep  
from running outdated  
firmware.

[Learn more](#)



IT Expert  
Cloud-based software

Conduct cybersecurity  
assessments of physical  
infrastructure.

[Learn more](#)

Cybersecurity  
tops the list of business  
concerns.

#1

ranking for cybersecurity in 2022  
on Allianz Risk Barometer.

[Source: Allianz](#)



**BW Offshore**, a leading provider of floating production  
services and development of proven hydrocarbon  
reservoirs, now has “full control of all UPSs around the  
globe.” [Read story](#)



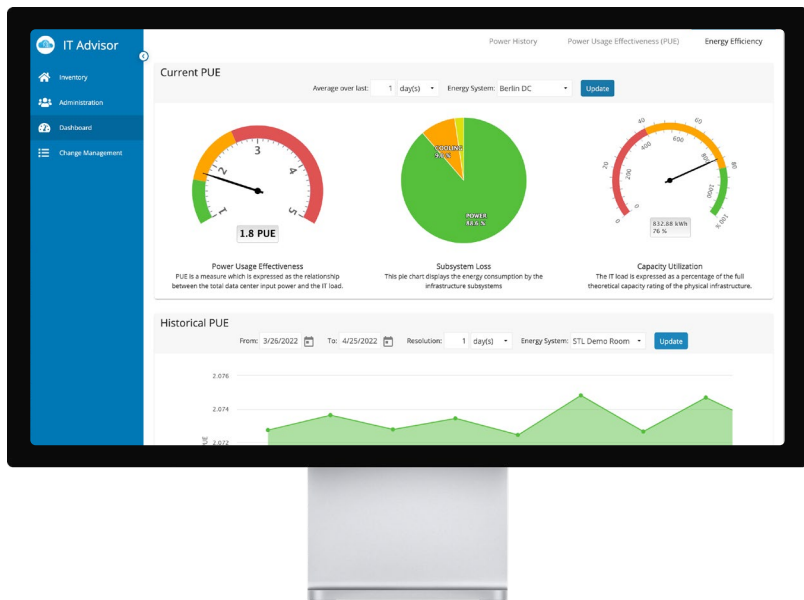
# Sustainable

EcoStruxure™ IT provides dashboards and reports for improved transparency

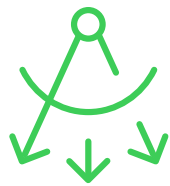


## Better Visibility

- Track PUE, energy and carbon
- Measure energy efficiency down to sub-system level
- We deliver both standard and customized reports and dashboards



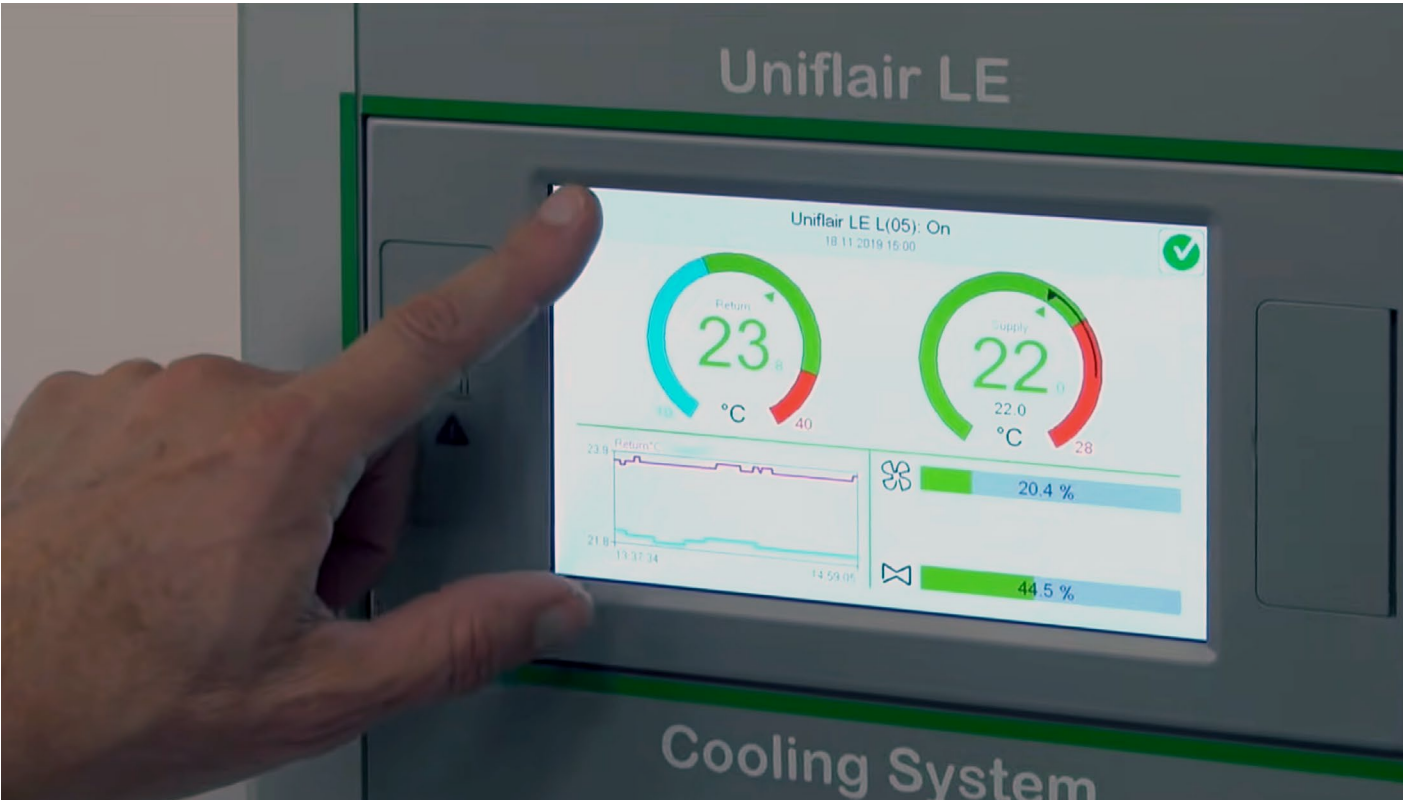
**IT Advisor**  
On-prem & Cloud-based software  
[Learn more](#)



SUSTAINABILITY  
DEVELOPMENT  
GOALS



CIRCULAR  
ECONOMY



Custom dashboards and reports help **EcoDataCenter** become Sweden's MOST sustainable data center with PUE of 1.15.



# What does DCIM 3.0 mean for you?



# EcoStruxure™ IT addresses customer problems:



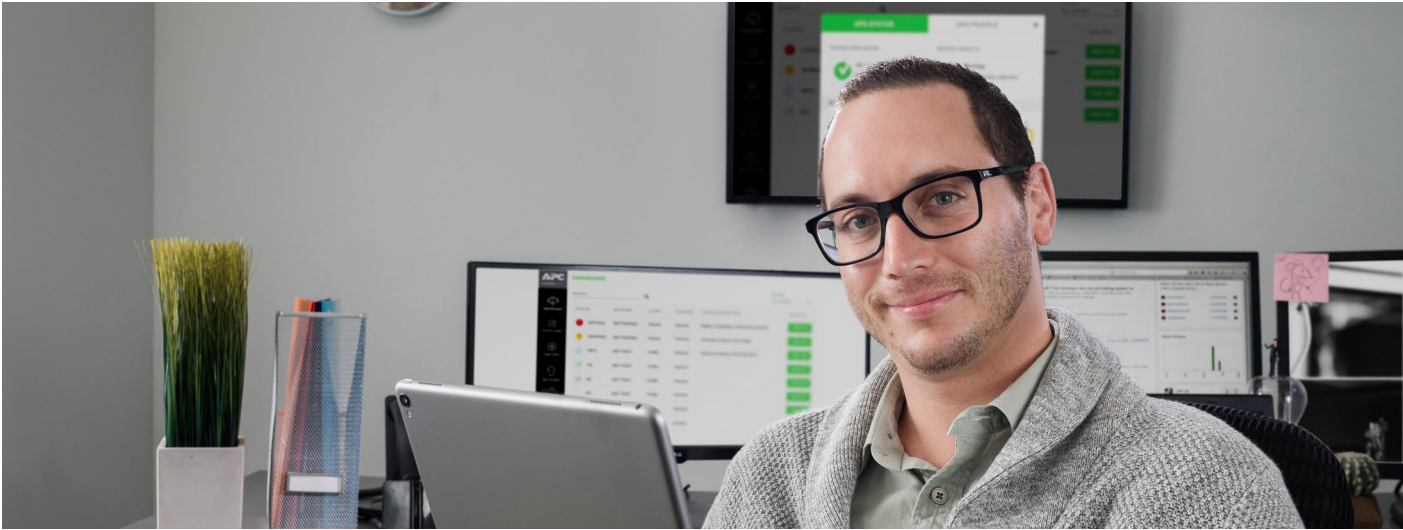
## Enterprise

Redefine how you monitor and manage your complex hybrid IT infrastructure — on-premise, in the cloud, and at the edge.



## Colo

Support your data centers growth, protect from cybersecurity threats and deliver more sustainable operations.



## Solution Provider

Grow your business and expand Managed Power Services making your customers' hybrid and distributed IT infrastructure resilient, secure and sustainable.



ENTERPRISE

# The need for an enhanced DCIM solution

- Increasing complexity due to rising number of distributed/ hybrid IT environments on-premise, in colocation, cloud and at the edge
- Lack of onsite staff
- Need for visibility across the many geographically dispersed sites and assets – impacting operations, speed and security
- Increasing physical and cyber vulnerabilities and attacks
- Growing focus on sustainability



## COLO DATA CENTERS

# The need for an enhanced DCIM solution

- Manage IT space for large to hyperscale data centers serving multiple tenants
- Maximize resource utilization and colocation scalability
- Maintain transparency on meeting SLAs and provide real-time visibility
- Satisfy tenant requirements for security and sustainability, including reporting and billing

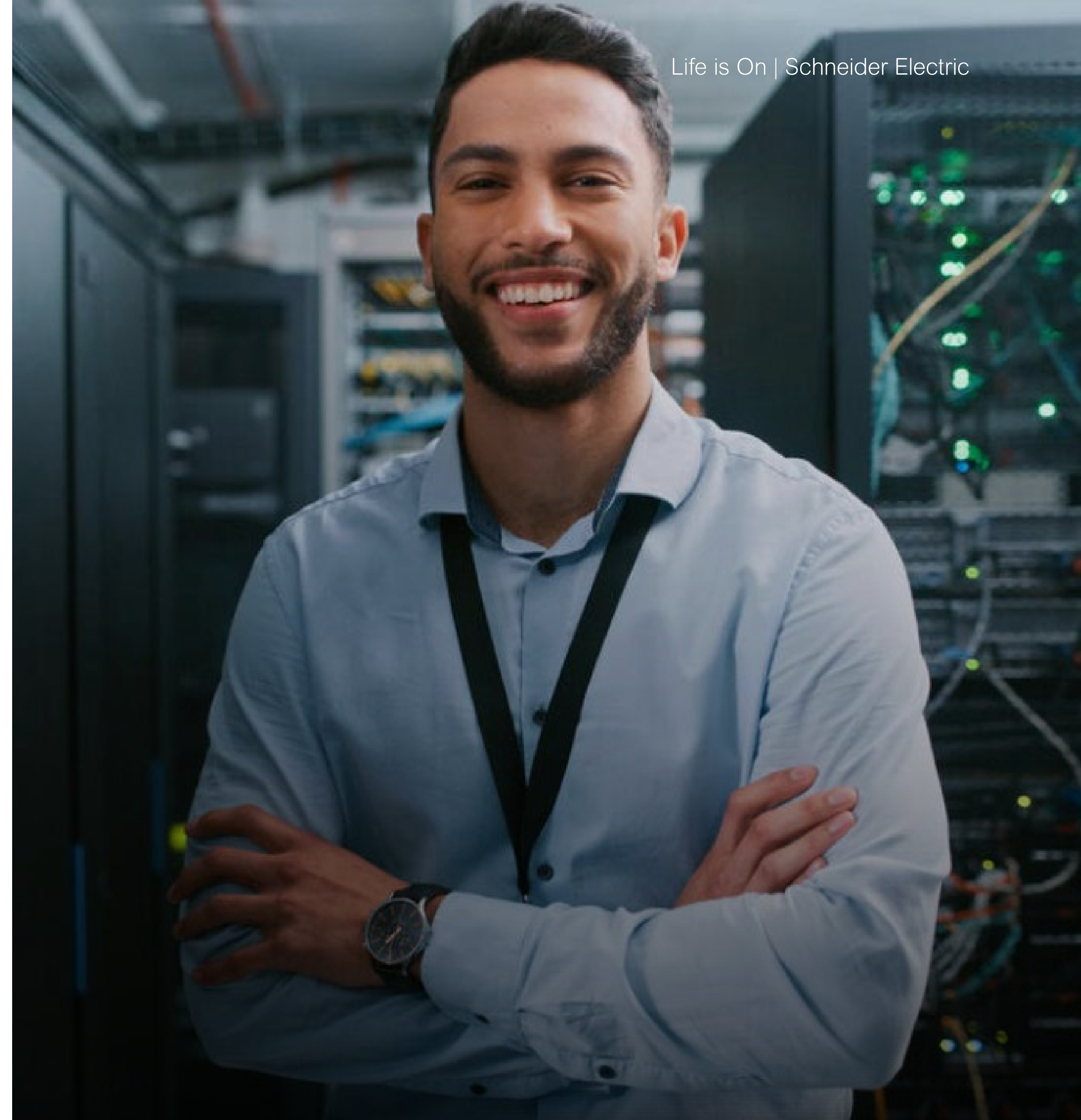




## IT SOLUTION PROVIDERS

# The need for an enhanced DCIM solution

- Be the trusted advisor maximizing resources, operational efficiency and sustainability targets
- Keep customers protected from environmental and cyber threats
- Grow business, generate recurrent revenue and build managed power service





# Make your IT infrastructure...



## Resilient

**Improve uptime, reliability, predictability and peace-of-mind, reducing risks and costs.**

- Real-time visibility across sites through remote monitoring and management
- Foresee potential risks leveraging analytics and insights with data-driven recommendations
- Flexibility with custom solutions and dashboards
- Integration with 3rd party platforms
- Cloud reliability and simplicity
- Optimize capacity, energy, space and asset utilization by agile design, simulation, planning and modeling before implementing changes in your IT infrastructure



## Secure

**Stay protected from environmental and cyber threats.**

- Protect your IT infrastructure with physical surveillance including cameras and sensors
- Keep latest firmware updated
- Cybersecurity assessment
- Standard ISO certification



## Sustainable

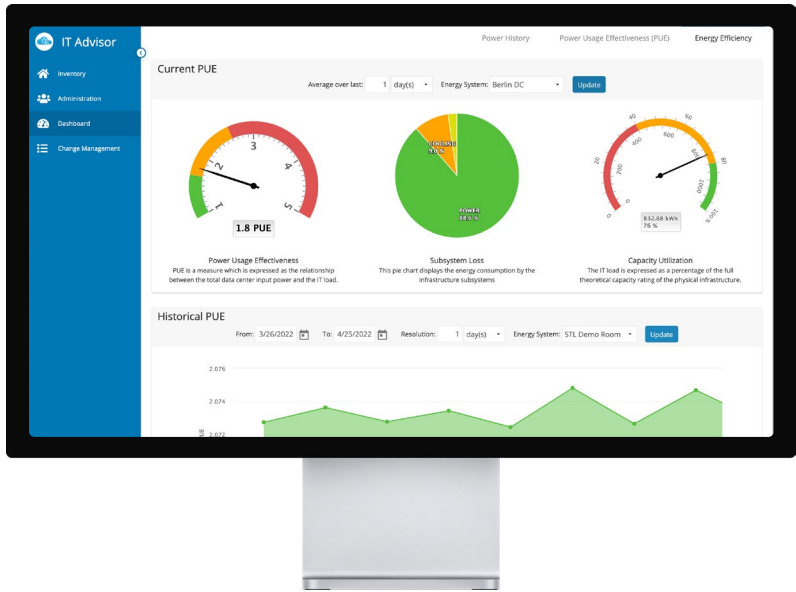
**Maximize resource utilization, operational efficiency and achieve sustainability targets.**

- Optimize capacity, energy, space and asset utilization
- Avoid unnecessary trips onsite
- Plan, analyze and simulate changes to understand the impact on your data center to optimize energy utilization
- Provide SLA tenant transparency, reporting and real-time visibility through Tenant Portal



# Schneider Electric's DCIM solution

EcoStruxure™ IT, ensures business continuity by enabling secure and simple monitoring, management, insights, planning, and modeling whether from a single IT rack to hyper-scale IT — on premises, in the cloud, at the edge.



- ✓ Transforms and simplifies how to remotely monitor and manage your IT infrastructure at scale as well as design, plan and model data centers
- ✓ Make data driven decisions leveraging data points stored in the EcoStruxure data lake, anonymized and analyzed
- ✓ Supports sustainable targets and reporting
- ✓ Helps you stay protected and connected

**Additionally, as an IT Solution Provider, you can:**

- ✓ Grow business with comprehensive and expanded DCIM software portfolio
- ✓ Expand capabilities and business with managed power services – DCIM AAS
- ✓ Gain recurrent revenue and future-proof your business



# EcoStruxure™ IT capabilities





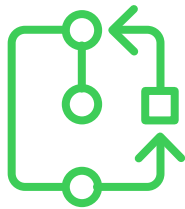
# Capabilities

The vendor-neutral capabilities enabled by EcoStruxure™ IT solves customer challenges



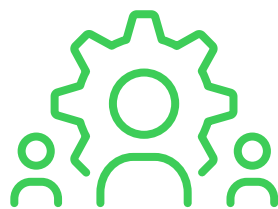
## Monitoring and Management

Device management for power and cooling devices; physical security and environmental security monitoring; OpEX and downtime reduction; real-time insight into your IT infrastructure.



## Planning and Modeling

Design for the future by gaining full visibility into a data center or colocation infrastructure, asset tracking, simulation and change management for over 4000 devices.



## Custom Solutions and Integrations

Tailored solutions to address unique customer requirements through automated reporting, dashboards, migrations, and custom integrations with EcoStruxure IT and third-party systems or software.

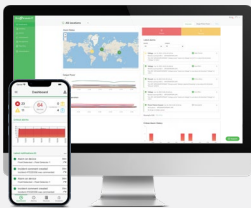


# What does EcoStruxure™ IT offer?



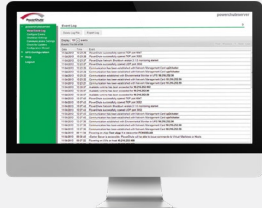
## Monitoring & Management

Monitoring and management  
for power and cooling



**IT Expert &  
Data Center Expert**  
Cloud-based and on-premises

Power protection for  
Server/HCI



**PowerChute**  
On-prem software

Physical security  
and monitoring



**NetBotz**  
Appliances, Cameras  
and Sensors



Power



Cooling



Environment  
& Security

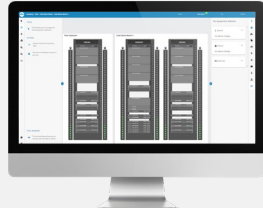


VM  
Protection



## Planning & Modeling

Planning, modeling, and optimization  
of critical IT infrastructure



**IT Advisor**  
On-premises and cloud-based  
software



Visualization



Tracking



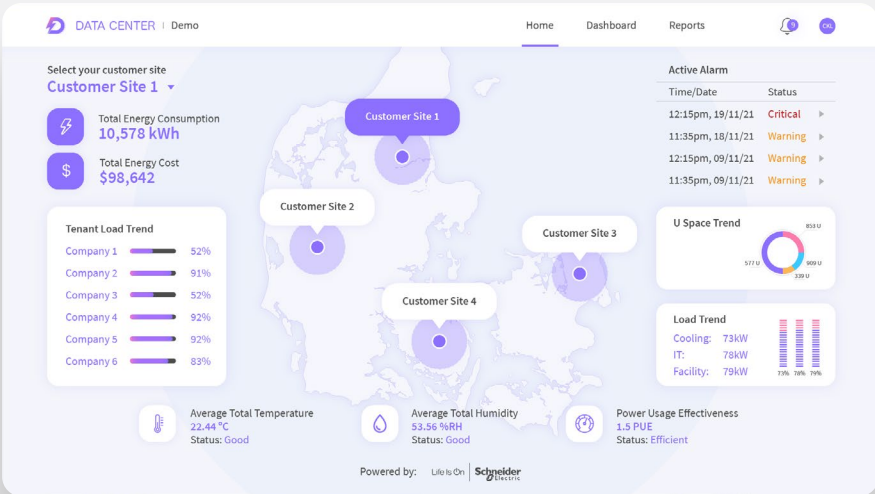
Simulation



Tenant  
Portal



## Custom Solutions & Integrations



Automated  
Reports



Custom  
Dashboards



3rd Party  
Integrations



Customized  
Software



# EcoStruxure™ IT solutions



# EcoStruxure™ IT Expert

Monitor and manage your IT sites remotely



Cloud-Based

Advanced remote monitoring for wherever-you-go visibility and alarms, predictive maintenance, and data-driven recommendations to mitigate security and failure risks of your data center and distributed IT infrastructure.

Helps IT Managers:

- Gain visibility and management of remote sites where no onsite staff are present
- Use data to support future infrastructure requests and make strategic decisions
- Access reports for an instant overview of the most important information, anywhere, anytime



**Tanishq Jewelry** is upgrading its retail IT infrastructure with edge computing solutions like Schneider Electric Micro Data Centers and using EcoStruxure IT for simplified remote monitoring and management.

Explore the  
EcoStruxure IT  
Solutions:

Monitoring and  
Management

- ▶ EcoStruxure IT Expert
- Data Center Expert
- NetBotz
- PowerChute

Planning and Modeling

- EcoStruxure IT Advisor

Custom Solutions

- Dashboards
- Reports
- Integrations
- Migrations
- Custom features



# Data Center Expert

Monitor and manage your data center on-premises



On-Premises

Efficient on-premises data center power, cooling, security, and environmental monitoring that gives you the reports, graphs, instant fault notification and escalation you need to quickly resolve events and ensure the high availability of your critical infrastructure.

## Helps Data Center Managers:

- Maintain environmental integrity - decreasing the data center carbon footprint and power consumption
- Provide real time monitoring and reporting
- Gain visibility into the IT infrastructure for proactive maintenance
- Simultaneously upgrade firmware for multiple APC devices



**Cavern Technologies** partnered with Schneider Electric for data center management solutions for their colocation customers. This remote monitoring system is key when providing enterprise-class data centers for customers.

Explore the  
EcoStruxure IT  
Solutions:

## Monitoring and Management

- EcoStruxure IT Expert
- ▶ Data Center Expert
- NetBotz
- PowerChute

## Planning and Modeling

- EcoStruxure IT Advisor

## Custom Solutions

- Dashboards
- Reports
- Integrations
- Migrations
- Custom features



# NetBotz

Monitor your data center and local IT sites for physical threats

The industry’s most comprehensive solution of security and environmental appliances to ensure your IT assets are protected against environmental or human physical threats.

Helps Data Center and IT Managers:

- Avoid downtime due to human error
- Maintain environmental integrity and security of remote sites and controlling site access
- Keep up to date with regulatory and compliance requirements



Cloud-Based



On-Premises



**NetBotz** is the most comprehensive solution for your IT environmental and security monitoring needs. Use the interactive tool to learn how integrated sensing, surveillance, and badged rack-access control can help mitigate risks.

[Learn more](#)

Explore the  
EcoStruxure IT  
Solutions:

Monitoring and  
Management

- EcoStruxure IT Expert
- Data Center Expert
- ▶ NetBotz
- PowerChute

Planning and Modeling

- EcoStruxure IT Advisor

Custom Solutions

- Dashboards
- Reports
- Integrations
- Migrations
- Custom features



# PowerChute™ Network Shutdown

Power protection for server and hyper-converged infrastructures

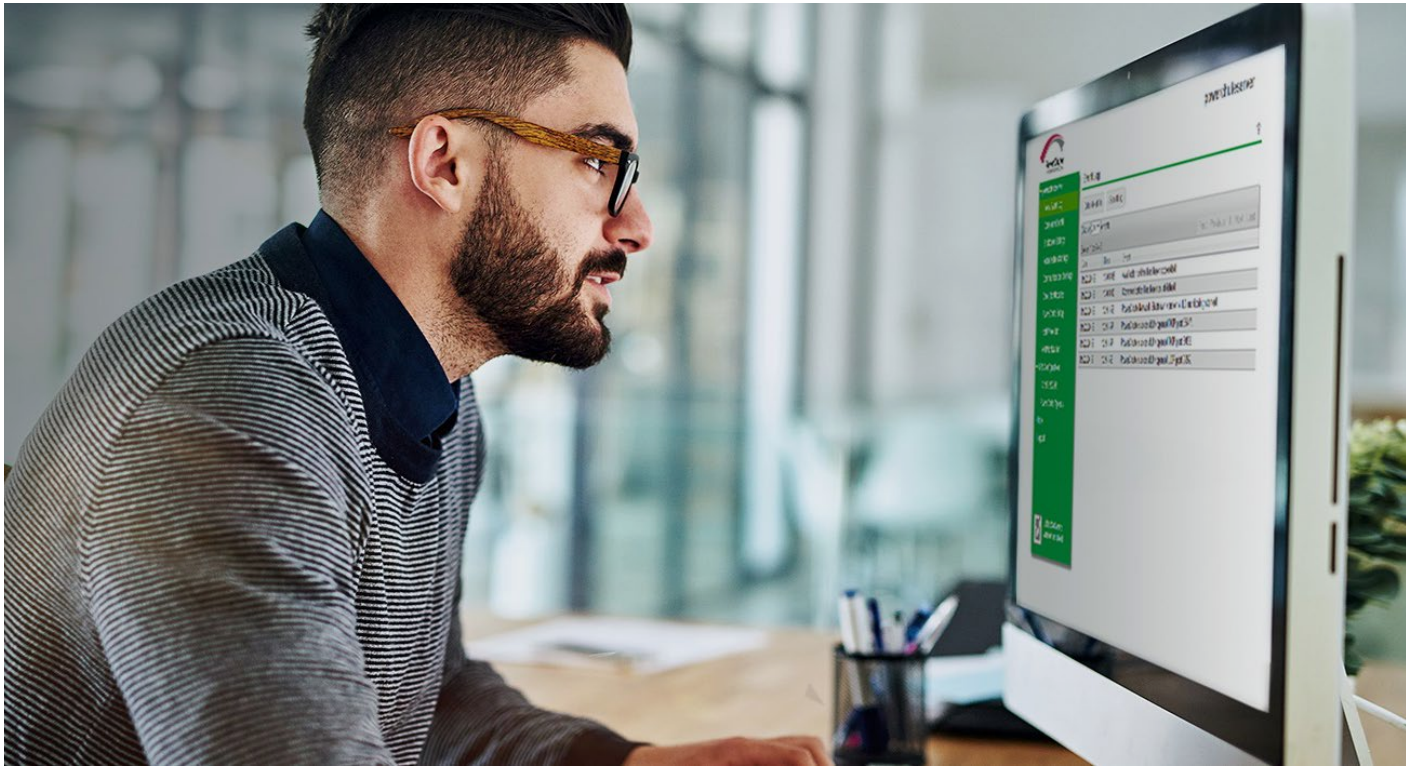


On-Premises

APC PowerChute is a UPS management software enabling graceful system shutdowns and start-up of your IT infrastructure, and providing energy management capabilities.

## Helps IT Managers:

- Improve efficiency at the edge
- Maintain data security and resiliency during prolonged power disturbances
- Integrate with all key hyperconverged infrastructure platforms
- Protect physical and virtual IT environments from threats to IT availability



APC by Schneider Electric **PowerChute Network Shutdown** supports all key Hyperconverged Infrastructure (HCI) leaders. PowerChute v4.5 seamlessly integrates with the Dell VxRail hyperconverged infrastructure systems.

Explore the  
EcoStruxure IT  
Solutions:

## Monitoring and Management

- EcoStruxure IT Expert
- Data Center Expert
- NetBotz
- ▶ PowerChute

## Planning and Modeling

- EcoStruxure IT Advisor

## Custom Solutions

- Dashboards
- Reports
- Integrations
- Migrations
- Custom features





# EcoStruxure™ IT Advisor

Plan, model, and optimize your data center



Cloud-Based



On-Premises

DCIM software for planning, modeling, and optimization of your data center and colocation operations through assets tracking, risk management, and integrations with 3rd party systems, eliminating dependency on complex spreadsheets.

## Helps Data Center Managers:

- Add, move, and change servers confidently
- View overall data center capacity and asset inventory
- Identify opportunities to drive savings and efficiency by monitoring and measuring energy usage
- Access the Tenant Portal in which colocators can share customer specific DCIM information with their customers



Tasked with keeping their customers energized to ensure continuity of critical services like Emergency Medical Services, **Puget Sound Energy (PSE)** relies on the EcoStruxure IT data center infrastructure management solution for comprehensive visibility.

Explore the  
EcoStruxure IT  
Solutions:

## Monitoring and Management

- EcoStruxure IT Expert
- Data Center Expert
- NetBotz
- PowerChute

## Planning and Modeling

► EcoStruxure IT Advisor

## Custom Solutions

- Dashboards
- Reports
- Integrations
- Migrations
- Custom features



# Custom Solutions

Develop solutions and integrations fully tailored to your needs

For your operations, a one-size-fits-all solution is not always what you need. Our team of highly skilled engineers develop custom solutions designed to do exactly what you want it to do to make your day easier: custom dashboards, reports, integrations, migrations, and even custom features. They also use specialized tools and processes to deliver best-in-class migration of data from any 3rd party system.

## Helps Data Center Managers:

- ACS Engine available for custom solutions: reports, dashboards, integrations and features
- Enable cross platform sharing to gain operational insights
- Ensure stable and secure data exchange

## Integrations

Improve your business setup and automate businesses processes by integrating EcoStruxure IT software with relevant enterprise software.

## Personalization

Work with our team to develop custom solutions tailored to your need in the form of reports, dashboards, features and more.

## Maintenance

Enjoy peace of mind of knowing your custom solutions are supported and always running on the latest EcoStruxure IT software.

Explore the  
EcoStruxure IT  
Solutions:

### Monitoring and Management

- EcoStruxure IT Expert
- Data Center Expert
- NetBotz
- PowerChute

### Planning and Modeling

- EcoStruxure IT Advisor

### Custom Solutions

- ▶ Dashboards
- ▶ Reports
- ▶ Integrations
- ▶ Migrations
- ▶ Custom Features



# Contact Sales



## Interested in learning more?

Whether you are looking for monitoring, management, planning, or modeling — on-prem or cloud-based — EcoStruxure™ IT solutions come together for a comprehensive offer giving you a more resilient, secure, and sustainable IT infrastructure!

**Click here to request a representative from your area to contact you to learn more:**





# Start your free 30-day trial of EcoStruxure™ IT Expert

Ready to proactively monitor, manage and optimize your IT equipment at the edge, on-premises and in the cloud with secure, where-ever-you-go access for full visibility and control of your network? Get started now by following these three easy steps:

- ✓ **Create your EcoStruxure IT account**
- ✓ **Download the EcoStruxure IT App**  
Set up the 2-factor authentication for increased account security.
- ✓ **Download the Gateway Software**  
Discover your devices and get insights into your devices right away.

